



MLS 6757242 Lake Home

\$899,000

4,360 sq ft
4 bedrooms
4 baths

29477 Pelican Scenic View Road
Ashby MN 56309

Waterfront: Pelican

Status: Pending

Description:

Beautiful one-level living in this spacious 4 bedroom, 4 bathroom lakefront rambler nestled on 13 secluded acres. Peaceful privacy surrounded by nature-perfect for hunting and watching wildlife right from your own yard. Enjoy peaceful mornings on the front porch and relaxing evenings on the back patio overlooking the water and fire pit area-perfect for entertaining or unwinding. Inside, you'll find a layout with 3 bedrooms on the main level, including a primary suite featuring a walk-in closet and private en-suite bath. The fully finished lower level includes a massive family room, game room, dedicated movie room, and exercise room- offering space for every lifestyle need. Large bar area ideal for gatherings. Outside, the property shines with a heated 2-car attached garage, a 24x36 two-story heated workshop with living space above with heat/AC, and a 30x45 pole shed with electricity. Property includes a sprinkler system that uses the lake water. The roof is just 2 years old, giving peace of mind for years to come. Whether you're seeking tranquility, entertainment space, or room to work and store your toys-this home has it all.

Additional Details:

Year Built	2005
Lot Acres	13
Lot Dimensions	242x389x340x208x120x542x877
Garage Stalls	2
School District	2908
Taxes	\$5,556
Taxes with Assessments	\$5,820
Tax Year	2025

Additional Features:

Basement: Egress Window(s), Finished, Full, Concrete, Storage Space, Walkout **Fuel:** Electric, Propane **Garage:** 2 **Heat:** Forced Air, Fireplace(s), Radiant Floor **Sewer:** Tank with Drainage Field **Water:** Well **Air Conditioning:** Central Air

Driving Directions:

County Road 82 NW, Right on County Road 19 NW, right on Olsons Bay Road, Right on Pelican Scenic View Road



Listed By:
Kg Realty

Affinity Real Estate Inc. participates in the Regional Multiple Listing Service of Minnesota, Inc Broker Reciprocity (sm) program, allowing us to display other broker's listings on our website. All properties are subject to prior sale, change or withdrawal.



Call Affinity Real Estate

218-237-3333

info@affinityrealestate.com



Affinity Real Estate - 600 Park Avenue South - Park Rapids MN 56470



website: www.AffinityRealEstate.com | email: info@affinityrealestate.com | office: 218-237-3333 | fax: 218-237-3377

Affinity
REAL ESTATE INC

\$899,000
MLS 6757242 Lake Home
29477 Pelican Scenic View
Road
Ashby MN 56309



website: www.AffinityRealEstate.com | email: info@affinityrealestate.com | office: 218-237-3333 | fax: 218-237-3377



\$899,000

MLS 6757242 Lake Home
29477 Pelican Scenic View
Road
Ashby MN 56309



website: www.AffinityRealEstate.com | email: info@affinityrealestate.com | office: 218-237-3333 | fax: 218-237-3377

Affinity
REAL ESTATE INC

\$899,000

MLS 6757242 Lake Home
29477 Pelican Scenic View
Road
Ashby MN 56309



website: www.AffinityRealEstate.com | email: info@affinityrealestate.com | office: 218-237-3333 | fax: 218-237-3377

Affinity
REAL ESTATE INC

\$899,000
MLS 6757242 Lake Home
29477 Pelican Scenic View
Road
Ashby MN 56309



website: www.AffinityRealEstate.com | email: info@affinityrealestate.com | office: 218-237-3333 | fax: 218-237-3377



\$899,000
 MLS 6757242 Lake Home
 29477 Pelican Scenic View
 Road
 Ashby MN 56309



website: www.AffinityRealEstate.com | email: info@affinityrealestate.com | office: 218-237-3333 | fax: 218-237-3377



\$899,000
 MLS 6757242 Lake Home
 29477 Pelican Scenic View
 Road
 Ashby MN 56309



website: www.AffinityRealEstate.com | email: info@affinityrealestate.com | office: 218-237-3333 | fax: 218-237-3377

Affinity
REAL ESTATE INC

\$899,000

MLS 6757242 Lake Home
29477 Pelican Scenic View
Road
Ashby MN 56309



website: www.AffinityRealEstate.com | email: info@affinityrealestate.com | office: 218-237-3333 | fax: 218-237-3377

Affinity
REAL ESTATE INC

\$899,000
MLS 6757242 Lake Home
29477 Pelican Scenic View
Road
Ashby MN 56309



website: www.AffinityRealEstate.com | email: info@affinityrealestate.com | office: 218-237-3333 | fax: 218-237-3377



\$899,000
 MLS 6757242 Lake Home
 29477 Pelican Scenic View
 Road
 Ashby MN 56309



website: www.AffinityRealEstate.com | email: info@affinityrealestate.com | office: 218-237-3333 | fax: 218-237-3377

Affinity
REAL ESTATE INC

\$899,000
MLS 6757242 Lake Home
29477 Pelican Scenic View
Road
Ashby MN 56309



website: www.AffinityRealEstate.com | email: info@affinityrealestate.com | office: 218-237-3333 | fax: 218-237-3377

Affinity
REAL ESTATE INC

\$899,000
MLS 6757242 Lake Home
29477 Pelican Scenic View
Road
Ashby MN 56309



website: www.AffinityRealEstate.com | email: info@affinityrealestate.com | office: 218-237-3333 | fax: 218-237-3377

Affinity
REAL ESTATE INC

\$899,000
MLS 6757242 Lake Home
29477 Pelican Scenic View
Road
Ashby MN 56309



website: www.AffinityRealEstate.com | email: info@affinityrealestate.com | office: 218-237-3333 | fax: 218-237-3377

Affinity
REAL ESTATE INC

\$899,000
MLS 6757242 Lake Home
29477 Pelican Scenic View
Road
Ashby MN 56309



website: www.AffinityRealEstate.com | email: info@affinityrealestate.com | office: 218-237-3333 | fax: 218-237-3377

Affinity
REAL ESTATE INC

\$899,000
MLS 6757242 Lake Home
29477 Pelican Scenic View
Road
Ashby MN 56309



website: www.AffinityRealEstate.com | email: info@affinityrealestate.com | office: 218-237-3333 | fax: 218-237-3377

Affinity
REAL ESTATE INC

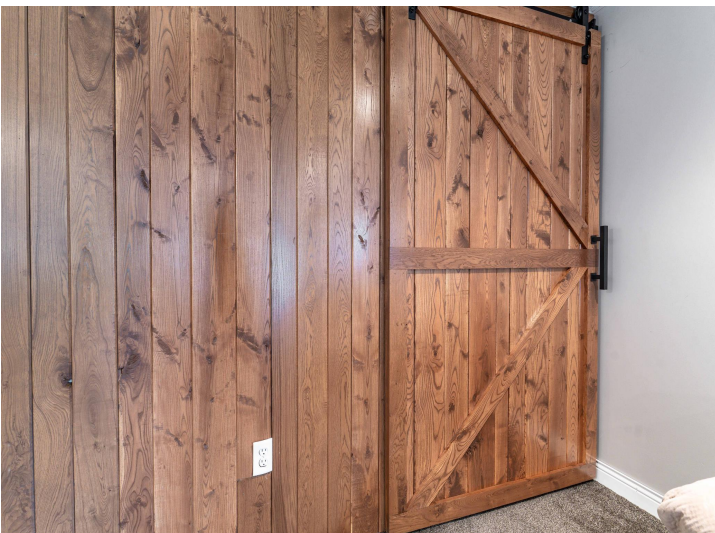
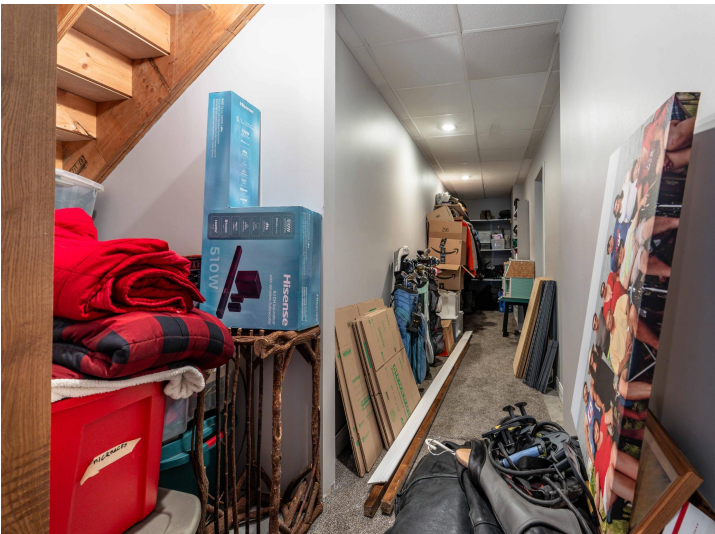
\$899,000
MLS 6757242 Lake Home
29477 Pelican Scenic View
Road
Ashby MN 56309



website: www.AffinityRealEstate.com | email: info@affinityrealestate.com | office: 218-237-3333 | fax: 218-237-3377



\$899,000
 MLS 6757242 Lake Home
 29477 Pelican Scenic View
 Road
 Ashby MN 56309



website: www.AffinityRealEstate.com | email: info@affinityrealestate.com | office: 218-237-3333 | fax: 218-237-3377

Affinity
REAL ESTATE INC

\$899,000
MLS 6757242 Lake Home
29477 Pelican Scenic View
Road
Ashby MN 56309



website: www.AffinityRealEstate.com | email: info@affinityrealestate.com | office: 218-237-3333 | fax: 218-237-3377



\$899,000
 MLS 6757242 Lake Home
 29477 Pelican Scenic View
 Road
 Ashby MN 56309