



MLS 6757406 Lake Home

**\$1,195,000**

3,161 sq ft  
3 bedrooms  
3 baths

33811 Winnamakee Shores Road  
Pequot Lakes MN 56472

Waterfront: Ossawinnamakee

Status: Coming Soon

#### Description:

Experience breathtaking sunset views over beautiful Lake Ossawinnamakee from this well built and meticulously maintained three plus bedroom home. Built by one of the areas finest builders, the home features an open floor plan with a large great room, vaulted ceilings, main floor master suite, 2 field stone fireplaces, a loft with stunning lake views, a 43 ft long lakeside screen porch, a massive lakeside deck with composite decking, a full walk out lower level with in-floor heat, and a three car attached, finished garage with in-floor heat. Tucked amongst a canopy of hardwoods and pines, the peninsula lot offers unique privacy with a true Up-North feel. A matching storage shed, landscaped yard, level elevation to the lake, sand beach blanket and lakeside fire pit cap off this amazing property.

#### Additional Details:

Year Built	2003
Lot Acres	1
Lot Dimensions	120x349x112x493
Garage Stalls	3
School District	186
Taxes	\$4,515
Taxes with Assessments	\$4,742
Tax Year	2025

#### Additional Features:

**Fuel:** Natural Gas **Heat:** Forced Air, Fireplace(s), Radiant Floor

#### Driving Directions:

From Breezy Point, N on county Rd. 11, to N. (Left) on county Rd. 39, to W (left) on Ossawinnamakee Road, to N. (Right) on Winnamakee Shores Road. to sign and property at #33811



Listed By:  
Kurilla Real Estate LTD

Affinity Real Estate Inc. participates in the Regional Multiple Listing Service of Minnesota, Inc Broker Reciprocity (sm) program, allowing us to display other broker's listings on our website. All properties are subject to prior sale, change or withdrawal.



**Call Affinity Real Estate**

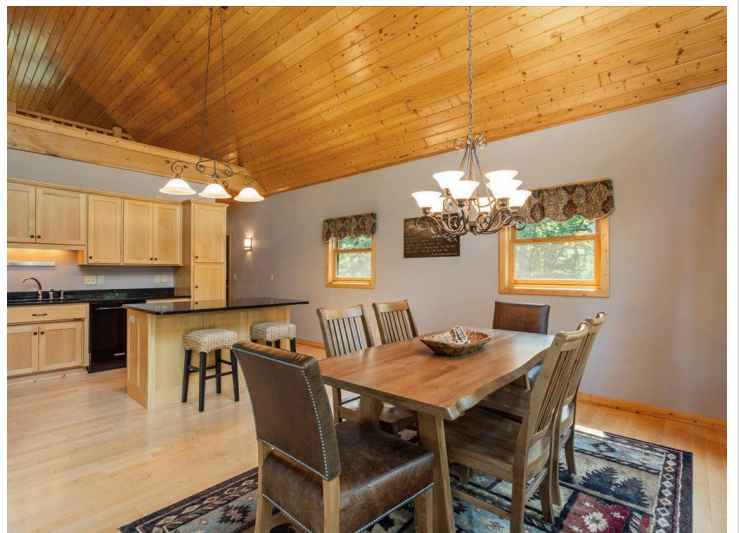
**218-237-3333**

**info@affinityrealestate.com**



**Affinity Real Estate - 600 Park Avenue South - Park Rapids MN 56470**





website: [www.AffinityRealEstate.com](http://www.AffinityRealEstate.com) | email: [info@affinityrealestate.com](mailto:info@affinityrealestate.com) | office: 218-237-3333 | fax: 218-237-3377



**\$1,195,000**  
 MLS 6757406 Lake Home  
 33811 Winnamakee Shores  
 Road  
 Pequot Lakes MN 56472





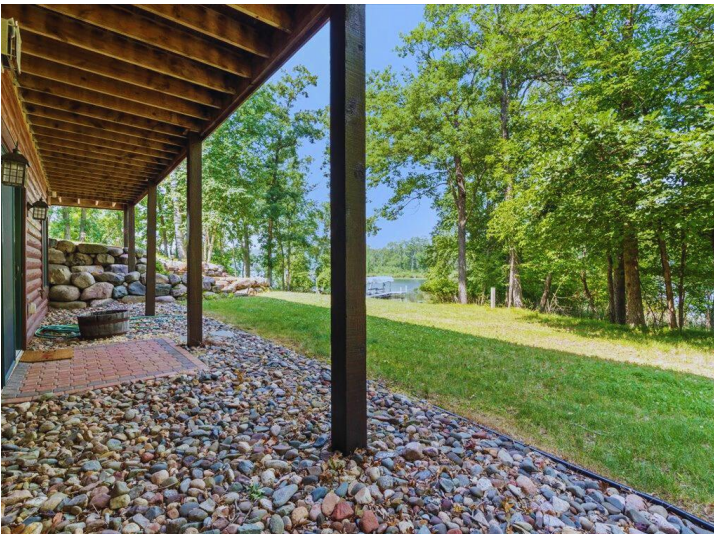
website: [www.AffinityRealEstate.com](http://www.AffinityRealEstate.com) | email: [info@affinityrealestate.com](mailto:info@affinityrealestate.com) | office: 218-237-3333 | fax: 218-237-3377

**Affinity**  
REAL ESTATE INC

**\$1,195,000**

MLS 6757406 Lake Home  
33811 Winnamakee Shores  
Road  
Pequot Lakes MN 56472





website: [www.AffinityRealEstate.com](http://www.AffinityRealEstate.com) | email: [info@affinityrealestate.com](mailto:info@affinityrealestate.com) | office: 218-237-3333 | fax: 218-237-3377



**\$1,195,000**  
 MLS 6757406 Lake Home  
 33811 Winnamakee Shores  
 Road  
 Pequot Lakes MN 56472





website: [www.AffinityRealEstate.com](http://www.AffinityRealEstate.com) | email: [info@affinityrealestate.com](mailto:info@affinityrealestate.com) | office: 218-237-3333 | fax: 218-237-3377

**Affinity**  
REAL ESTATE INC

**\$1,195,000**  
MLS 6757406 Lake Home  
33811 Winnamakee Shores  
Road  
Pequot Lakes MN 56472





website: [www.AffinityRealEstate.com](http://www.AffinityRealEstate.com) | email: [info@affinityrealestate.com](mailto:info@affinityrealestate.com) | office: 218-237-3333 | fax: 218-237-3377

**Affinity**  
REAL ESTATE INC

**\$1,195,000**  
MLS 6757406 Lake Home  
33811 Winnamakee Shores  
Road  
Pequot Lakes MN 56472





website: [www.AffinityRealEstate.com](http://www.AffinityRealEstate.com) | email: [info@affinityrealestate.com](mailto:info@affinityrealestate.com) | office: 218-237-3333 | fax: 218-237-3377



**\$1,195,000**  
MLS 6757406 Lake Home  
33811 Winnamakee Shores  
Road  
Pequot Lakes MN 56472



website: [www.AffinityRealEstate.com](http://www.AffinityRealEstate.com) | email: [info@affinityrealestate.com](mailto:info@affinityrealestate.com) | office: 218-237-3333 | fax: 218-237-3377



**\$1,195,000**

MLS 6757406 Lake Home  
33811 Winnamakee Shores  
Road  
Pequot Lakes MN 56472