



MLS 6757490 Lake Home

\$395,000

1,082 sq ft
2 bedrooms
1 baths

27601 County Road 107
Pequot Lakes MN 56472

Waterfront: East Twin Lake (Pequot
Lakes City)

Status: Pending

Description:

Beautiful East Twin Lake, just north of Nisswa. This property has been in the same family for 5 generations and now is available for sale. The cabin was built on one of the nicest level lots on the lake with 100' of lakefront and 1.95 wooded acres. Features include mature pines, western exposure for sunsets, a hard sand beach and family sized yard. The cabin is old school and includes 2 BRs, lakeside glassed in porch, log sided great room with vaulted ceilings and stone, wood burning FP, 3/4 bath, small kitchen and compliant septic system. Newer 28 x 32 garage, a separate 8x12 building with a cedar wood lined sauna and great location with fine dining, championship golf and close proximity to hiking and biking trail. Spectrum high speed internet and cable available at this address.

There was an electrical fire in the cabin in 2024 which was quickly contained, some remediation is still needed, see supplements for additional information.

Additional Details:

Year Built	1932
Lot Acres	1.95
Lot Dimensions	100x966x80x946
Garage Stalls	3
School District	186
Taxes	\$3,206
Taxes with Assessments	\$3,206
Tax Year	2025

Additional Features:

Basement: Crawl Space, Partial **Fuel:** Electric **Garage:** 3 **Heat:** Fireplace(s) **Sewer:** Private Sewer, Septic System Compliant - Yes **Water:** Sand Point, Well **Air Conditioning:** None

Driving Directions:

From Nisswa north on Hwy 371 to east on County Rd 107 (Wilderness Rd). Curve to left to Fire # 27601



Listed By:
Kurilla Real Estate LTD

Affinity Real Estate Inc. participates in the Regional Multiple Listing Service of Minnesota, Inc Broker Reciprocity (sm) program, allowing us to display other broker's listings on our website. All properties are subject to prior sale, change or withdrawal.



Call Affinity Real Estate

218-237-3333

info@affinityrealestate.com



Affinity Real Estate - 600 Park Avenue South - Park Rapids MN 56470



website: www.AffinityRealEstate.com | email: info@affinityrealestate.com | office: 218-237-3333 | fax: 218-237-3377

Affinity
REAL ESTATE INC

\$395,000

MLS 6757490 Lake Home
27601 County Road 107
Pequot Lakes MN 56472



website: www.AffinityRealEstate.com | email: info@affinityrealestate.com | office: 218-237-3333 | fax: 218-237-3377



\$395,000

MLS 6757490 Lake Home
27601 County Road 107
Pequot Lakes MN 56472



website: www.AffinityRealEstate.com | email: info@affinityrealestate.com | office: 218-237-3333 | fax: 218-237-3377

Affinity
REAL ESTATE INC

\$395,000

MLS 6757490 Lake Home
27601 County Road 107
Pequot Lakes MN 56472



website: www.AffinityRealEstate.com | email: info@affinityrealestate.com | office: 218-237-3333 | fax: 218-237-3377



\$395,000
 MLS 6757490 Lake Home
 27601 County Road 107
 Pequot Lakes MN 56472



website: www.AffinityRealEstate.com | email: info@affinityrealestate.com | office: 218-237-3333 | fax: 218-237-3377



\$395,000
 MLS 6757490 Lake Home
 27601 County Road 107
 Pequot Lakes MN 56472

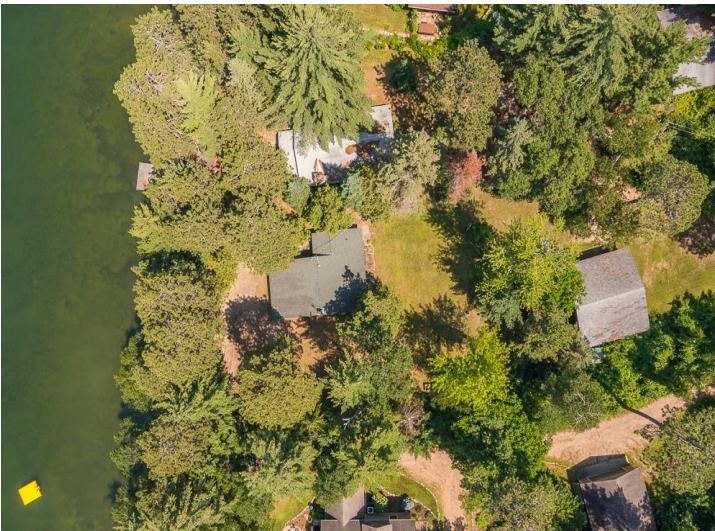


website: www.AffinityRealEstate.com | email: info@affinityrealestate.com | office: 218-237-3333 | fax: 218-237-3377

Affinity
REAL ESTATE INC

\$395,000

MLS 6757490 Lake Home
27601 County Road 107
Pequot Lakes MN 56472



website: www.AffinityRealEstate.com | email: info@affinityrealestate.com | office: 218-237-3333 | fax: 218-237-3377

Affinity
REAL ESTATE INC

\$395,000

MLS 6757490 Lake Home
27601 County Road 107
Pequot Lakes MN 56472