



MLS 6757604 Residential

\$460,000

1,536 sq ft
2 bedrooms
2 baths

5109 Shangri La Drive
Longville MN 56655

Status: Coming Soon

Description:

Tucked into 28 acres of towering red pines and bordered by the Chippewa National Forest on two sides, this property offers more than privacy, it offers presence. The newly reconstructed drive winds through a cathedral of trees, setting the tone before you even reach the home: this is somewhere meaningful. Every inch of the two-bedroom, two-bath residence has been thoughtfully rebuilt with precision and purpose. From the custom shaker-style cabinetry with soft-close hardware to the seamless stone surfaces throughout, including matching window sills, nothing has been overlooked. The kitchen features intelligently designed storage with rollouts for spices, trays, and waste bins, a five-burner gas range, and Samsung "Bespoke" appliances are all framed by lightly stained white oak that echoes the durable, low-maintenance luxury vinyl flooring. Nine-foot ceilings create volume throughout the open-concept kitchen, living, and dining spaces. A flex room adds versatility, while the main bedroom includes a walk-in closet and zoned climate control for personal comfort. Bathrooms are appointed with in-floor heat, linen storage, and frameless glass, all grounded in clean, enduring design. The home's light, airy palette is more than just a design choice, it lifts the space and draws your eyes outward to the rich greens and earthy tones of the surrounding forest. The soft whites and pale wood accents create a calm, clean backdrop that both celebrates the setting and easily welcomes any personal style or color preference. Behind the walls, new systems deliver quiet reliability: a LP gas boiler with on-demand hot water, dual-zone heating, new water softener and pressure tank, and supplemental heating via a new wood stove capable of warming the entire home. Outside, the experience continues. A generous 26' x 36' garage with 10' sidewalls and full electrical service stands ready for work or storage. Trails lace the acreage, winding past gardens, pines, and a serene wildlife pond. There's also a 24' x 12' powered shed with an additional lean-to, ideal for tools or seasonal gear. This isn't just a renovated home. It's a complete reset, an opportunity to live in sync with the land, surrounded by craftsmanship that reflects a deep respect for both form and function.

Additional Details:

Year Built	1999
Lot Acres	27.97
Lot Dimensions	327x805x127x532x969x1165x748x263
Garage Stalls	2
School District	118
Taxes	\$1,074

1	Broker Reciprocity	ents \$1,140
1	Heartland Estate	Listed By: 2025

Affinity Real Estate Inc. participates in the Regional Multiple Listing Service of Minnesota, Inc Broker Reciprocity (sm) program, allowing

Basement: play area, full kitchen, garage, 2 heat, 10' drop ceiling, split, fire place, 12' x 12' tile
Subject to prior sale. All conditions. Ductless Mini-Split

Driving Directions:

©2025 Acme Webwerks - Affinity Real Estate Inc - Licensed in Minnesota - Brochure v.2019.05.23.2 - 216.73.216.20 - 2025.08.02 14:25:04
From Longville - Head out of town on CO Rd 5 for 2.1 miles. Turn left onto Shangri La Dr NE to the subject property on the right.



Call Affinity Real Estate

218-237-3333

info@affinityrealestate.com

MLS R Home Field Water:

Affinity Real Estate - 600 Park Avenue South - Park Rapids MN 56470



website: www.AffinityRealEstate.com | email: info@affinityrealestate.com | office: 218-237-3333 | fax: 218-237-3377

Affinity
REAL ESTATE INC

\$460,000
MLS 6757604 Residential
5109 Shangri La Drive
Longville MN 56655



website: www.AffinityRealEstate.com | email: info@affinityrealestate.com | office: 218-237-3333 | fax: 218-237-3377



\$460,000
 MLS 6757604 Residential
 5109 Shangri La Drive
 Longville MN 56655



website: www.AffinityRealEstate.com | email: info@affinityrealestate.com | office: 218-237-3333 | fax: 218-237-3377

Affinity
REAL ESTATE INC

\$460,000
MLS 6757604 Residential
5109 Shangri La Drive
Longville MN 56655



website: www.AffinityRealEstate.com | email: info@affinityrealestate.com | office: 218-237-3333 | fax: 218-237-3377

Affinity
REAL ESTATE INC

\$460,000
MLS 6757604 Residential
5109 Shangri La Drive
Longville MN 56655



website: www.AffinityRealEstate.com | email: info@affinityrealestate.com | office: 218-237-3333 | fax: 218-237-3377

Affinity
REAL ESTATE INC

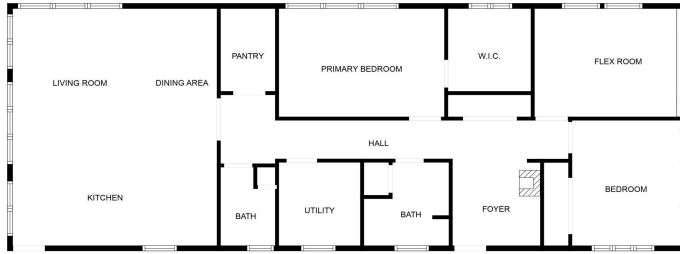
\$460,000
MLS 6757604 Residential
5109 Shangri La Drive
Longville MN 56655



website: www.AffinityRealEstate.com | email: info@affinityrealestate.com | office: 218-237-3333 | fax: 218-237-3377



\$460,000
 MLS 6757604 Residential
 5109 Shangri La Drive
 Longville MN 56655



FLOOR PLAN CREATED BY CUBICASA API. MEASUREMENTS DEEMED HIGHLY RELIABLE BUT NOT GUARANTEED.

website: www.AffinityRealEstate.com | email: info@affinityrealestate.com | office: 218-237-3333 | fax: 218-237-3377



\$460,000

MLS 6757604 Residential
5109 Shangri La Drive
Longville MN 56655