



MLS 6757775 Land

**\$59,900**

40.56 Acres  
Raw Land

TBD 20th St. SW 20 St. SW  
Pine River MN 56474

Status: Active

**Description:**

Escape to 40 acres of pristine wilderness. Perfect for those seeking privacy, solitude, and a deep connection with nature. This off grid property features a rich mix of high ground with mature pines and lowland swamp, offering a rich habitat for attracting large deer. Bordered by public land on two sides, this parcel serves as a sanctuary for wildlife to seek refuge. A large stand overlooking the swamp and pines is prepared and ready for use. The parcel can be accessed on foot with hip boots at the end of 20 St. SW or potentially through the public land. Don't wait too long to seize this affordable slice of paradise.

**Additional Details:**

Lot Acres	40.56
Lot Dimensions	1340x1314x1346x1312
School District	2174
Taxes	\$184
Taxes with Assessments	\$184
Tax Year	2025

**Additional Features:**

**Driving Directions:**

Take 2 west of Pine River to north on 25 to west on 20th St. SW



Listed By:  
Woods to Water Real Estate

Affinity Real Estate Inc. participates in the Regional Multiple Listing Service of Minnesota, Inc Broker Reciprocity (sm) program, allowing us to display other broker's listings on our website. All properties are subject to prior sale, change or withdrawal.



**Call Affinity Real Estate**

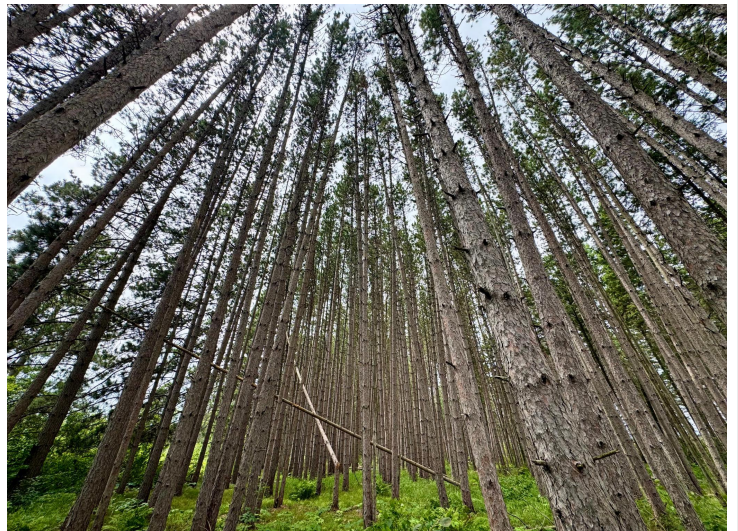
**218-237-3333**

**info@affinityrealestate.com**



**Affinity Real Estate - 600 Park Avenue South - Park Rapids MN 56470**





website: [www.AffinityRealEstate.com](http://www.AffinityRealEstate.com) | email: [info@affinityrealestate.com](mailto:info@affinityrealestate.com) | office: 218-237-3333 | fax: 218-237-3377



**\$59,900**  
MLS 6757775 Land  
TBD 20th St. SW 20 St. SW  
Pine River MN 56474





website: [www.AffinityRealEstate.com](http://www.AffinityRealEstate.com) | email: [info@affinityrealestate.com](mailto:info@affinityrealestate.com) | office: 218-237-3333 | fax: 218-237-3377



**\$59,900**  
MLS 6757775 Land  
TBD 20th St. SW 20 St. SW  
Pine River MN 56474





website: [www.AffinityRealEstate.com](http://www.AffinityRealEstate.com) | email: [info@affinityrealestate.com](mailto:info@affinityrealestate.com) | office: 218-237-3333 | fax: 218-237-3377



**\$59,900**  
MLS 6757775 Land  
TBD 20th St. SW 20 St. SW  
Pine River MN 56474



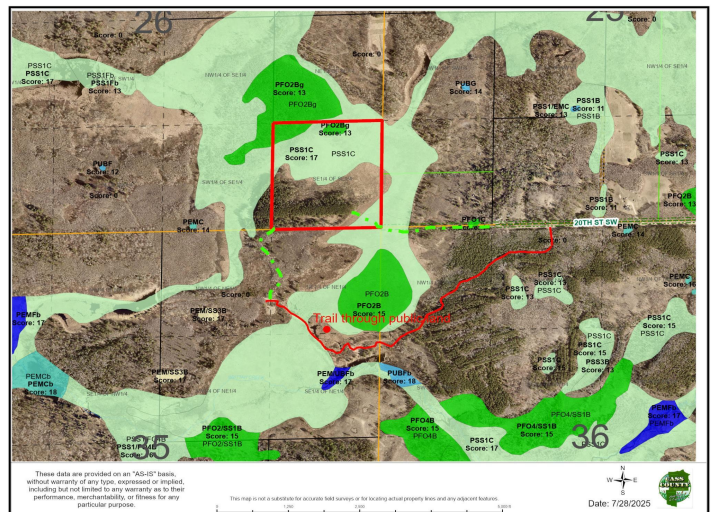
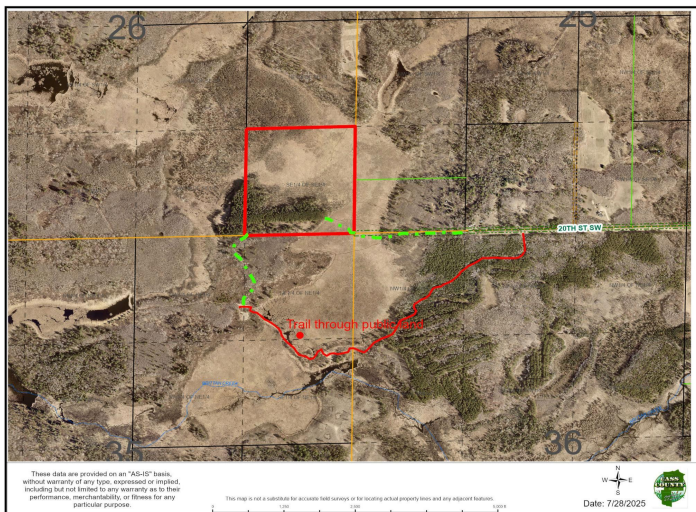


website: [www.AffinityRealEstate.com](http://www.AffinityRealEstate.com) | email: [info@affinityrealestate.com](mailto:info@affinityrealestate.com) | office: 218-237-3333 | fax: 218-237-3377



**\$59,900**  
 MLS 6757775 Land  
 TBD 20th St. SW 20 St. SW  
 Pine River MN 56474



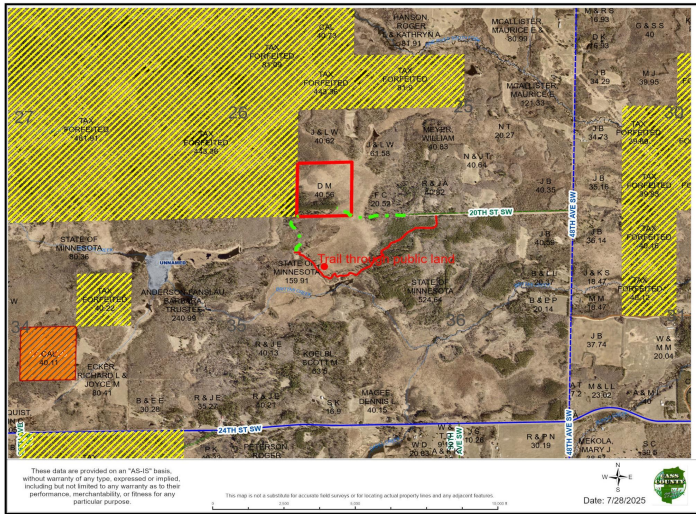


website: [www.AffinityRealEstate.com](http://www.AffinityRealEstate.com) | email: [info@affinityrealestate.com](mailto:info@affinityrealestate.com) | office: 218-237-3333 | fax: 218-237-3377

**Affinity**  
REAL ESTATE INC

**\$59,900**  
MLS 6757775 Land  
TBD 20th St. SW 20 St. SW  
Pine River MN 56474





website: [www.AffinityRealEstate.com](http://www.AffinityRealEstate.com) | email: [info@affinityrealestate.com](mailto:info@affinityrealestate.com) | office: 218-237-3333 | fax: 218-237-3377



**\$59,900**  
 MLS 6757775 Land  
 TBD 20th St. SW 20 St. SW  
 Pine River MN 56474