



MLS 6758175 Lake Home

\$750,000

1,998 sq ft
3 bedrooms
3 baths

22402 Shore Drive
Emily MN 56447

Waterfront: Mary

Status: Active

Description:

Enjoy lake life on Mary Lake! This furnished 2+ bedroom, 2 bath home is in mint condition and exhibits an "Up North" feel with knotty pine throughout, a floor-to-ceiling stone fireplace and beautiful hardwood floors. The detached 2+ car garage includes a guest cabin with a living room, bedroom, $\frac{3}{4}$ bath plus a large workshop area – plenty of room for storage, projects or a space for entertainment. Situated on a private 1 acre lot, this property boasts mature trees and moderate elevation down to 150' of shoreline on the lake. Gather with friends and family on the lakeside deck or around the firepit to enjoy the views and the outdoors. The location is as convenient as it is picturesque – situated a short distance from the city of Emily and numerous area lakes. Don't miss this opportunity to own an exceptional property with all the features that make living on Mary Lake so special.

Additional Details:

Year Built	1990
Lot Acres	1.03
Lot Dimensions	150 x 340 x 122 x 303
Garage Stalls	2
School District	182
Taxes	\$4,315
Taxes with Assessments	\$4,340
Tax Year	2025

Additional Features:

Fuel: Electric, Propane **Heat:** Baseboard, Dual, Fireplace(s)

Driving Directions:

From the intersection of County Road 1 and County Road 6 in Emily, go east on County Road 1 for approximately .8 miles. Turn right onto Whitetail Drive. Turn right onto S. Shore Drive, go over the bridge and then turn left to stay on S. Shore Drive and follow to fire#22402 on the left.



Listed By:
Larson Group Real Estate/Kelle

Affinity Real Estate Inc. participates in the Regional Multiple Listing Service of Minnesota, Inc Broker Reciprocity (sm) program, allowing us to display other broker's listings on our website. All properties are subject to prior sale, change or withdrawal.



Call Affinity Real Estate

218-237-3333

info@affinityrealestate.com



Affinity Real Estate - 600 Park Avenue South - Park Rapids MN 56470



website: www.AffinityRealEstate.com | email: info@affinityrealestate.com | office: 218-237-3333 | fax: 218-237-3377

Affinity
REAL ESTATE INC

\$750,000
MLS 6758175 Lake Home
22402 Shore Drive
Emily MN 56447



website: www.AffinityRealEstate.com | email: info@affinityrealestate.com | office: 218-237-3333 | fax: 218-237-3377

Affinity
REAL ESTATE INC

\$750,000
MLS 6758175 Lake Home
22402 Shore Drive
Emily MN 56447



website: www.AffinityRealEstate.com | email: info@affinityrealestate.com | office: 218-237-3333 | fax: 218-237-3377

Affinity
REAL ESTATE INC

\$750,000
MLS 6758175 Lake Home
22402 Shore Drive
Emily MN 56447



website: www.AffinityRealEstate.com | email: info@affinityrealestate.com | office: 218-237-3333 | fax: 218-237-3377

Affinity
REAL ESTATE INC

\$750,000
MLS 6758175 Lake Home
22402 Shore Drive
Emily MN 56447



website: www.AffinityRealEstate.com | email: info@affinityrealestate.com | office: 218-237-3333 | fax: 218-237-3377

Affinity
REAL ESTATE INC

\$750,000
MLS 6758175 Lake Home
22402 Shore Drive
Emily MN 56447



website: www.AffinityRealEstate.com | email: info@affinityrealestate.com | office: 218-237-3333 | fax: 218-237-3377



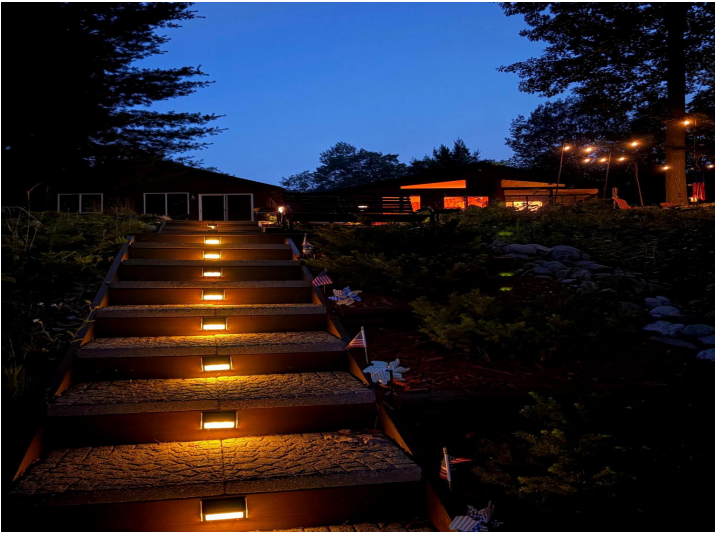
\$750,000
 MLS 6758175 Lake Home
 22402 Shore Drive
 Emily MN 56447



website: www.AffinityRealEstate.com | email: info@affinityrealestate.com | office: 218-237-3333 | fax: 218-237-3377

Affinity
REAL ESTATE INC

\$750,000
MLS 6758175 Lake Home
22402 Shore Drive
Emily MN 56447



website: www.AffinityRealEstate.com | email: info@affinityrealestate.com | office: 218-237-3333 | fax: 218-237-3377

Affinity
REAL ESTATE INC

\$750,000
MLS 6758175 Lake Home
22402 Shore Drive
Emily MN 56447



website: www.AffinityRealEstate.com | email: info@affinityrealestate.com | office: 218-237-3333 | fax: 218-237-3377

Affinity
REAL ESTATE INC

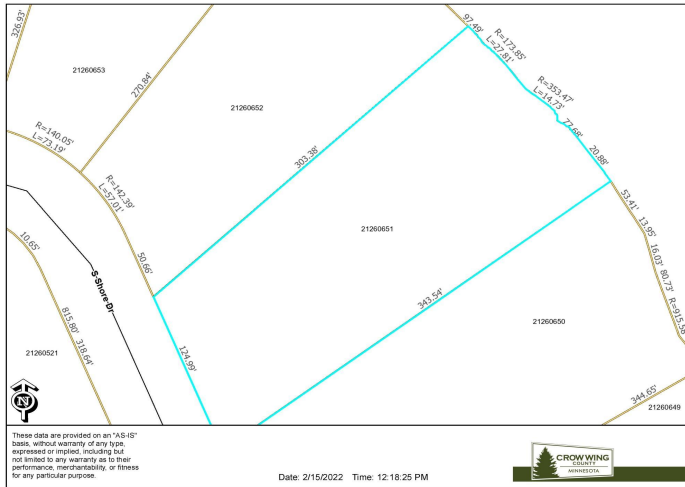
\$750,000
MLS 6758175 Lake Home
22402 Shore Drive
Emily MN 56447



website: www.AffinityRealEstate.com | email: info@affinityrealestate.com | office: 218-237-3333 | fax: 218-237-3377

Affinity
REAL ESTATE INC

\$750,000
MLS 6758175 Lake Home
22402 Shore Drive
Emily MN 56447



website: www.AffinityRealEstate.com | email: info@affinityrealestate.com | office: 218-237-3333 | fax:218-237-3377



\$750,000
MLS 6758175 Lake Home
22402 Shore Drive
Emily MN 56447