



MLS 6758190 Lake Home

**\$900,000**

1,584 sq ft  
3 bedrooms  
2 baths

36945 Delta Bay Road  
Pine River MN 56474

Waterfront: Whitefish Lake  
(18031000)

Status: Active

**Description:**

Whitefish Lake Waterfront: 115 feet of south-facing frontage on the Whitefish Lake Chain (Delta Bay area, providing calm, protected waters with easy access to Upper Whitefish Lake and the broader chain). The property emphasizes a peaceful retreat vibe, with towering pines and level lot suitable for outdoor activities. South-facing orientation for optimal sunlight and views.

Modern updates from the 2007 remodel, including both exterior & interior finishes .

Ideal for year-round or seasonal use, with emphasis on privacy and natural beauty.

Proximity to Pine River amenities, including shops, dining, and outdoor trails.

Part of the sought-after Whitefish Chain, known for 119 miles of shoreline, excellent fishing (walleye, bass, northern pike), and boating access to restaurants and marinas.

**Additional Details:**

Year Built	1995
Lot Acres	0.41
Lot Dimensions	124x232x45x214
Garage Stalls	2
School District	186
Taxes	\$2,134
Taxes with Assessments	\$2,134
Tax Year	2024

**Additional Features:**

**Basement:** Full, Walkout **Fuel:** Propane **Garage:** 2 **Heat:** Dual, Forced Air, Wood Stove **Sewer:** Private Sewer, Septic System Compliant - Yes, Tank with Drainage Field **Water:** Drilled, Private, Well **Air Conditioning:** Central Air

**Driving Directions:**

Wildamere Drive to Heath Drive which turns into Delta Bay Road



Listed By:  
Norwoods Realty

Affinity Real Estate Inc. participates in the Regional Multiple Listing Service of Minnesota, Inc Broker Reciprocity (sm) program, allowing us to display other broker's listings on our website. All properties are subject to prior sale, change or withdrawal.



**Call Affinity Real Estate**

**218-237-3333**

**info@affinityrealestate.com**



**Affinity Real Estate - 600 Park Avenue South - Park Rapids MN 56470**





website: [www.AffinityRealEstate.com](http://www.AffinityRealEstate.com) | email: [info@affinityrealestate.com](mailto:info@affinityrealestate.com) | office: 218-237-3333 | fax: 218-237-3377

**Affinity**  
REAL ESTATE INC

**\$900,000**

MLS 6758190 Lake Home  
36945 Delta Bay Road  
Pine River MN 56474





website: [www.AffinityRealEstate.com](http://www.AffinityRealEstate.com) | email: [info@affinityrealestate.com](mailto:info@affinityrealestate.com) | office: 218-237-3333 | fax: 218-237-3377



**\$900,000**  
 MLS 6758190 Lake Home  
 36945 Delta Bay Road  
 Pine River MN 56474





website: [www.AffinityRealEstate.com](http://www.AffinityRealEstate.com) | email: [info@affinityrealestate.com](mailto:info@affinityrealestate.com) | office: 218-237-3333 | fax: 218-237-3377

**Affinity**  
REAL ESTATE INC

**\$900,000**  
MLS 6758190 Lake Home  
36945 Delta Bay Road  
Pine River MN 56474



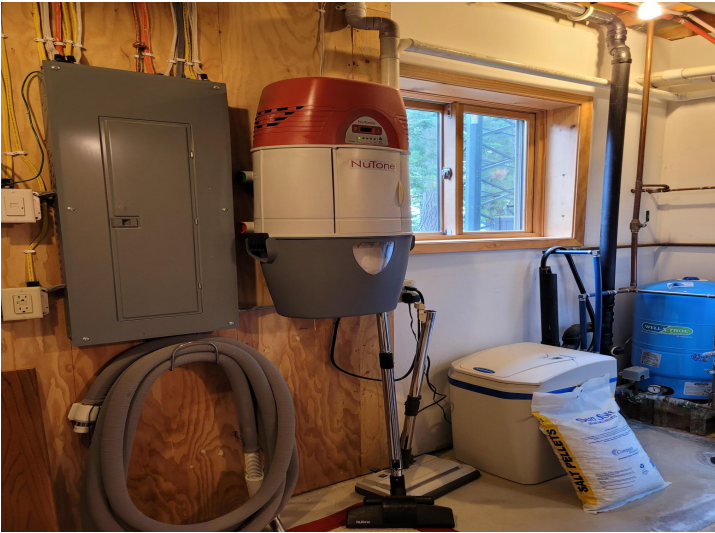


website: [www.AffinityRealEstate.com](http://www.AffinityRealEstate.com) | email: [info@affinityrealestate.com](mailto:info@affinityrealestate.com) | office: 218-237-3333 | fax: 218-237-3377

**Affinity**  
REAL ESTATE INC

**\$900,000**  
MLS 6758190 Lake Home  
36945 Delta Bay Road  
Pine River MN 56474





website: [www.AffinityRealEstate.com](http://www.AffinityRealEstate.com) | email: [info@affinityrealestate.com](mailto:info@affinityrealestate.com) | office: 218-237-3333 | fax: 218-237-3377



**\$900,000**  
 MLS 6758190 Lake Home  
 36945 Delta Bay Road  
 Pine River MN 56474