



MLS 6758341 Residential

\$424,900

1,612 sq ft
3 bedrooms
2 baths

20633 County Highway 21
Detroit Lakes MN 56501

Status: Active

Description:

Looking for one-level living, lake life, and low maintenance all in one? THIS IS IT..... Built in 2023, this beautifully designed slab-on-grade townhome offers 3 bedrooms, 2 bathrooms, and a finished, heated 2-stall garage. The primary suite offers a walk-in closet, walk-in shower, and dual sinks with quartz counters. Two additional bedrooms are thoughtfully placed near a full bathroom with quartz finishes. The open floor plan is filled with natural light, featuring large windows, an electric fireplace in the living room, and durable vinyl plank flooring throughout the home. The kitchen includes quartz countertops, soft-close cabinetry, a coffee bar, stainless steel appliances, and an induction cooktop (Kitchen appliances, washer & dryer, and ENTIRE house arsenic filtration system included in the sale). Open the sliding patio door to enjoy your patio area. In addition, as part of a Common Interest Community (CIC), enjoy a heated in-ground pool, clubhouse with entertainment area and bathroom, firepit area, snow removal and lawn care, dock access on Little Floyd Lake for just \$100/per month, with a deeded boat slip. Looking for more, boat over to Sunlite Bar & Grill for lunch or take in the big catch to bring home for supper! Lake living has never been this easy...just move in and enjoy!

Additional Details:

Year Built	2023
Lot Acres	1.12
Lot Dimensions	1.12 Acre
Garage Stalls	2
School District	1074
Taxes	\$1,520
Taxes with Assessments	\$1,582
Tax Year	2025

Additional Features:

Fuel: Array **Heat:** Ductless Mini-Split, In-Floor Heating

Driving Directions:

From Detroit Lakes, Head north on Washington Ave toward Holmes St W. Turn E onto N St E/Lake Country Scenic Bywy. Turn N onto Co Hwy 21/Richwood Rd. Turn NE onto Evergreen Shores Dr. Turn NW onto Co Hwy 21. Destination will be on the left.



Listed By:
Keller Williams Realty Profess

Affinity Real Estate Inc. participates in the Regional Multiple Listing Service of Minnesota, Inc Broker Reciprocity (sm) program, allowing us to display other broker's listings on our website. All properties are subject to prior sale, change or withdrawal.



Call Affinity Real Estate

218-237-3333

info@affinityrealestate.com



Affinity Real Estate - 600 Park Avenue South - Park Rapids MN 56470



website: www.AffinityRealEstate.com | email: info@affinityrealestate.com | office: 218-237-3333 | fax: 218-237-3377



\$424,900
 MLS 6758341 Residential
 20633 County Highway 21
 Detroit Lakes MN 56501



website: www.AffinityRealEstate.com | email: info@affinityrealestate.com | office: 218-237-3333 | fax: 218-237-3377



\$424,900
 MLS 6758341 Residential
 20633 County Highway 21
 Detroit Lakes MN 56501



website: www.AffinityRealEstate.com | email: info@affinityrealestate.com | office: 218-237-3333 | fax: 218-237-3377



\$424,900
 MLS 6758341 Residential
 20633 County Highway 21
 Detroit Lakes MN 56501



website: www.AffinityRealEstate.com | email: info@affinityrealestate.com | office: 218-237-3333 | fax: 218-237-3377



\$424,900
 MLS 6758341 Residential
 20633 County Highway 21
 Detroit Lakes MN 56501



website: www.AffinityRealEstate.com | email: info@affinityrealestate.com | office: 218-237-3333 | fax: 218-237-3377



\$424,900
 MLS 6758341 Residential
 20633 County Highway 21
 Detroit Lakes MN 56501



website: www.AffinityRealEstate.com | email: info@affinityrealestate.com | office: 218-237-3333 | fax: 218-237-3377



\$424,900

MLS 6758341 Residential
20633 County Highway 21
Detroit Lakes MN 56501



website: www.AffinityRealEstate.com | email: info@affinityrealestate.com | office: 218-237-3333 | fax: 218-237-3377



\$424,900

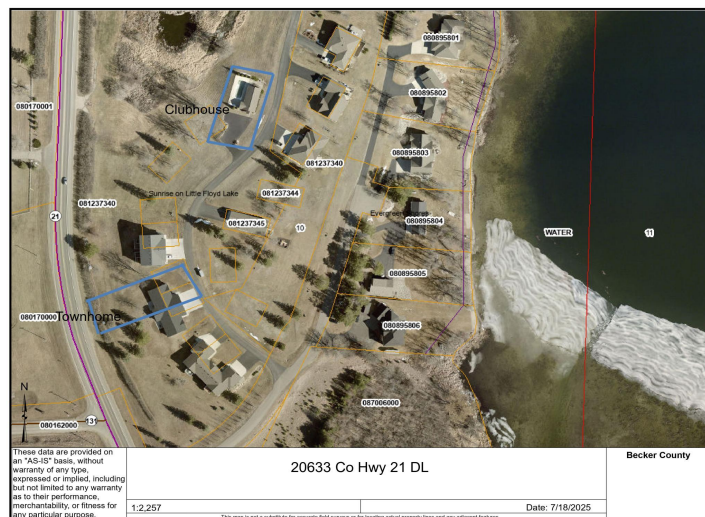
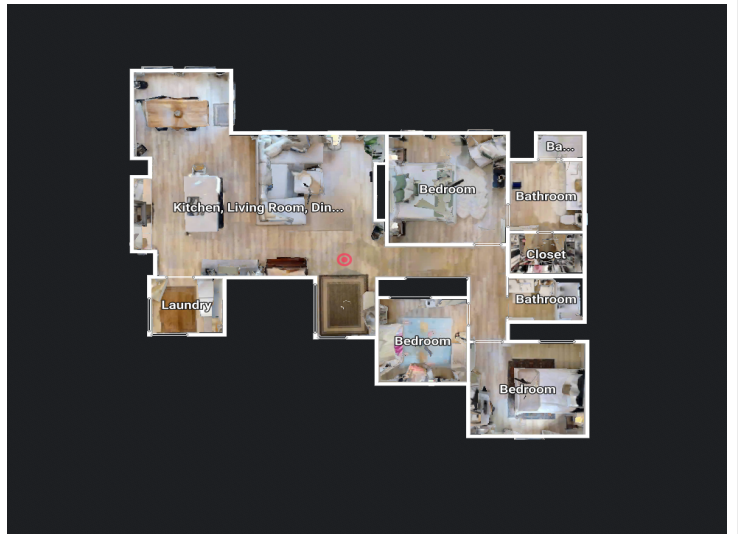
MLS 6758341 Residential
20633 County Highway 21
Detroit Lakes MN 56501



website: www.AffinityRealEstate.com | email: info@affinityrealestate.com | office: 218-237-3333 | fax: 218-237-3377



\$424,900
 MLS 6758341 Residential
 20633 County Highway 21
 Detroit Lakes MN 56501



website: www.AffinityRealEstate.com | email: info@affinityrealestate.com | office: 218-237-3333 | fax: 218-237-3377

Affinity
REAL ESTATE INC

\$424,900
MLS 6758341 Residential
20633 County Highway 21
Detroit Lakes MN 56501

website: www.AffinityRealEstate.com | email: info@affinityrealestate.com | office: 218-237-3333 | fax:218-237-3377



\$424,900

MLS 6758341 Residential
20633 County Highway 21
Detroit Lakes MN 56501