



MLS 6758489 Residential

\$299,900

2,208 sq ft
4 bedrooms
2 baths

61257 Leaf River Road
Wadena MN 56482

Status: Active

Description:

This thoughtfully updated four-bedroom, two-bathroom home sits on an expansive 2.5 acres that feels like your own private park, complete with mature trees and plenty of room to breathe. Inside the home, you'll find that many updates have already been completed, and that you can move right in without the hassle of immediate renovations

A massive 30x48 heated shop that's every hobbyist's dream come true. Whether you're tinkering with classic cars, woodworking, or need serious storage space, this workshop handles it all while keeping you comfortable year-round.

This property offers the rare combination of privacy, space, and functionality that's increasingly hard to find. It's perfect for those seeking room to grow, play, and create memories in a truly special setting.

Additional Details:

Year Built	1977
Lot Acres	2.5
Lot Dimensions	363x300
Garage Stalls	1
School District	1053
Taxes	\$1,386
Taxes with Assessments	\$1,386
Tax Year	2025

Additional Features:

Basement: Block, Egress Window(s), Full **Fuel:** Array **Garage:** 1 **Heat:** Forced Air **Sewer:** Septic System Compliant - No **Water:** Drilled **Air Conditioning:** Central Air

Driving Directions:

East of Bluffton on Leaf River Road



Listed By:
Century 21 Atwood

Affinity Real Estate Inc. participates in the Regional Multiple Listing Service of Minnesota, Inc Broker Reciprocity (sm) program, allowing us to display other broker's listings on our website. All properties are subject to prior sale, change or withdrawal.



Call Affinity Real Estate

218-237-3333

info@affinityrealestate.com



Affinity Real Estate - 600 Park Avenue South - Park Rapids MN 56470



website: www.AffinityRealEstate.com | email: info@affinityrealestate.com | office: 218-237-3333 | fax: 218-237-3377

Affinity
REAL ESTATE INC

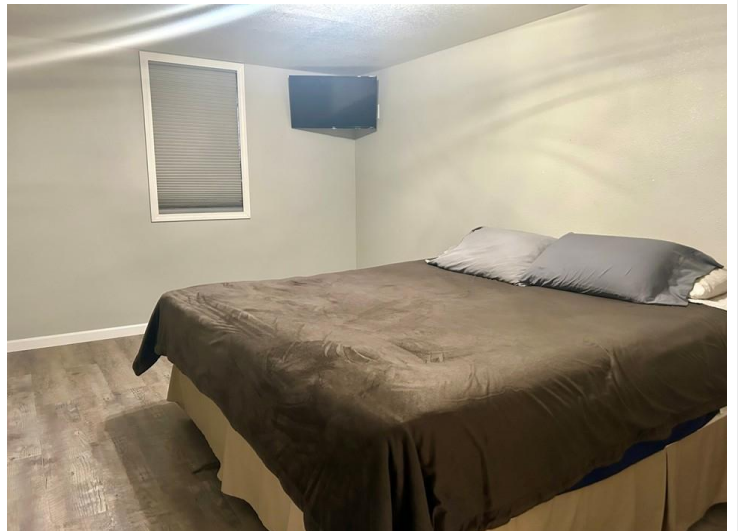
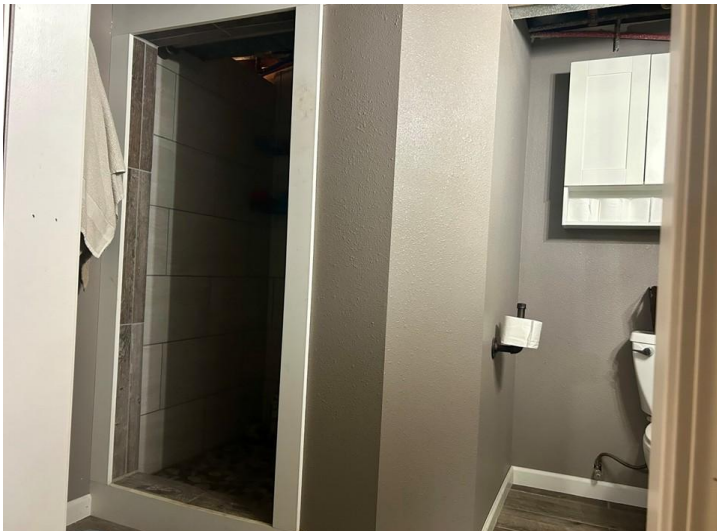
\$299,900
MLS 6758489 Residential
61257 Leaf River Road
Wadena MN 56482



website: www.AffinityRealEstate.com | email: info@affinityrealestate.com | office: 218-237-3333 | fax: 218-237-3377

Affinity
REAL ESTATE INC

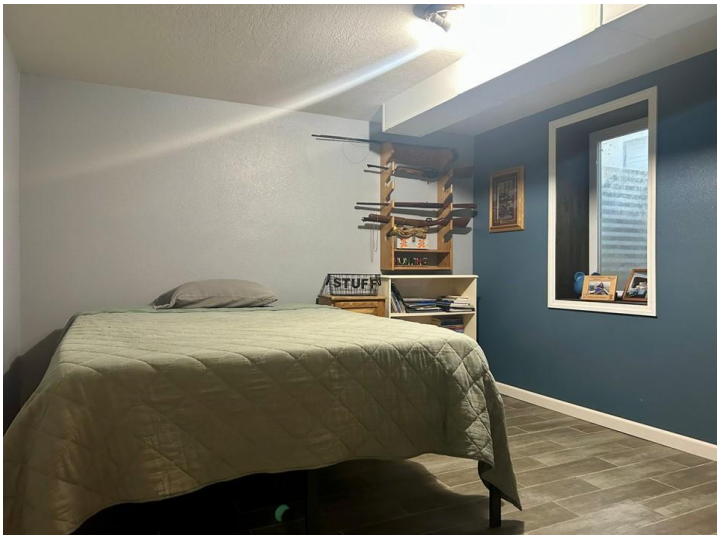
\$299,900
MLS 6758489 Residential
61257 Leaf River Road
Wadena MN 56482



website: www.AffinityRealEstate.com | email: info@affinityrealestate.com | office: 218-237-3333 | fax: 218-237-3377

Affinity
REAL ESTATE INC

\$299,900
MLS 6758489 Residential
61257 Leaf River Road
Wadena MN 56482



website: www.AffinityRealEstate.com | email: info@affinityrealestate.com | office: 218-237-3333 | fax: 218-237-3377

Affinity
REAL ESTATE INC

\$299,900
MLS 6758489 Residential
61257 Leaf River Road
Wadena MN 56482



website: www.AffinityRealEstate.com | email: info@affinityrealestate.com | office: 218-237-3333 | fax: 218-237-3377



\$299,900
 MLS 6758489 Residential
 61257 Leaf River Road
 Wadena MN 56482



website: www.AffinityRealEstate.com | email: info@affinityrealestate.com | office: 218-237-3333 | fax:218-237-3377



\$299,900

MLS 6758489 Residential
61257 Leaf River Road
Wadena MN 56482