



MLS 6758724 Residential

\$159,900

1,600 sq ft
3 bedrooms
2 baths

213 Cherry Street
Bertha MN 56437

Status: Pending

Description:

Welcome to this beautifully cared-for 3-bedroom, 1.25-bath home located in the city of Bertha, MN. This charming 1.5-story home blends vintage character with thoughtful updates throughout. Step inside to find original hardwood floors extending through most of the home, complemented by unique cove-style woodwork on the walls and ceilings that add warmth and craftsmanship. The kitchen offers functional space, while the rest of the home maintains its original charm with tasteful updates. Enjoy peace of mind with all-new windows and a new roof installed just 12 years ago. The property features both an attached single-car garage and a spacious detached 24'x24' two-car garage, perfect for storage, hobbies, or workshop space. Situated on a 50'x150' lot, you'll appreciate the manageable yard and the small-town setting Bertha offers, ideal for anyone seeking comfort, character, and community. This property is a 'must-see'!

Additional Details:

Year Built	1940
Lot Acres	0.22
Lot Dimensions	50x150
Garage Stalls	3
School District	786
Taxes	\$1,326
Taxes with Assessments	\$1,326
Tax Year	2025

Additional Features:

Fuel: Natural Gas **Heat:** Forced Air

Driving Directions:

From the intersection of US Hwy 71 and Main St W in Bertha, go east on Main St W for about 1 block. Turn north onto 2nd Ave NW, go north until the intersection of 2nd Ave NW and Cherry St. At this intersection, turn east, and listing will be on your south side.



Listed By:
Albers Realty

Affinity Real Estate Inc. participates in the Regional Multiple Listing Service of Minnesota, Inc Broker Reciprocity (sm) program, allowing us to display other broker's listings on our website. All properties are subject to prior sale, change or withdrawal.



Call Affinity Real Estate

218-237-3333

info@affinityrealestate.com



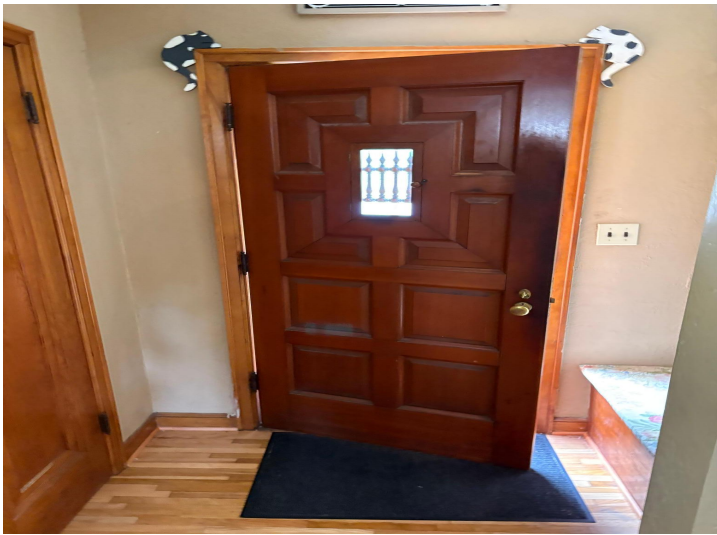
Affinity Real Estate - 600 Park Avenue South - Park Rapids MN 56470



website: www.AffinityRealEstate.com | email: info@affinityrealestate.com | office: 218-237-3333 | fax: 218-237-3377

Affinity
REAL ESTATE INC

\$159,900
MLS 6758724 Residential
213 Cherry Street
Bertha MN 56437



website: www.AffinityRealEstate.com | email: info@affinityrealestate.com | office: 218-237-3333 | fax: 218-237-3377

Affinity
REAL ESTATE INC

\$159,900
MLS 6758724 Residential
213 Cherry Street
Bertha MN 56437



website: www.AffinityRealEstate.com | email: info@affinityrealestate.com | office: 218-237-3333 | fax: 218-237-3377

Affinity
REAL ESTATE INC

\$159,900
MLS 6758724 Residential
213 Cherry Street
Bertha MN 56437



website: www.AffinityRealEstate.com | email: info@affinityrealestate.com | office: 218-237-3333 | fax: 218-237-3377

Affinity
REAL ESTATE INC

\$159,900
MLS 6758724 Residential
213 Cherry Street
Bertha MN 56437