



MLS 6758746 Lake Land

\$89,900

Description:

Lakefront! Finally, a highly affordable, larger lakefront lot hits the market and you'll love the very private access!

- Expansive & Dockable Shoreline
- No HOA or Deed Restrictions
- Private Driveway Access
- Flat & Buildable
- Mound Septic-Approved
- Natural Peace & Privacy
- Priced Below Market

Escape to the quiet beauty of the Northwoods with this rare 1.67-acre lakeshore lot featuring a luxurious 176 feet of shoreline! Located near Hackensack, Minnesota, this property offers a peaceful, buildable setting for your dream cabin, lakefront home, or weekend retreat. Prime Lakeshore Frontage: Enjoy 176 feet of deeded shoreline, perfect for boating, fishing, swimming, or simply relaxing by the water. Only 15 minutes to Hackensack, where you'll find restaurants, groceries, and other essentials. Whether you're looking to build your forever home or a weekend getaway by the water, this property offers unmatched value, beauty, and freedom.

Additional Details:

Lot Acres	1.67
Lot Dimensions	176x358x237x658
School District	118
Taxes	\$498
Taxes with Assessments	(unreported)
Tax Year	2024

Additional Features:

Driving Directions:

For more information, please contact the listing agent. The Affinity Real Estate Inc. participates in the Regional Multiple Listing Service of Minnesota, Inc Broker Reciprocity (sm) program, allowing us to display other broker's listings on our website. All properties are subject to prior sale, change or withdrawal.



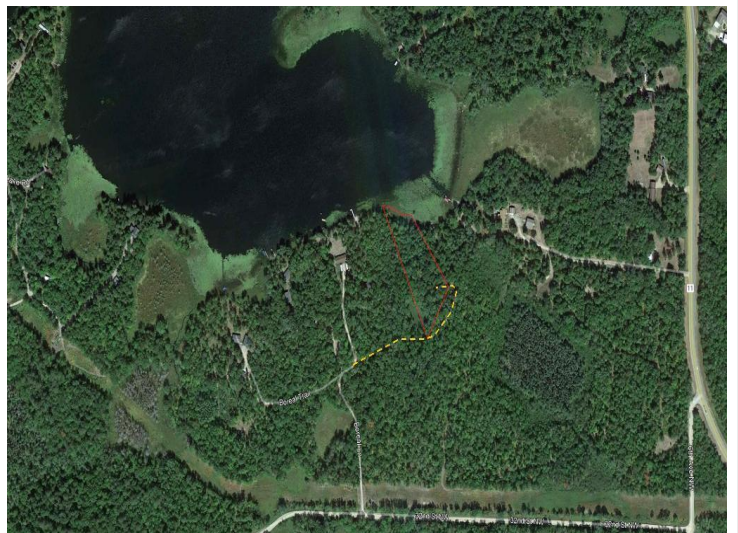
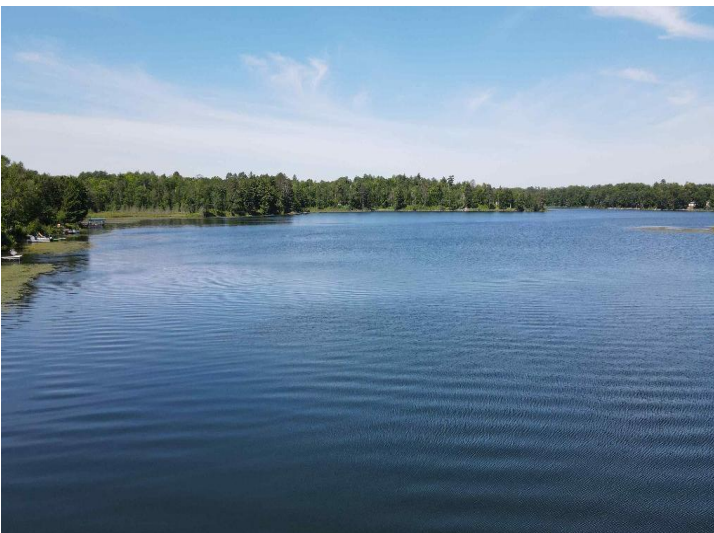
Call Affinity Real Estate

218-237-3333

info@affinityrealestate.com



Affinity Real Estate - 600 Park Avenue South - Park Rapids MN 56470



website: www.AffinityRealEstate.com | email: info@affinityrealestate.com | office: 218-237-3333 | fax: 218-237-3377



\$89,900
 MLS 6758746 Lake Land
 3275 Boreal Lane
 Hackensack MN 56452



website: www.AffinityRealEstate.com | email: info@affinityrealestate.com | office: 218-237-3333 | fax: 218-237-3377



\$89,900
 MLS 6758746 Lake Land
 3275 Boreal Lane
 Hackensack MN 56452



website: www.AffinityRealEstate.com | email: info@affinityrealestate.com | office: 218-237-3333 | fax: 218-237-3377

Affinity
REAL ESTATE INC

\$89,900
MLS 6758746 Lake Land
3275 Boreal Lane
Hackensack MN 56452



website: www.AffinityRealEstate.com | email: info@affinityrealestate.com | office: 218-237-3333 | fax: 218-237-3377



\$89,900

MLS 6758746 Lake Land
3275 Boreal Lane
Hackensack MN 56452



website: www.AffinityRealEstate.com | email: info@affinityrealestate.com | office: 218-237-3333 | fax: 218-237-3377



\$89,900

MLS 6758746 Lake Land
3275 Boreal Lane
Hackensack MN 56452



website: www.AffinityRealEstate.com | email: info@affinityrealestate.com | office: 218-237-3333 | fax: 218-237-3377



\$89,900

MLS 6758746 Lake Land
3275 Boreal Lane
Hackensack MN 56452