



MLS 6758917 Residential

**\$274,900**

1,932 sq ft  
3 bedrooms  
3 baths

109 Stephen Drive  
Fertile MN 56540

Status: Active

**Description:**

This 3 bedroom (potentially 4 bedroom), 3 bath Rambler with attached garage is tucked into a quiet, well-kept community. With plenty of room inside and out, it offers the perfect balance of comfort, style, and functionality. It has updated appliances, a primary en-suite with walk-in-shower, newer windows and flooring and laundry on both levels. There is plenty of room for guests, hobbies, and entertainment. The back yard is fenced and exceptionally private, with gardens and mature trees.

**Additional Details:**

Year Built	1978
Lot Acres	0.33
Lot Dimensions	14250 sf
Garage Stalls	2
School District	599
Taxes	\$2,056
Taxes with Assessments	\$2,316
Tax Year	2024

**Additional Features:**

**Basement:** Full **Fuel:** Electric **Garage:** 2 **Heat:** Baseboard, Radiant Floor **Sewer:** City Sewer/Connected **Water:** City Water/Connected **Air Conditioning:** Ductless Mini-Split

**Driving Directions:**

NE side of Fertile, 109 Stephen Dr NE, Fertile, MN



Listed By:  
Minnesota First Realty

Affinity Real Estate Inc. participates in the Regional Multiple Listing Service of Minnesota, Inc Broker Reciprocity (sm) program, allowing us to display other broker's listings on our website. All properties are subject to prior sale, change or withdrawal.



**Call Affinity Real Estate**

**218-237-3333**

**info@affinityrealestate.com**



**Affinity Real Estate - 600 Park Avenue South - Park Rapids MN 56470**





website: [www.AffinityRealEstate.com](http://www.AffinityRealEstate.com) | email: [info@affinityrealestate.com](mailto:info@affinityrealestate.com) | office: 218-237-3333 | fax: 218-237-3377

**Affinity**  
REAL ESTATE INC

**\$274,900**  
MLS 6758917 Residential  
109 Stephen Drive  
Fertile MN 56540





website: [www.AffinityRealEstate.com](http://www.AffinityRealEstate.com) | email: [info@affinityrealestate.com](mailto:info@affinityrealestate.com) | office: 218-237-3333 | fax: 218-237-3377



**\$274,900**  
 MLS 6758917 Residential  
 109 Stephen Drive  
 Fertile MN 56540





website: [www.AffinityRealEstate.com](http://www.AffinityRealEstate.com) | email: [info@affinityrealestate.com](mailto:info@affinityrealestate.com) | office: 218-237-3333 | fax: 218-237-3377



**\$274,900**  
 MLS 6758917 Residential  
 109 Stephen Drive  
 Fertile MN 56540



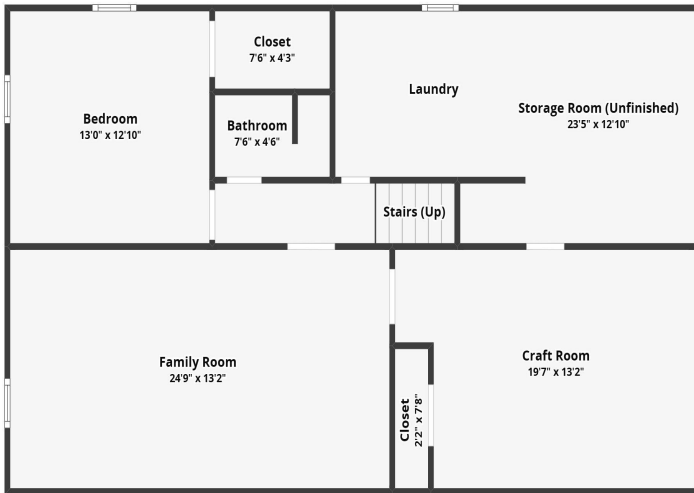


website: [www.AffinityRealEstate.com](http://www.AffinityRealEstate.com) | email: [info@affinityrealestate.com](mailto:info@affinityrealestate.com) | office: 218-237-3333 | fax: 218-237-3377

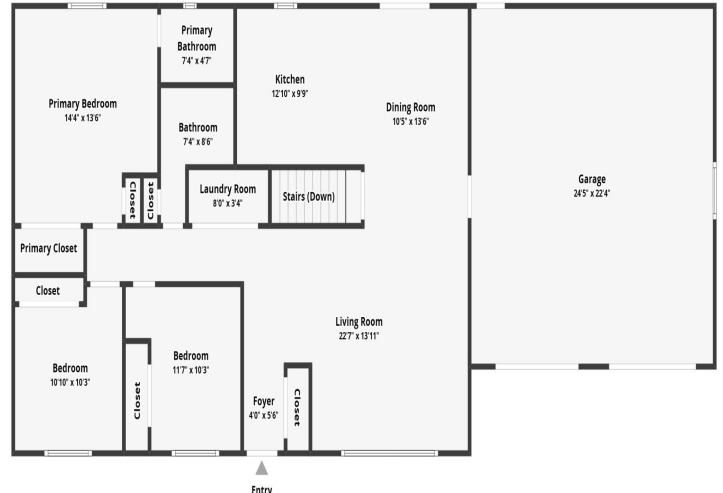
**Affinity**  
REAL ESTATE INC

**\$274,900**  
MLS 6758917 Residential  
109 Stephen Drive  
Fertile MN 56540

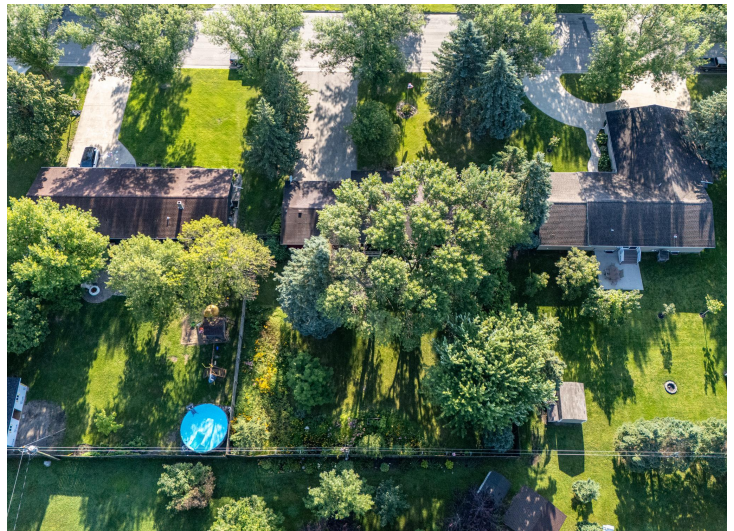




All dimensions are approximate and subject to independent verification.



All dimensions are approximate and subject to independent verification.

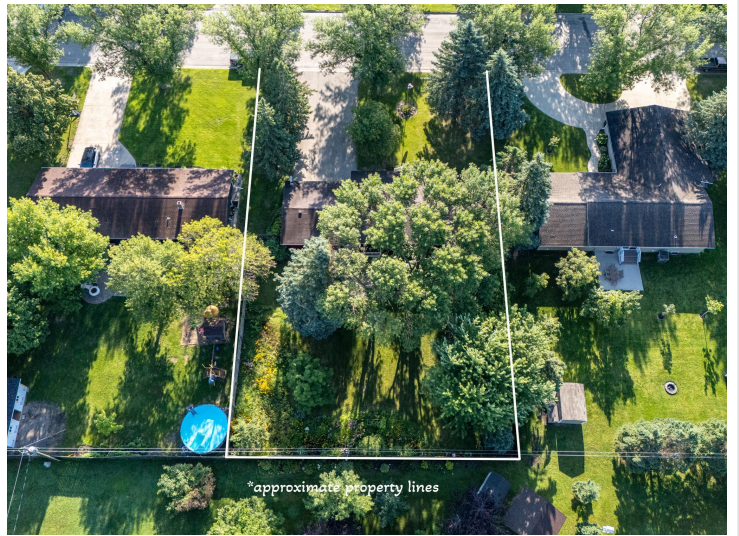


website: [www.AffinityRealEstate.com](http://www.AffinityRealEstate.com) | email: [info@affinityrealestate.com](mailto:info@affinityrealestate.com) | office: 218-237-3333 | fax: 218-237-3377



**\$274,900**  
 MLS 6758917 Residential  
 109 Stephen Drive  
 Fertile MN 56540





website: [www.AffinityRealEstate.com](http://www.AffinityRealEstate.com) | email: [info@affinityrealestate.com](mailto:info@affinityrealestate.com) | office: 218-237-3333 | fax: 218-237-3377

**Affinity**  
REAL ESTATE INC

**\$274,900**  
MLS 6758917 Residential  
109 Stephen Drive  
Fertile MN 56540





website: [www.AffinityRealEstate.com](http://www.AffinityRealEstate.com) | email: [info@affinityrealestate.com](mailto:info@affinityrealestate.com) | office: 218-237-3333 | fax:218-237-3377



**\$274,900**  
MLS 6758917 Residential  
109 Stephen Drive  
Fertile MN 56540