



MLS 6758926 Residential

**\$559,900**

2,230 sq ft  
3 bedrooms  
3 baths

11840 Lamon Road  
Bemidji MN 56601

Status: Active

#### Description:

Welcome to this private, custom-built Modern Craftsman home by BOD Construction—your dream retreat on 18.5 surveyed acres of hardwood forest and park-like grounds. Surrounded by maple and oak trees that burst with color each fall and bordering public/state trust land, this property is perfect for wildlife watchers, stargazers, and hunters alike. Enjoy a beautifully landscaped yard with manicured lawn, a large primitive fire pit, and wild raspberries and blackberries just steps from the door. Inside, the home offers easy one-level living with radiant in-floor heat throughout—including the spacious 1,237 sq ft, 3+ stall garage—and a highly efficient HVAC system to keep things cool in summer.

The open-concept layout features 9-ft sidewalls, vaulted ceilings, tile and LVT flooring, and a striking ledgestone wood-burning fireplace. The chef's kitchen is fully equipped with custom cabinetry, pull-out shelves, hidden garbage/recycle bins, a large lighted pantry, solid granite countertops, and a powerful commercial-grade exhaust hood. Just off the dining area, sliding patio doors lead to a 3-season screened Minnesota room—perfect for enjoying the outdoors even when it's rainy or buggy.


The owner's suite is designed for complete relaxation, with private patio access, a spa-style bath featuring a jetted tub, large tiled shower, private water closet, and a spacious walk-in closet reinforced as a safe room, storm shelter, complete with custom built-in shelving, drawers, and shoe storage.

The oversized garage includes built-in shelving, hot/cold water, two drains, and space for projects, a dog bath, or fish cleaning station. Additional highlights include Electrolux appliances, Delta faucets, 20" diagonal tile, Kichler lighting, and a woodshed stocked with seasoned firewood.

Located just minutes from Lake Bemidji, Bemidji State Park, Concordia Language Village, BSU, golf courses, and miles of ATV, bike, and snowmobile trails—this property is a true northern Minnesota gem.

#### Additional Details:

Year Built	2015
Lot Acres	18.18
Lot Dimensions	1350x700
Garage Stalls	4
School District	31
Taxes	\$5,370
Taxes with Assessments	\$5,370

1  Listed By: 2025  
218 Real Estate

#### Additional Features:

Affinity Real Estate Inc. participates in the Regional Multiple Listing Service of Minnesota, Inc. Broker Reciprocity (RM) program, allowing

us to display other broker's listings on our website. All properties are subject to prior sale, change or withdrawal.

#### Driving Directions:

From Paul and Babe (3rd st and Bemidji Ave) So on Bemidji Ave to 1st st. E on 1st st to Lake Ave N on Lake Ave to Power Dam 5.75 miles on power Dam to Co.27 on Co.27 2.5 miles to Lamon E on Lamon 1/4 mile home is on So side of rd



Call Affinity Real Estate

**218-237-3333**

[info@affinityrealestate.com](mailto:info@affinityrealestate.com)

Floor

11840 Lamon Road

Bemidji, MN 56601

MLS



Affinity Real Estate - 600 Park Avenue South - Park Rapids MN 56470





website: [www.AffinityRealEstate.com](http://www.AffinityRealEstate.com) | email: [info@affinityrealestate.com](mailto:info@affinityrealestate.com) | office: 218-237-3333 | fax: 218-237-3377

**Affinity**  
REAL ESTATE INC

**\$559,900**  
MLS 6758926 Residential  
11840 Lamon Road  
Bemidji MN 56601





website: [www.AffinityRealEstate.com](http://www.AffinityRealEstate.com) | email: [info@affinityrealestate.com](mailto:info@affinityrealestate.com) | office: 218-237-3333 | fax: 218-237-3377

**Affinity**  
REAL ESTATE INC

**\$559,900**  
MLS 6758926 Residential  
11840 Lamon Road  
Bemidji MN 56601





website: [www.AffinityRealEstate.com](http://www.AffinityRealEstate.com) | email: [info@affinityrealestate.com](mailto:info@affinityrealestate.com) | office: 218-237-3333 | fax: 218-237-3377



**\$559,900**  
MLS 6758926 Residential  
11840 Lamon Road  
Bemidji MN 56601



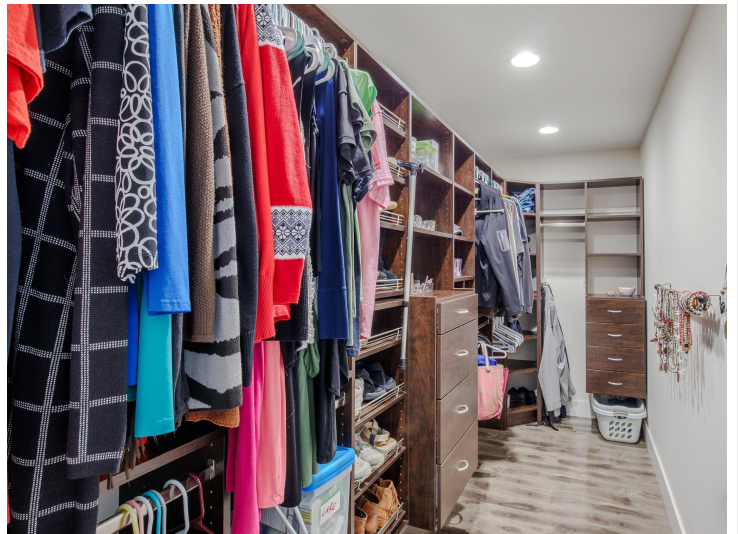


website: [www.AffinityRealEstate.com](http://www.AffinityRealEstate.com) | email: [info@affinityrealestate.com](mailto:info@affinityrealestate.com) | office: 218-237-3333 | fax: 218-237-3377



**\$559,900**  
 MLS 6758926 Residential  
 11840 Lamon Road  
 Bemidji MN 56601



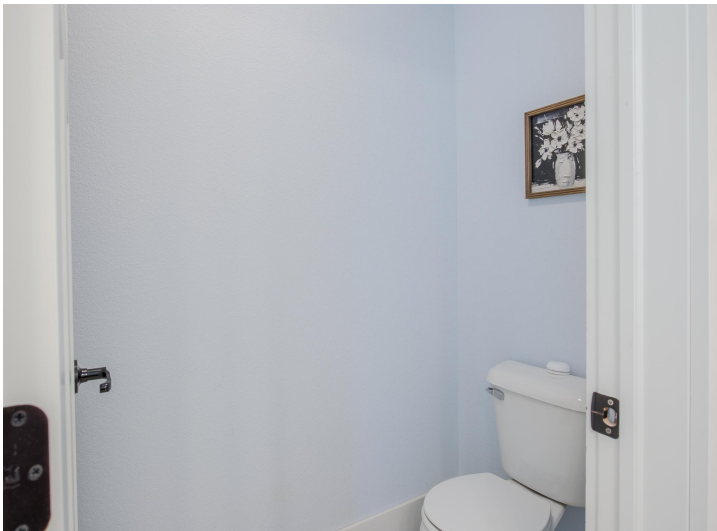


website: [www.AffinityRealEstate.com](http://www.AffinityRealEstate.com) | email: [info@affinityrealestate.com](mailto:info@affinityrealestate.com) | office: 218-237-3333 | fax: 218-237-3377

**Affinity**  
REAL ESTATE INC

**\$559,900**  
MLS 6758926 Residential  
11840 Lamon Road  
Bemidji MN 56601





website: [www.AffinityRealEstate.com](http://www.AffinityRealEstate.com) | email: [info@affinityrealestate.com](mailto:info@affinityrealestate.com) | office: 218-237-3333 | fax: 218-237-3377

**Affinity**  
REAL ESTATE INC

**\$559,900**  
MLS 6758926 Residential  
11840 Lamon Road  
Bemidji MN 56601





website: [www.AffinityRealEstate.com](http://www.AffinityRealEstate.com) | email: [info@affinityrealestate.com](mailto:info@affinityrealestate.com) | office: 218-237-3333 | fax: 218-237-3377

**Affinity**  
REAL ESTATE INC

**\$559,900**  
MLS 6758926 Residential  
11840 Lamon Road  
Bemidji MN 56601



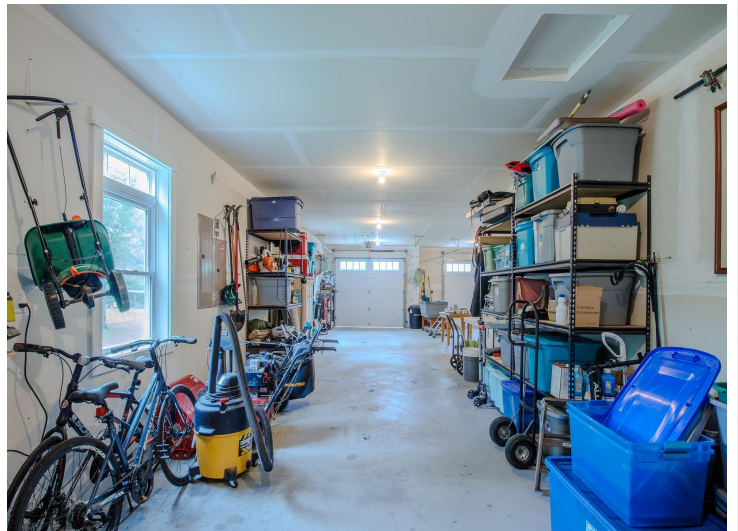
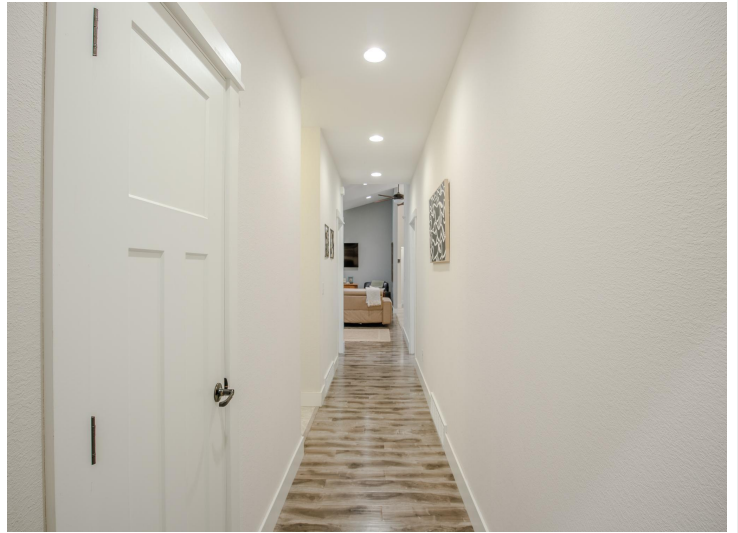


website: [www.AffinityRealEstate.com](http://www.AffinityRealEstate.com) | email: [info@affinityrealestate.com](mailto:info@affinityrealestate.com) | office: 218-237-3333 | fax: 218-237-3377



**\$559,900**  
MLS 6758926 Residential  
11840 Lamon Road  
Bemidji MN 56601





website: [www.AffinityRealEstate.com](http://www.AffinityRealEstate.com) | email: [info@affinityrealestate.com](mailto:info@affinityrealestate.com) | office: 218-237-3333 | fax: 218-237-3377



**\$559,900**  
 MLS 6758926 Residential  
 11840 Lamon Road  
 Bemidji MN 56601



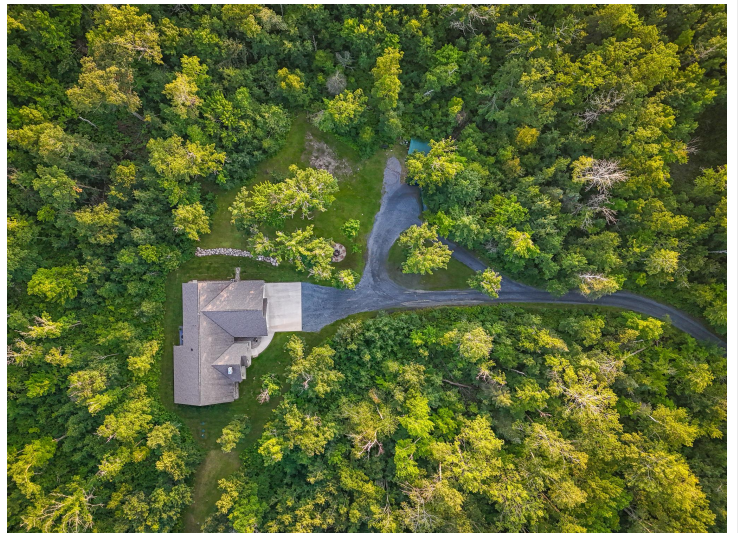
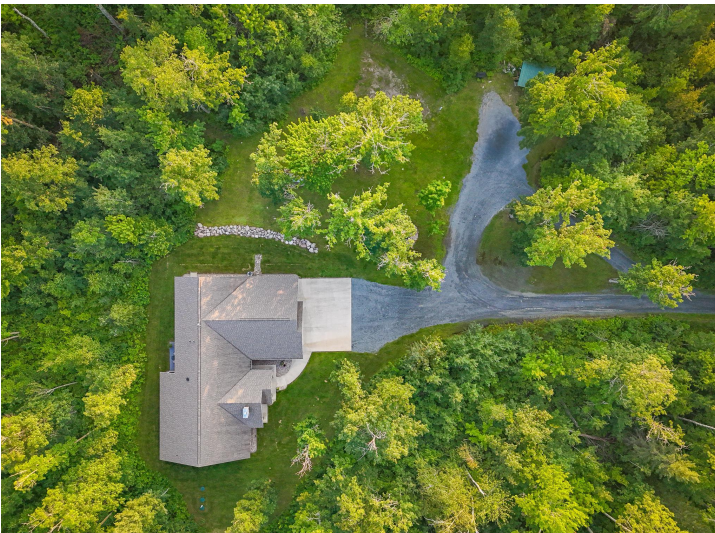


website: [www.AffinityRealEstate.com](http://www.AffinityRealEstate.com) | email: [info@affinityrealestate.com](mailto:info@affinityrealestate.com) | office: 218-237-3333 | fax: 218-237-3377

**Affinity**  
REAL ESTATE INC

**\$559,900**  
MLS 6758926 Residential  
11840 Lamon Road  
Bemidji MN 56601





website: [www.AffinityRealEstate.com](http://www.AffinityRealEstate.com) | email: [info@affinityrealestate.com](mailto:info@affinityrealestate.com) | office: 218-237-3333 | fax: 218-237-3377



**\$559,900**  
 MLS 6758926 Residential  
 11840 Lamon Road  
 Bemidji MN 56601





Floor 1

*Floor plans/tour cannot be used for building or design purposes. Sizes and dimensions are approximate.*

website: [www.AffinityRealEstate.com](http://www.AffinityRealEstate.com) | email: [info@affinityrealestate.com](mailto:info@affinityrealestate.com) | office: 218-237-3333 | fax: 218-237-3377



**\$559,900**  
MLS 6758926 Residential  
11840 Lamon Road  
Bemidji MN 56601