



MLS 6759035 Lake Home

\$410,000

600 sq ft
0 bedrooms
1 baths

19617 Johnson Drive
Audubon MN 56511

Waterfront: Little Cormorant

Status: Pending

Description:

Shouse on Little Cormorant! Charming efficiency-style shouse on 2.3(a) acres with 170(a) feet of shoreline on Little Cormorant Lake—well-known for excellent fishing and recreation, and close to the FM and Detroit Lakes communities. Thoughtfully completed in 2021 with 10' ceilings, an open-concept living area, kitchenette with live-edge wood countertops, and a spacious 3/4 bath. Perfect for weekend getaways or low-maintenance lake living. Enjoy the concrete patio shaded under the sail-cloth pergola, ideal for relaxing or entertaining with stunning lake views. At the water's edge, you'll find a sandy beach, dock, and room for your pontoon or fishing boat—ready for immediate lake fun. A canopy of mature trees shelters a large area by the water's edge that's perfect for a firepit, and for enjoying a bit of shade on hot summer days. The gently sloping lot offers privacy, beautiful scenery, and plenty of room - A unique opportunity to enjoy lakefront living *right now* while planning for future potential.

Additional Details:

Year Built	2021
Lot Acres	2.32
Lot Dimensions	615x170x580x170
Garage Stalls	2
School District	2889
Taxes	\$1,131
Taxes with Assessments	\$2,594
Tax Year	2025

Additional Features:

Basement: Other, Concrete **Fuel:** Electric **Garage:** 2 **Heat:** Baseboard **Sewer:** Holding Tank **Water:** Well **Air Conditioning:** Window Unit(s)

Driving Directions:



Listed By:
Park Co., REALTORS®

Affinity Real Estate Inc. participates in the Regional Multiple Listing Service of Minnesota, Inc Broker Reciprocity (sm) program, allowing us to display other broker's listings on our website. All properties are subject to prior sale, change or withdrawal.



Call Affinity Real Estate

218-237-3333

info@affinityrealestate.com



Affinity Real Estate - 600 Park Avenue South - Park Rapids MN 56470



website: www.AffinityRealEstate.com | email: info@affinityrealestate.com | office: 218-237-3333 | fax: 218-237-3377

Affinity
REAL ESTATE INC

\$410,000
MLS 6759035 Lake Home
19617 Johnson Drive
Audubon MN 56511



website: www.AffinityRealEstate.com | email: info@affinityrealestate.com | office: 218-237-3333 | fax: 218-237-3377

Affinity
REAL ESTATE INC

\$410,000
MLS 6759035 Lake Home
19617 Johnson Drive
Audubon MN 56511



website: www.AffinityRealEstate.com | email: info@affinityrealestate.com | office: 218-237-3333 | fax: 218-237-3377

Affinity
REAL ESTATE INC

\$410,000
MLS 6759035 Lake Home
19617 Johnson Drive
Audubon MN 56511



website: www.AffinityRealEstate.com | email: info@affinityrealestate.com | office: 218-237-3333 | fax: 218-237-3377

Affinity
REAL ESTATE INC

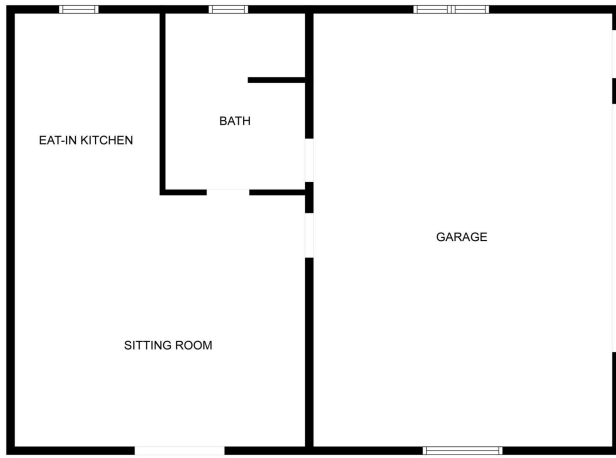
\$410,000
MLS 6759035 Lake Home
19617 Johnson Drive
Audubon MN 56511



website: www.AffinityRealEstate.com | email: info@affinityrealestate.com | office: 218-237-3333 | fax: 218-237-3377

Affinity
REAL ESTATE INC

\$410,000
MLS 6759035 Lake Home
19617 Johnson Drive
Audubon MN 56511



FLOOR PLAN CREATED BY CUBICASA APP. MEASUREMENTS DEEMED HIGHLY RELIABLE BUT NOT GUARANTEED.

website: www.AffinityRealEstate.com | email: info@affinityrealestate.com | office: 218-237-3333 | fax:218-237-3377



\$410,000

MLS 6759035 Lake Home
19617 Johnson Drive
Audubon MN 56511