



MLS 6759222 Lake Home

\$429,900

1,872 sq ft
3 bedrooms
3 baths

22560 Height Of Land Drive
Detroit Lakes MN 56501

Waterfront: Height of Land

Status: Active

Description:

This Height Of Land Lake property has so much to offer! Starting with 6.9 +/- acres and 339' of lake frontage, the outside spaces to enjoy are sure to impress. The driveway will wind you through a mature mix of trees and open up to a park-like setting as you approach the lake. The year-round cabin offers 3 bedrooms, 3 bathrooms, a spacious living room, new furnace system, lakeside dining room and kitchen to take in the beautiful sunsets. Upstairs you will find commanding views of the lake from the private owner's suite with ¾ bath. Complete with a full unfinished walk out basement with tons of storage space and allows for easy access to the lake. Height of Land Lake offers Nearly 4,000 acres of water to explore and is located between Detroit Lakes and Park Rapids where you can find endless opportunities for outdoor fun. This home is ready for you vision and improvements to make it your own!

Additional Details:

Year Built	1966
Lot Acres	6.9
Lot Dimensions	Irregular
Garage Stalls	2
School District	23
Taxes	\$2,674
Taxes with Assessments	\$2,714
Tax Year	2025

Additional Features:

Fuel: Electric, Oil **Heat:** Dual, Forced Air

Driving Directions:

From 71/34 in Park Rapids: Follow the HWY 34 detour to Osage, continue west on 34 for 16.2 miles to a right onto E Height Of Land Dr.

From Detroit Lakes: Take Hwy 34 East for 17 Miles to a Left onto E Height Of Land Dr.



Listed By:
Wolff & Simon Real Estate

Affinity Real Estate Inc. participates in the Regional Multiple Listing Service of Minnesota, Inc Broker Reciprocity (sm) program, allowing us to display other broker's listings on our website. All properties are subject to prior sale, change or withdrawal.



Call Affinity Real Estate

218-237-3333

info@affinityrealestate.com



Affinity Real Estate - 600 Park Avenue South - Park Rapids MN 56470



website: www.AffinityRealEstate.com | email: info@affinityrealestate.com | office: 218-237-3333 | fax:218-237-3377



\$429,900
MLS 6759222 Lake Home
22560 Height Of Land Drive
Detroit Lakes MN 56501



website: www.AffinityRealEstate.com | email: info@affinityrealestate.com | office: 218-237-3333 | fax:218-237-3377

Affinity
REAL ESTATE INC

\$429,900
MLS 6759222 Lake Home
22560 Height Of Land Drive
Detroit Lakes MN 56501



website: www.AffinityRealEstate.com | email: info@affinityrealestate.com | office: 218-237-3333 | fax:218-237-3377



\$429,900
MLS 6759222 Lake Home
22560 Height Of Land Drive
Detroit Lakes MN 56501



website: www.AffinityRealEstate.com | email: info@affinityrealestate.com | office: 218-237-3333 | fax:218-237-3377



\$429,900
MLS 6759222 Lake Home
22560 Height Of Land Drive
Detroit Lakes MN 56501



website: www.AffinityRealEstate.com | email: info@affinityrealestate.com | office: 218-237-3333 | fax:218-237-3377



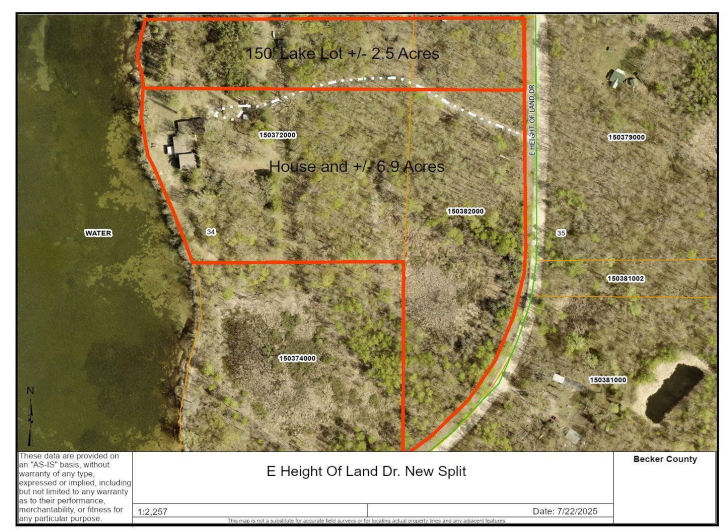
\$429,900
MLS 6759222 Lake Home
22560 Height Of Land Drive
Detroit Lakes MN 56501



website: www.AffinityRealEstate.com | email: info@affinityrealestate.com | office: 218-237-3333 | fax:218-237-3377



\$429,900
MLS 6759222 Lake Home
22560 Height Of Land Drive
Detroit Lakes MN 56501



website: www.AffinityRealEstate.com | email: info@affinityrealestate.com | office: 218-237-3333 | fax:218-237-3377



\$429,900
 MLS 6759222 Lake Home
 22560 Height Of Land Drive
 Detroit Lakes MN 56501



<small>These data are provided on an "AS-IS" basis, without warranty of any type, expressed or implied, including but not limited to any warranty as to their performance, merchantability, or fitness for any particular purpose.</small>	22560 E Height Of Land Drive	Becker County
	1:2,257	Date: 7/22/2025

website: www.AffinityRealEstate.com | email: info@affinityrealestate.com | office: 218-237-3333 | fax:218-237-3377



\$429,900
 MLS 6759222 Lake Home
 22560 Height Of Land Drive
 Detroit Lakes MN 56501