



MLS 6759227 Residential

\$699,900

2,434 sq ft
4 bedrooms
3 baths

25318 County Highway 13
Audubon MN 56511

Status: Active

Description:

Welcome to your dream country retreat! This beautifully maintained four-bedroom, three-bath farmhouse sits on 40 acres, making it the perfect property for horse enthusiasts, hobby farmers, or anyone looking for peaceful rural living without sacrificing modern conveniences. Ride year-round in the indoor arena or train and exercise in the outdoor arena. The stables include multiple stalls, a tack room, and direct access to pastures. The pastures are equipped with an automatic waterer, making it easy to manage horses or livestock. Inside the home you will find classic farmhouse charm paired with modern updates. The kitchen and large living areas are warm and inviting, complete with hardwood floors that add a comforting touch. There is a primary suite with a private bath, three additional bedrooms, 2 additional bathrooms and a large family room that offer plenty of room for family or guests. Enjoy the panoramic views from the covered porch or sit under the stars on the maintenance free deck off the sunroom. In addition to the home and equestrian facilities, the property includes a large shop with an attached office—ideal for a home business, workshop, or extra storage. There are multiple outbuildings for hay and equipment storage, along with ample space for RV and trailer parking. Whether you're seeking a working ranch or a private country getaway, this one-of-a-kind property is ready for you to call it home.

Additional Details:

Year Built	1895
Lot Acres	40.28
Lot Dimensions	40.28 Acres
Garage Stalls	3
School District	2889
Taxes	\$406
Taxes with Assessments	\$406
Tax Year	2025

Additional Features:

Fuel: Electric, Propane, Wood **Heat:** Baseboard, Boiler, Forced Air

Driving Directions:

From US Highway 10 head north on Co Hwy 13 (4th St.) in Audubon. At the stop sign, turn left to continue on Co Hwy 13 about 5 miles to address on left.



Listed By:
eXp Realty

Affinity Real Estate Inc. participates in the Regional Multiple Listing Service of Minnesota, Inc Broker Reciprocity (sm) program, allowing us to display other broker's listings on our website. All properties are subject to prior sale, change or withdrawal.



Call Affinity Real Estate

218-237-3333

info@affinityrealestate.com



Affinity Real Estate - 600 Park Avenue South - Park Rapids MN 56470

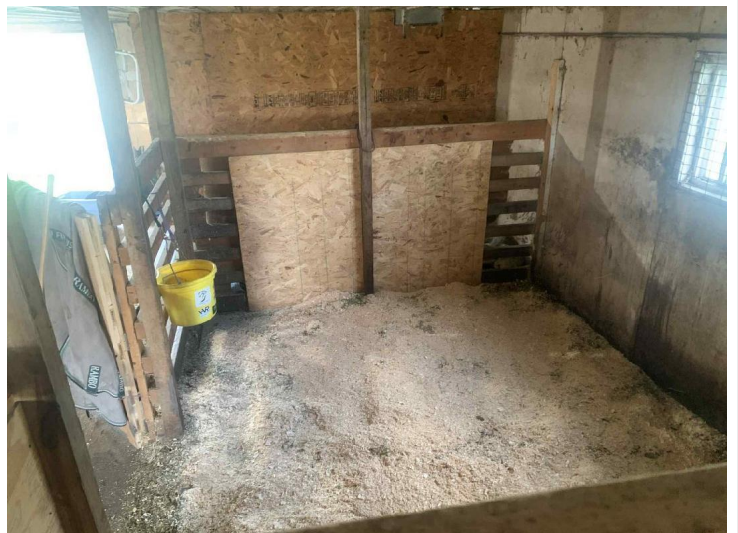


website: www.AffinityRealEstate.com | email: info@affinityrealestate.com | office: 218-237-3333 | fax: 218-237-3377

Affinity
REAL ESTATE INC

\$699,900

MLS 6759227 Residential
25318 County Highway 13
Audubon MN 56511



website: www.AffinityRealEstate.com | email: info@affinityrealestate.com | office: 218-237-3333 | fax: 218-237-3377



\$699,900

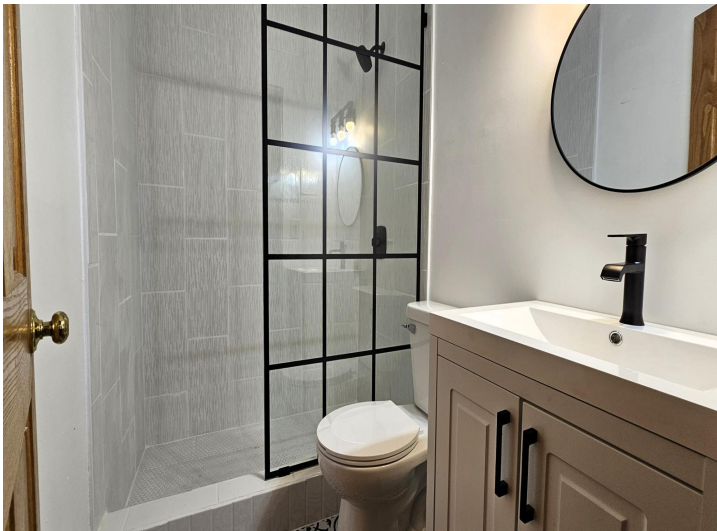
MLS 6759227 Residential
25318 County Highway 13
Audubon MN 56511



website: www.AffinityRealEstate.com | email: info@affinityrealestate.com | office: 218-237-3333 | fax: 218-237-3377

Affinity
REAL ESTATE INC

\$699,900
MLS 6759227 Residential
25318 County Highway 13
Audubon MN 56511



website: www.AffinityRealEstate.com | email: info@affinityrealestate.com | office: 218-237-3333 | fax: 218-237-3377

Affinity
REAL ESTATE INC

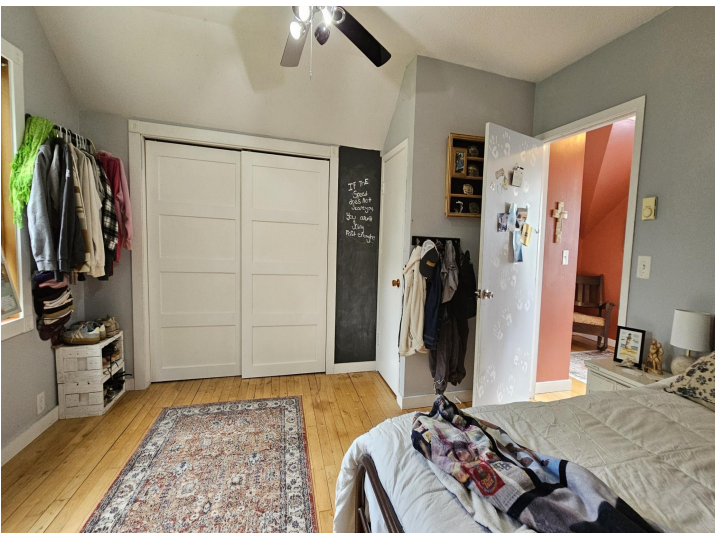
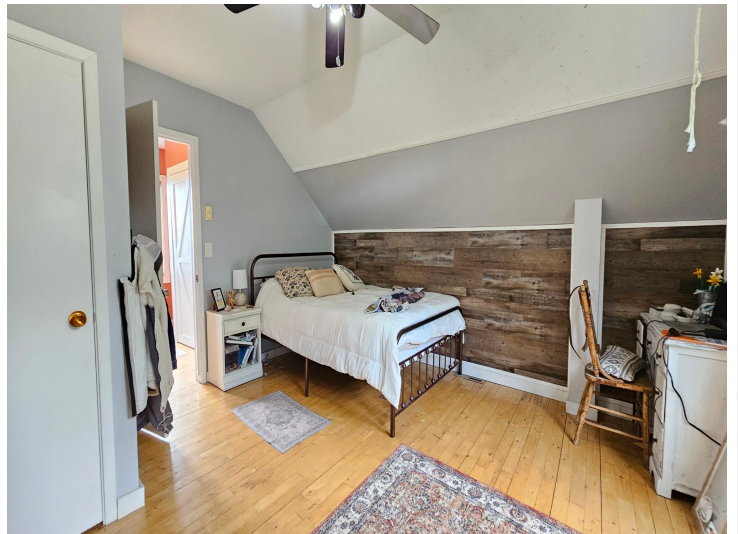
\$699,900
MLS 6759227 Residential
25318 County Highway 13
Audubon MN 56511



website: www.AffinityRealEstate.com | email: info@affinityrealestate.com | office: 218-237-3333 | fax: 218-237-3377

Affinity
REAL ESTATE INC

\$699,900
MLS 6759227 Residential
25318 County Highway 13
Audubon MN 56511



website: www.AffinityRealEstate.com | email: info@affinityrealestate.com | office: 218-237-3333 | fax: 218-237-3377

Affinity
REAL ESTATE INC

\$699,900
MLS 6759227 Residential
25318 County Highway 13
Audubon MN 56511



website: www.AffinityRealEstate.com | email: info@affinityrealestate.com | office: 218-237-3333 | fax: 218-237-3377

Affinity
REAL ESTATE INC

\$699,900
MLS 6759227 Residential
25318 County Highway 13
Audubon MN 56511

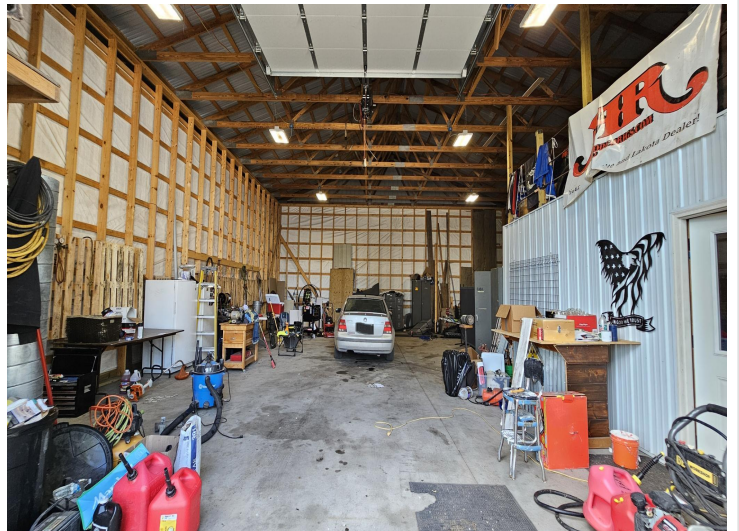


website: www.AffinityRealEstate.com | email: info@affinityrealestate.com | office: 218-237-3333 | fax: 218-237-3377



\$699,900

MLS 6759227 Residential
25318 County Highway 13
Audubon MN 56511



website: www.AffinityRealEstate.com | email: info@affinityrealestate.com | office: 218-237-3333 | fax: 218-237-3377

Affinity
REAL ESTATE INC

\$699,900

MLS 6759227 Residential
25318 County Highway 13
Audubon MN 56511



website: www.AffinityRealEstate.com | email: info@affinityrealestate.com | office: 218-237-3333 | fax: 218-237-3377

Affinity
REAL ESTATE INC

\$699,900
MLS 6759227 Residential
25318 County Highway 13
Audubon MN 56511



website: www.AffinityRealEstate.com | email: info@affinityrealestate.com | office: 218-237-3333 | fax: 218-237-3377



\$699,900
 MLS 6759227 Residential
 25318 County Highway 13
 Audubon MN 56511