



MLS 6759391 Residential

\$199,900

1,992 sq ft
4 bedrooms
2 baths

636 Labudde Avenue
Bagley MN 56621

Status: Active

Description:

Like-new home but at a used price!!! 4 bdrm-1 3/4 bath home that has been completely renovated on the north end of Bagley near the golf course! All new windows, vinyl and LP Smart siding, new kitchen/appliances, bathroom with custom tile work, all new sheetrock and flooring!! The home has a very welcoming layout with the kitchen/DR/LR all together, and 2 bedrooms and a bath on each level. Economical natural gas heat, freshly laid sod, cobblestone walkway into the home. This renovation turned out really good and is a great value!!!

Additional Details:

Year Built	1973
Lot Acres	0.17
Lot Dimensions	50x150
Garage Stalls	2
School District	162
Taxes	\$822
Taxes with Assessments	\$822
Tax Year	2025

Additional Features:

Basement: None **Fuel:** Electric, Natural Gas **Garage:** 2 **Heat:** Baseboard, Forced Air **Sewer:** City Sewer/Connected **Water:** City Water/Connected **Air Conditioning:** Window Unit(s)

Driving Directions:

From stoplights in Bagley, north on #92 1/2 mile, right on 7th St, and follow to LaBudde Ave, go right, and it is the second home on the left.



Listed By:
Realty Experts, LLC

Affinity Real Estate Inc. participates in the Regional Multiple Listing Service of Minnesota, Inc Broker Reciprocity (sm) program, allowing us to display other broker's listings on our website. All properties are subject to prior sale, change or withdrawal.



Call Affinity Real Estate

218-237-3333

info@affinityrealestate.com



Affinity Real Estate - 600 Park Avenue South - Park Rapids MN 56470



website: www.AffinityRealEstate.com | email: info@affinityrealestate.com | office: 218-237-3333 | fax: 218-237-3377



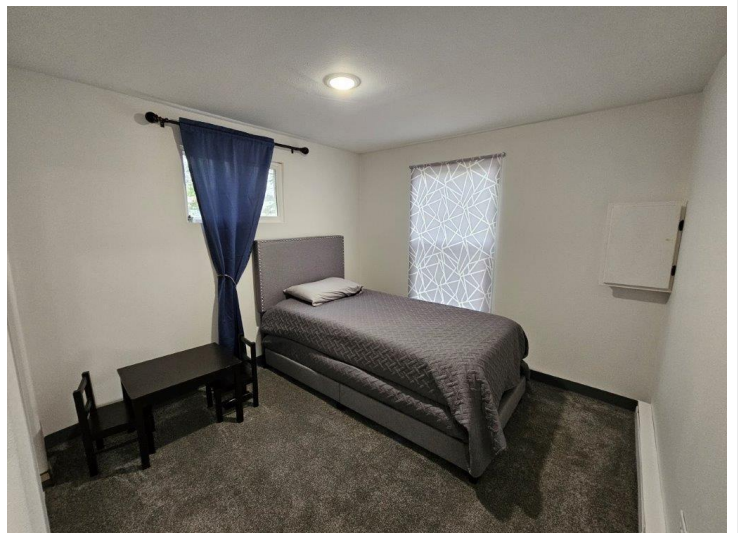
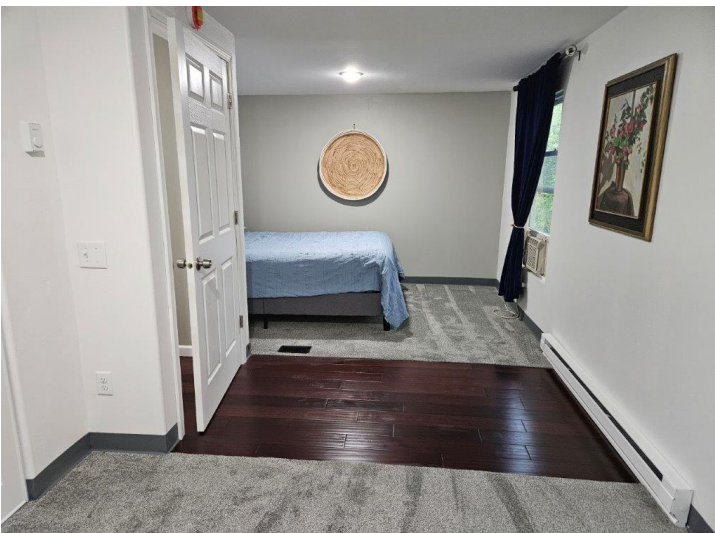
\$199,900
 MLS 6759391 Residential
 636 Labudde Avenue
 Bagley MN 56621



website: www.AffinityRealEstate.com | email: info@affinityrealestate.com | office: 218-237-3333 | fax: 218-237-3377

Affinity
REAL ESTATE INC

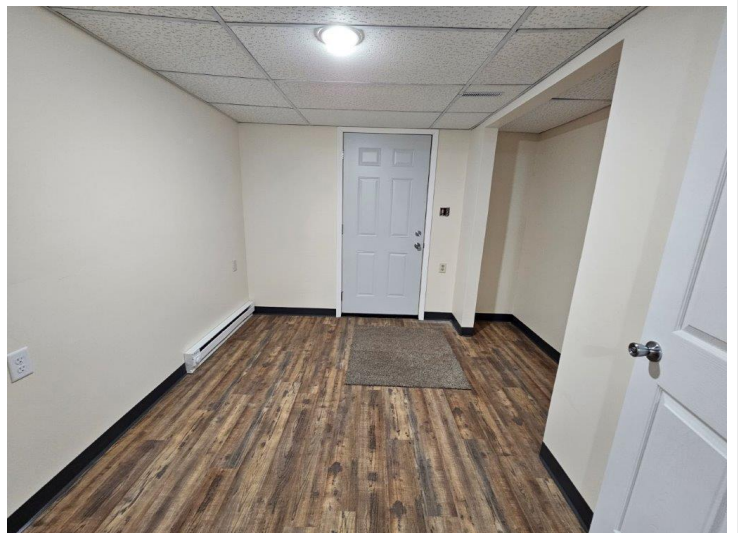
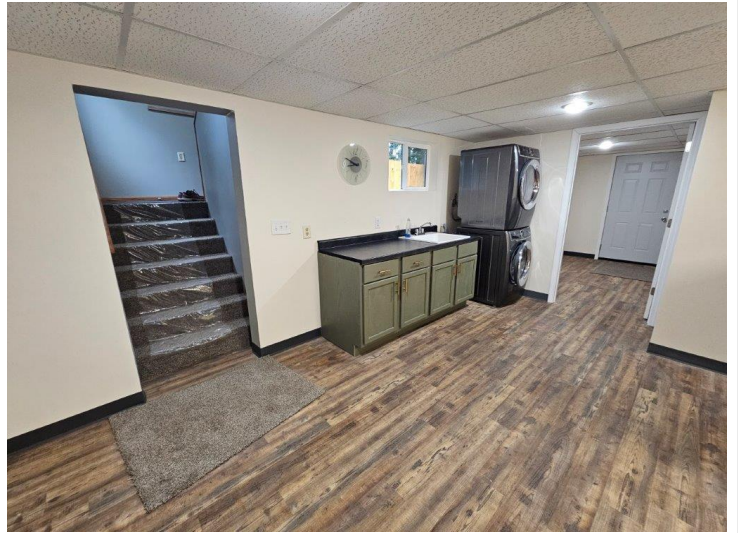
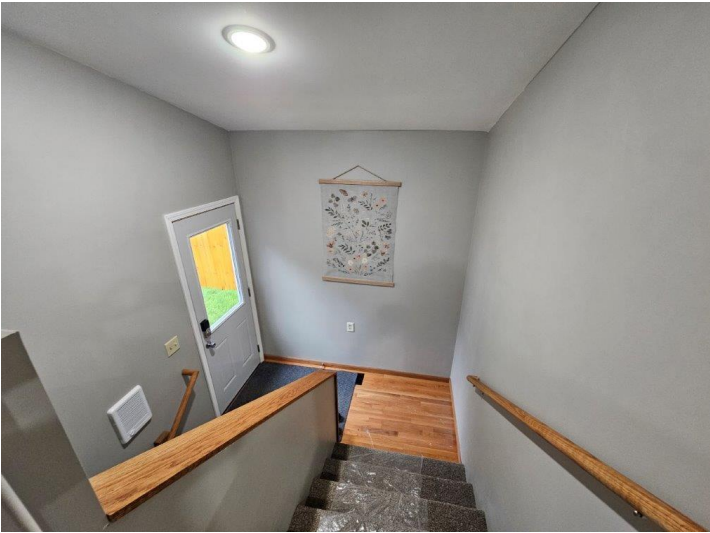
\$199,900
MLS 6759391 Residential
636 Labudde Avenue
Bagley MN 56621



website: www.AffinityRealEstate.com | email: info@affinityrealestate.com | office: 218-237-3333 | fax: 218-237-3377

Affinity
REAL ESTATE INC

\$199,900
MLS 6759391 Residential
636 Labudde Avenue
Bagley MN 56621



website: www.AffinityRealEstate.com | email: info@affinityrealestate.com | office: 218-237-3333 | fax: 218-237-3377



\$199,900
MLS 6759391 Residential
636 Labudde Avenue
Bagley MN 56621