



MLS 6759496 Lake Home

\$379,900

1,194 sq ft
3 bedrooms
1 baths

17348 Horse Shoe Lane
Bagley MN 56621

Waterfront: Long Lost

Status: Active

Description:

This 6.5 Acre Lot has 250 feet of Long Lost Lake waterfront access with private dock - perfect for fishing and boating! Less than a 2-hour drive from the Fargo/Moorhead area this is the perfect escape. Lake is known for great fishing, and water activities. The home comes fully furnished and is ready for you to move in stress free on day 1. Built in 2011 and lightly used, the house is in excellent shape and ready for you to enjoy the great outdoors in comfort. The main bedroom and bathroom are located on the first level with the second and third bedrooms along with a lofted area on the upper level. All utilities are ready to go here with Heat, well water, city electric, and septic hooked up. Make sure to check out the Virtual Home Tour and schedule your private showing today!

Additional Details:

Year Built	2011
Lot Acres	6.5
Lot Dimensions	Irregular
School District	2311
Taxes	\$1,604
Taxes with Assessments	\$1,604
Tax Year	2024

Additional Features:

Basement: Crawl Space **Fuel:** Natural Gas **Heat:** Forced Air **Sewer:** Septic System Compliant - Yes **Water:** Well **Air Conditioning:** None

Driving Directions:

Turn off Ectrion Trail onto Horseshoe Lane.



Listed By:
DRG

Affinity Real Estate Inc. participates in the Regional Multiple Listing Service of Minnesota, Inc Broker Reciprocity (sm) program, allowing us to display other broker's listings on our website. All properties are subject to prior sale, change or withdrawal.



Call Affinity Real Estate

218-237-3333

info@affinityrealestate.com



Affinity Real Estate - 600 Park Avenue South - Park Rapids MN 56470



website: www.AffinityRealEstate.com | email: info@affinityrealestate.com | office: 218-237-3333 | fax: 218-237-3377

Affinity
REAL ESTATE INC

\$379,900
MLS 6759496 Lake Home
17348 Horse Shoe Lane
Bagley MN 56621



website: www.AffinityRealEstate.com | email: info@affinityrealestate.com | office: 218-237-3333 | fax: 218-237-3377

Affinity
REAL ESTATE INC

\$379,900
MLS 6759496 Lake Home
17348 Horse Shoe Lane
Bagley MN 56621



website: www.AffinityRealEstate.com | email: info@affinityrealestate.com | office: 218-237-3333 | fax: 218-237-3377

Affinity
REAL ESTATE INC

\$379,900
MLS 6759496 Lake Home
17348 Horse Shoe Lane
Bagley MN 56621



website: www.AffinityRealEstate.com | email: info@affinityrealestate.com | office: 218-237-3333 | fax: 218-237-3377

Affinity
REAL ESTATE INC

\$379,900
MLS 6759496 Lake Home
17348 Horse Shoe Lane
Bagley MN 56621

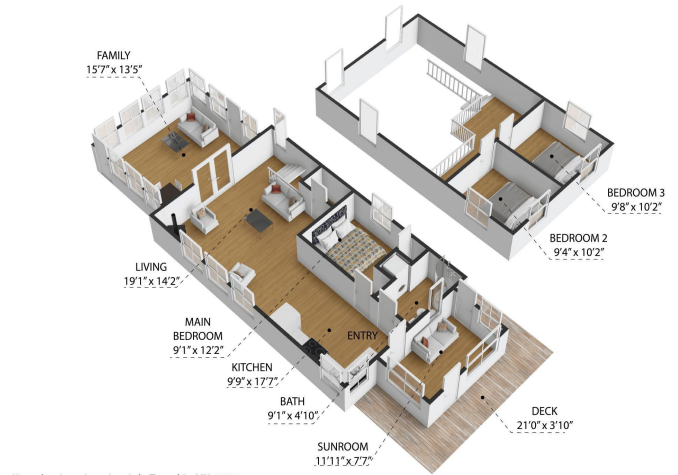


website: www.AffinityRealEstate.com | email: info@affinityrealestate.com | office: 218-237-3333 | fax: 218-237-3377

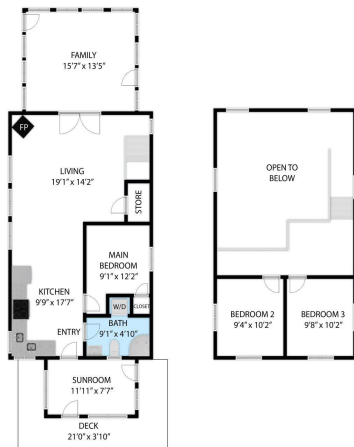
Affinity
REAL ESTATE INC

\$379,900

MLS 6759496 Lake Home
17348 Horse Shoe Lane
Bagley MN 56621



Horseshoe Lane, Long Lost Lake Township, MN, 56621
 TOTAL APPROX. FLOOR AREA: 1,194 SQ. FT.
 While every effort has been made to ensure the accuracy of the floor plan contained herein, measurements of doors, windows, stairs and any other items are approximate and no responsibility is taken for any error, omission, or misstatement.
 This plan is for illustrative purposes only and should be used as such by any prospective purchaser.



Horseshoe Lane, Long Lost Lake Township, MN, 56621
 TOTAL APPROX. FLOOR AREA: 1,194 SQ. FT.
 While every effort has been made to ensure the accuracy of the floor plan contained herein, measurements of doors, windows, stairs and any other items are approximate and no responsibility is taken for any error, omission, or misstatement.
 This plan is for illustrative purposes only and should be used as such by any prospective purchaser.



website: www.AffinityRealEstate.com | email: info@affinityrealestate.com | office: 218-237-3333 | fax: 218-237-3377

Affinity
 REAL ESTATE INC

\$379,900
 MLS 6759496 Lake Home
 17348 Horse Shoe Lane
 Bagley MN 56621



website: www.AffinityRealEstate.com | email: info@affinityrealestate.com | office: 218-237-3333 | fax: 218-237-3377



\$379,900
 MLS 6759496 Lake Home
 17348 Horse Shoe Lane
 Bagley MN 56621



website: www.AffinityRealEstate.com | email: info@affinityrealestate.com | office: 218-237-3333 | fax: 218-237-3377



\$379,900
 MLS 6759496 Lake Home
 17348 Horse Shoe Lane
 Bagley MN 56621



website: www.AffinityRealEstate.com | email: info@affinityrealestate.com | office: 218-237-3333 | fax:218-237-3377



\$379,900
MLS 6759496 Lake Home
17348 Horse Shoe Lane
Bagley MN 56621