

MLS 6759516 Lake Land

**\$350,000**

#### Description:

Discover 80 acres of prime tillable ground with Moran Creek bordering the west side, bringing natural charm and water access. This fertile land has successfully grown soybeans, corn, alfalfa, and hay in past seasons and is ready for your next crop. Ideal location to build your dream hobby farm, use as pasture, or lease the productive fields for income.

#### Additional Details:

Lot Acres	80
Lot Dimensions	1300x2600x1300x2600
School District	2170
Taxes	\$384
Taxes with Assessments	\$384
Tax Year	2024

#### Additional Features:

#### Driving Directions:

From Staples, go south on State 210 to left on CR 21 to right on CR 24 to left on Red Oak Rd, property on the right side of road.



Listed By:  
eXp Realty

Affinity Real Estate Inc. participates in the Regional Multiple Listing Service of Minnesota, Inc Broker Reciprocity (sm) program, allowing us to display other broker's listings on our website. All properties are subject to prior sale, change or withdrawal.



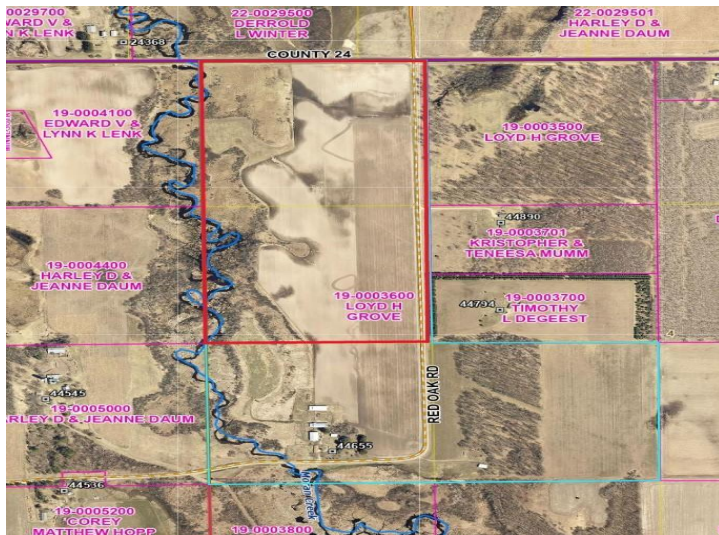
Call Affinity Real Estate

**218-237-3333**

[info@affinityrealestate.com](mailto:info@affinityrealestate.com)



Affinity Real Estate - 600 Park Avenue South - Park Rapids MN 56470



website: [www.AffinityRealEstate.com](http://www.AffinityRealEstate.com) | email: [info@affinityrealestate.com](mailto:info@affinityrealestate.com) | office: 218-237-3333 | fax: 218-237-3377



**\$350,000**

MLS 6759516 Lake Land  
TBD Red Oak Road  
Staples MN 56479