



MLS 6759577 Residential

\$389,900

2,650 sq ft
4 bedrooms
3 baths

2338 Meadow Lane
Hawley MN 56549

Status: Active

Description:

Beautiful 4 bedroom home for sale in the growing Hawley Community! Located in a desirable new development, this spacious 4-bedroom, 3-bathroom home built in 2005 offers comfort, convenience, and room to grow. Situated on a large corner lot with a full sprinkler system, this property is perfect for families and entertaining. Enjoy the warmth and functionality of a 3-stall heated garage, a walk-out basement, and a two-year-old furnace for peace of mind. The home features newer appliances, an open floor plan, and a nearby walking path leading to schools and parks. Don't miss your chance to live in one of Hawley's most sought-after and expanding neighborhoods! Key features of this property include: 4 bedrooms, 3 bathrooms, built in 2005, large corner lot with sprinkler system, 3-stall heated garage, walk-out basement, located in a growing, friendly community. Schedule a showing with your favorite realtor today!

Additional Details:

Year Built	2005
Lot Acres	0.51
Lot Dimensions	Irr
Garage Stalls	3
School District	150
Taxes	\$4,895
Taxes with Assessments	\$4,930
Tax Year	2025

Additional Features:

Basement: Finished, Concrete **Fuel:** Natural Gas **Garage:** 3 **Heat:** Forced Air **Sewer:** City Sewer/Connected **Water:** City Water/Connected **Air Conditioning:** Central Air

Driving Directions:

From Hwy 10, go north on 15th St, turn east onto Meadow Lane, first house on the left.



Listed By:
REALTY XPERTS

Affinity Real Estate Inc. participates in the Regional Multiple Listing Service of Minnesota, Inc Broker Reciprocity (sm) program, allowing us to display other broker's listings on our website. All properties are subject to prior sale, change or withdrawal.



Call Affinity Real Estate

218-237-3333

info@affinityrealestate.com



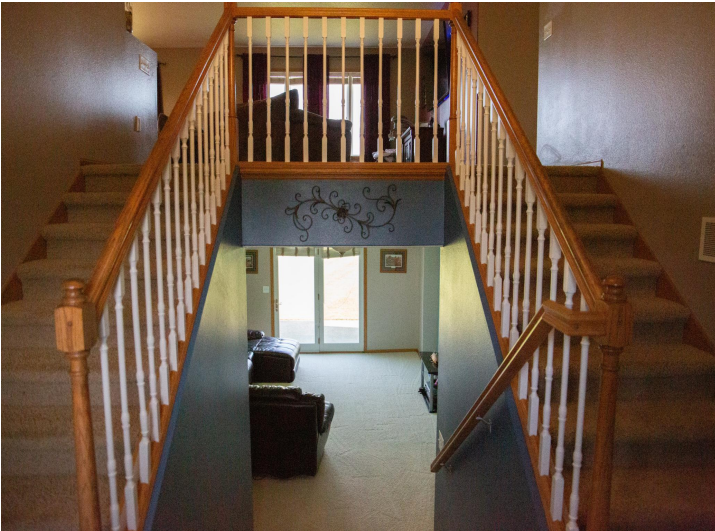
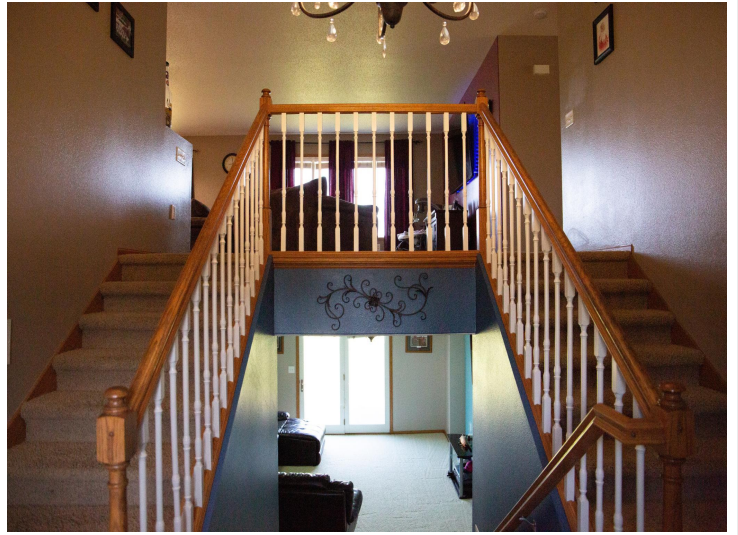
Affinity Real Estate - 600 Park Avenue South - Park Rapids MN 56470



website: www.AffinityRealEstate.com | email: info@affinityrealestate.com | office: 218-237-3333 | fax: 218-237-3377



\$389,900
MLS 6759577 Residential
2338 Meadow Lane
Hawley MN 56549



website: www.AffinityRealEstate.com | email: info@affinityrealestate.com | office: 218-237-3333 | fax: 218-237-3377

Affinity
REAL ESTATE INC

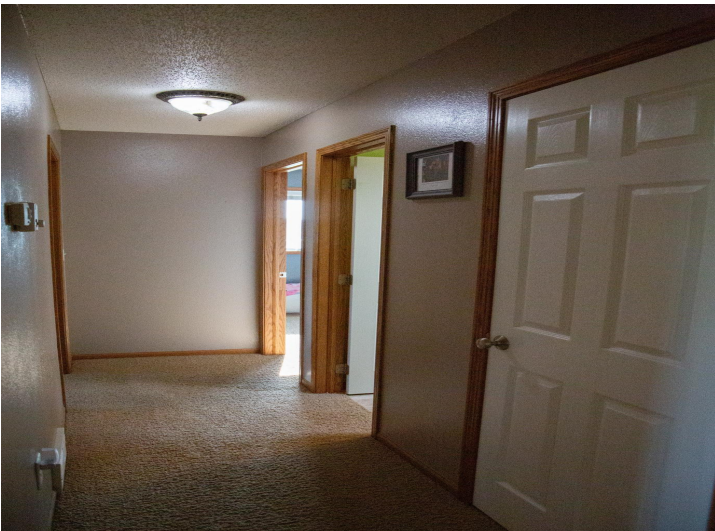
\$389,900
MLS 6759577 Residential
2338 Meadow Lane
Hawley MN 56549



website: www.AffinityRealEstate.com | email: info@affinityrealestate.com | office: 218-237-3333 | fax: 218-237-3377

Affinity
REAL ESTATE INC

\$389,900
MLS 6759577 Residential
2338 Meadow Lane
Hawley MN 56549



website: www.AffinityRealEstate.com | email: info@affinityrealestate.com | office: 218-237-3333 | fax: 218-237-3377

Affinity
REAL ESTATE INC

\$389,900
MLS 6759577 Residential
2338 Meadow Lane
Hawley MN 56549



website: www.AffinityRealEstate.com | email: info@affinityrealestate.com | office: 218-237-3333 | fax: 218-237-3377



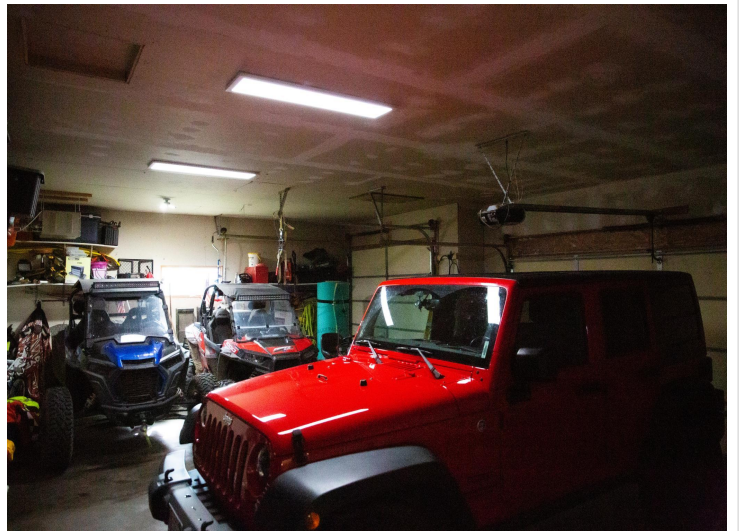
\$389,900
 MLS 6759577 Residential
 2338 Meadow Lane
 Hawley MN 56549



website: www.AffinityRealEstate.com | email: info@affinityrealestate.com | office: 218-237-3333 | fax: 218-237-3377



\$389,900
MLS 6759577 Residential
2338 Meadow Lane
Hawley MN 56549



website: www.AffinityRealEstate.com | email: info@affinityrealestate.com | office: 218-237-3333 | fax: 218-237-3377

Affinity
REAL ESTATE INC

\$389,900
MLS 6759577 Residential
2338 Meadow Lane
Hawley MN 56549



website: www.AffinityRealEstate.com | email: info@affinityrealestate.com | office: 218-237-3333 | fax: 218-237-3377



\$389,900
MLS 6759577 Residential
2338 Meadow Lane
Hawley MN 56549