



MLS 6759730 Lake Home

\$965,000

3,288 sq ft
4 bedrooms
4 baths

12640 Fawn Lake Road
Crosslake MN 56442

Waterfront: Fawn Lake (18030900)

Status: Active

Description:

Set on 7.7 acres of tall pines, with sunset views over Fawn Lake, this one-level living, Nor-Son built log home (+ 48 x 40 pole barn built in 2020) is the total package of privacy, serenity, and lake life. The kitchen is the heart of the home with endless granite breakfast bar for gathering, gorgeous cabinetry, and pantry. Open and soaring vaults in the family room let in all the light and showcase the spectacular sunset view over Fawn Lake. Main level primary feels like a resort suite, featuring ensuite jetted tub and heated floors, gas fireplace, large walk-in closet, easy laundry access and separate deck entrance. The walk-out lower level offers additional entertainment space with open family room, wet bar, and game room. Guests can choose from three spacious bedrooms (two on lower-level and one upstairs), and the loft is an ideal home office, exercise, or creative space. Outdoors you can gather on the sprawling lakeside deck or paver patio with fire pit. The yard will accommodate lakeside lawn games and is just a few feet from water's edge and your private boat dock. No steep elevation or stairs to the shore! The oversized attached garage is heated with floor drain, storage closets and optional kennel set-up. A 48x40 pole building built in 2020 offers plenty of room for all your toys, plus RV hookup for visiting guests. While private and off the beaten path, this home is in just minutes from the resort hot-spots in Pequot, Cuyuna and Crosslake/Whitefish. New roof in 2023. Scheduled deck and siding sealing will be done prior to closing. Incredible price for an incredible property, PLUS Seller will include all lake toys, furniture, linens and furnishings - \$40,000 value! For your own crew, or as an investment (vacation rental or potential to divide land?), this is an incredible value!

Additional Details:

Year Built	2001
Lot Acres	7.7
Lot Dimensions	425x1319x220x881x475
Garage Stalls	8
School District	186
Taxes	\$5,966
Taxes with Assessments	\$5,966
Tax Year	2024

Additional Features:

Basement: Finished, Walkout **Fuel:** Electric, Natural Gas **Garage:** 8 **Heat:** Forced Air, Radiant Floor **Sewer:** Private Sewer, Tank with Drainage

Well: Air **Conditioning:** Central Air

Listed By:
Coldwell Banker Realty

Follow Real Estate.com's Broker Reciprocity program, allowing us to display other broker's listings on our website. All properties are subject to prior sale, change or withdrawal.



Call Affinity Real Estate

218-237-3333

info@affinityrealestate.com



Affinity Real Estate - 600 Park Avenue South - Park Rapids MN 56470



website: www.AffinityRealEstate.com | email: info@affinityrealestate.com | office: 218-237-3333 | fax: 218-237-3377

Affinity
REAL ESTATE INC

\$965,000
MLS 6759730 Lake Home
12640 Fawn Lake Road
Crosslake MN 56442



website: www.AffinityRealEstate.com | email: info@affinityrealestate.com | office: 218-237-3333 | fax: 218-237-3377

Affinity
REAL ESTATE INC

\$965,000
MLS 6759730 Lake Home
12640 Fawn Lake Road
Crosslake MN 56442



website: www.AffinityRealEstate.com | email: info@affinityrealestate.com | office: 218-237-3333 | fax: 218-237-3377

Affinity
REAL ESTATE INC

\$965,000

MLS 6759730 Lake Home
12640 Fawn Lake Road
Crosslake MN 56442



website: www.AffinityRealEstate.com | email: info@affinityrealestate.com | office: 218-237-3333 | fax: 218-237-3377

Affinity
REAL ESTATE INC

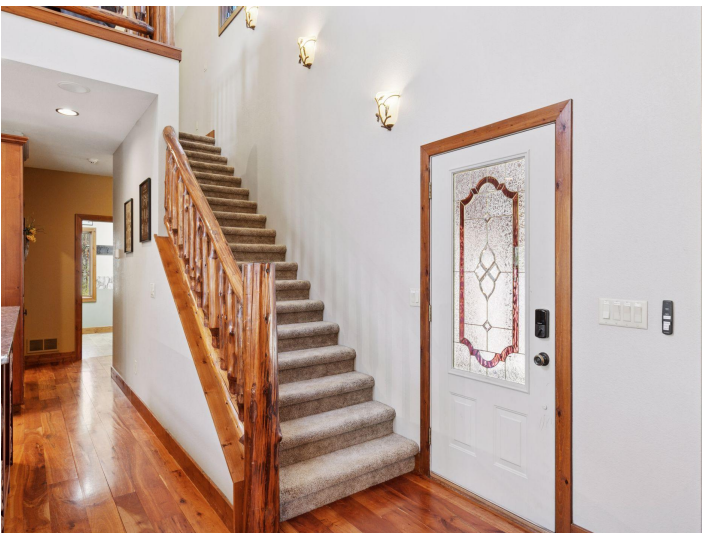
\$965,000
MLS 6759730 Lake Home
12640 Fawn Lake Road
Crosslake MN 56442



website: www.AffinityRealEstate.com | email: info@affinityrealestate.com | office: 218-237-3333 | fax: 218-237-3377

Affinity
REAL ESTATE INC

\$965,000
MLS 6759730 Lake Home
12640 Fawn Lake Road
Crosslake MN 56442



website: www.AffinityRealEstate.com | email: info@affinityrealestate.com | office: 218-237-3333 | fax: 218-237-3377

Affinity
REAL ESTATE INC

\$965,000
MLS 6759730 Lake Home
12640 Fawn Lake Road
Crosslake MN 56442



website: www.AffinityRealEstate.com | email: info@affinityrealestate.com | office: 218-237-3333 | fax: 218-237-3377



\$965,000
MLS 6759730 Lake Home
12640 Fawn Lake Road
Crosslake MN 56442



website: www.AffinityRealEstate.com | email: info@affinityrealestate.com | office: 218-237-3333 | fax: 218-237-3377

Affinity
REAL ESTATE INC

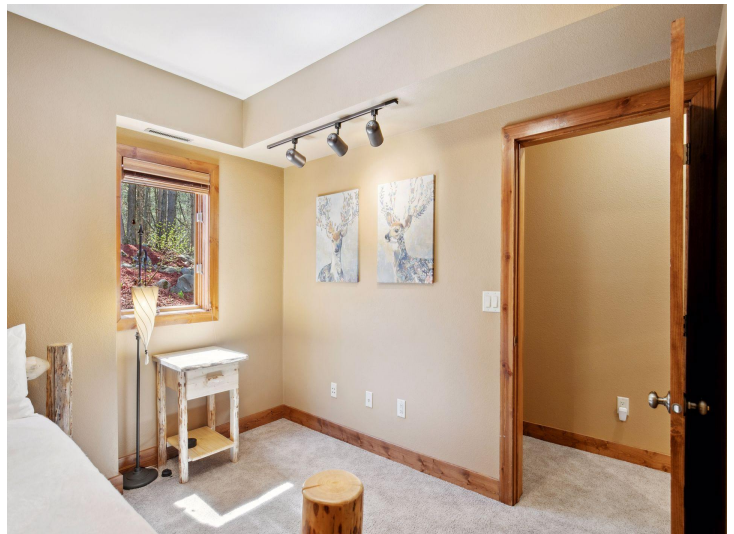
\$965,000
MLS 6759730 Lake Home
12640 Fawn Lake Road
Crosslake MN 56442



website: www.AffinityRealEstate.com | email: info@affinityrealestate.com | office: 218-237-3333 | fax: 218-237-3377

Affinity
REAL ESTATE INC

\$965,000
MLS 6759730 Lake Home
12640 Fawn Lake Road
Crosslake MN 56442



website: www.AffinityRealEstate.com | email: info@affinityrealestate.com | office: 218-237-3333 | fax: 218-237-3377



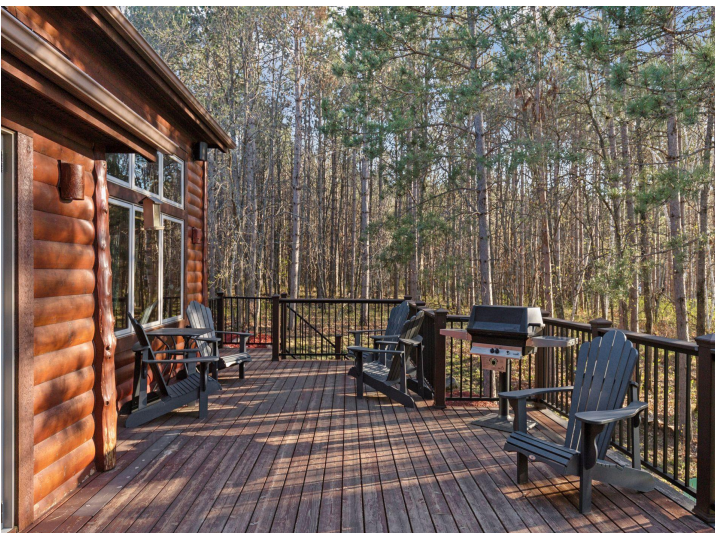
\$965,000
MLS 6759730 Lake Home
12640 Fawn Lake Road
Crosslake MN 56442



website: www.AffinityRealEstate.com | email: info@affinityrealestate.com | office: 218-237-3333 | fax: 218-237-3377

Affinity
REAL ESTATE INC

\$965,000
MLS 6759730 Lake Home
12640 Fawn Lake Road
Crosslake MN 56442



website: www.AffinityRealEstate.com | email: info@affinityrealestate.com | office: 218-237-3333 | fax: 218-237-3377



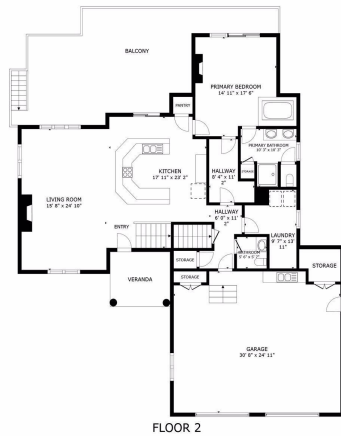
\$965,000
 MLS 6759730 Lake Home
 12640 Fawn Lake Road
 Crosslake MN 56442



website: www.AffinityRealEstate.com | email: info@affinityrealestate.com | office: 218-237-3333 | fax: 218-237-3377

Affinity
REAL ESTATE INC

\$965,000
MLS 6759730 Lake Home
12640 Fawn Lake Road
Crosslake MN 56442



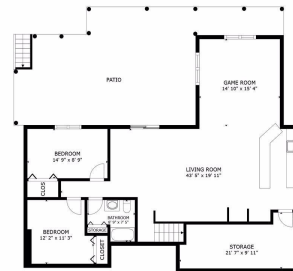
GROSS LIVING AREA
FLOOR 1: 1,509 sq. ft. FLOOR 2: 1,711 sq. ft. FLOOR 3: 558 sq. ft.
EXCLUDED AREAS: GARAGES: 786 sq. ft. EXTERNAL AREAS: 1,471 sq. ft.
TOTAL: 3,798 sq. ft.

SIZES AND DIMENSIONS ARE APPROXIMATE, ACTUAL MAY VARY.



GROSS LIVING AREA
FLOOR 1: 1,509 sq. ft. FLOOR 2: 1,711 sq. ft. FLOOR 3: 558 sq. ft.
EXCLUDED AREAS: GARAGES: 786 sq. ft. EXTERNAL AREAS: 1,471 sq. ft.
TOTAL: 3,798 sq. ft.

SIZES AND DIMENSIONS ARE APPROXIMATE, ACTUAL MAY VARY.



GROSS LIVING AREA
FLOOR 1: 1,509 sq. ft. FLOOR 2: 1,711 sq. ft. FLOOR 3: 558 sq. ft.
EXCLUDED AREAS: GARAGES: 786 sq. ft. EXTERNAL AREAS: 1,471 sq. ft.
TOTAL: 3,798 sq. ft.

SIZES AND DIMENSIONS ARE APPROXIMATE, ACTUAL MAY VARY.



website: www.AffinityRealEstate.com | email: info@affinityrealestate.com | office: 218-237-3333 | fax: 218-237-3377

Affinity
REAL ESTATE INC

\$965,000
MLS 6759730 Lake Home
12640 Fawn Lake Road
Crosslake MN 56442