



MLS 6760059 Residential

\$329,900

2,240 sq ft
4 bedrooms
2 baths

25703 County Road 125
Park Rapids MN 56470

Status: Active

Description:

Private 4 bedroom, 2 bath country home between Park Rapids and Osage! 4 acres of beautifully wooded land with a mix of pines and hardwoods. Wildlife meadow/pond behind house with a peninsula of land running along the south. Also includes a large detached garage, finished with heat, storage shed, wonderful fenced garden area, 40 year shingles in 2021, nearly new stainless appliances and fresh, bright interiors. Turn-the-key and enjoy this home without doing a thing! Ready for immediate occupancy! Also has a fiber optic internet, central air conditioning, new stove and dishwasher, one year old refrigerator, new kitchen countertops and an updated forced air propane furnace.

Additional Details:

Year Built	1998
Lot Acres	4
Lot Dimensions	800 x 218
Garage Stalls	2
School District	1384
Taxes	\$1,072
Taxes with Assessments	\$1,132
Tax Year	2025

Additional Features:

Basement: Egress Window(s), Finished, Full, Walkout, Wood **Fuel:** Array **Garage:** 2 **Heat:** Forced Air **Sewer:** Private Sewer, Septic System Compliant - Yes, Tank with Drainage Field **Water:** Drilled, Private **Air Conditioning:** Central Air

Driving Directions:

From Park Rapids head west on Hwy 34 for about 5 miles to County Road 125 for about a mile to the home on the right.



Listed By:
Keller Williams Realty Professionals

Affinity Real Estate Inc. participates in the Regional Multiple Listing Service of Minnesota, Inc Broker Reciprocity (sm) program, allowing us to display other broker's listings on our website. All properties are subject to prior sale, change or withdrawal.



Call Affinity Real Estate

218-237-3333

info@affinityrealestate.com



Affinity Real Estate - 600 Park Avenue South - Park Rapids MN 56470



website: www.AffinityRealEstate.com | email: info@affinityrealestate.com | office: 218-237-3333 | fax: 218-237-3377



\$329,900
 MLS 6760059 Residential
 25703 County Road 125
 Park Rapids MN 56470



website: www.AffinityRealEstate.com | email: info@affinityrealestate.com | office: 218-237-3333 | fax: 218-237-3377

Affinity
REAL ESTATE INC

\$329,900
MLS 6760059 Residential
25703 County Road 125
Park Rapids MN 56470



website: www.AffinityRealEstate.com | email: info@affinityrealestate.com | office: 218-237-3333 | fax: 218-237-3377



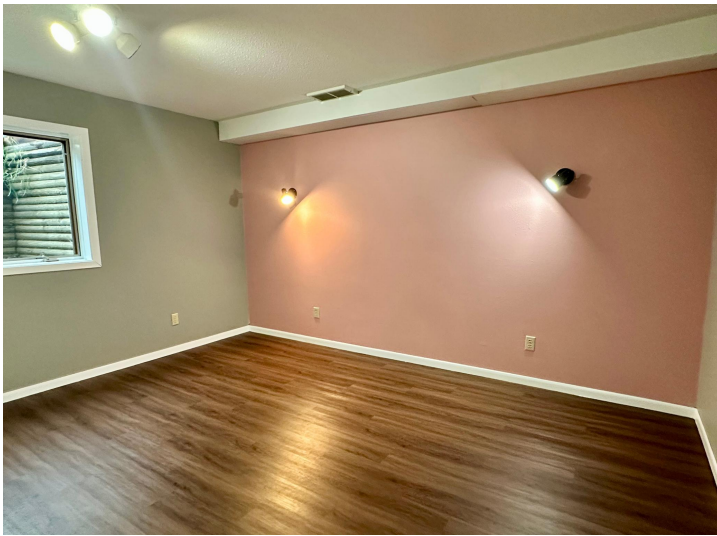
\$329,900
 MLS 6760059 Residential
 25703 County Road 125
 Park Rapids MN 56470



website: www.AffinityRealEstate.com | email: info@affinityrealestate.com | office: 218-237-3333 | fax: 218-237-3377



\$329,900
MLS 6760059 Residential
25703 County Road 125
Park Rapids MN 56470



website: www.AffinityRealEstate.com | email: info@affinityrealestate.com | office: 218-237-3333 | fax: 218-237-3377



\$329,900
 MLS 6760059 Residential
 25703 County Road 125
 Park Rapids MN 56470



website: www.AffinityRealEstate.com | email: info@affinityrealestate.com | office: 218-237-3333 | fax: 218-237-3377



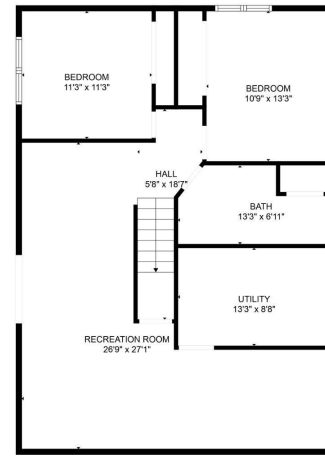
\$329,900
 MLS 6760059 Residential
 25703 County Road 125
 Park Rapids MN 56470



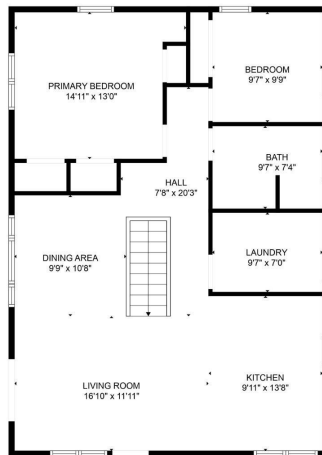
website: www.AffinityRealEstate.com | email: info@affinityrealestate.com | office: 218-237-3333 | fax: 218-237-3377

Affinity
REAL ESTATE INC

\$329,900
MLS 6760059 Residential
25703 County Road 125
Park Rapids MN 56470



FLOOR PLAN CREATED BY CUBICASA APP. MEASUREMENTS DEEMED HIGHLY RELIABLE BUT NOT GUARANTEED.



FLOOR PLAN CREATED BY CUBICASA APP. MEASUREMENTS DEEMED HIGHLY RELIABLE BUT NOT GUARANTEED.

website: www.AffinityRealEstate.com | email: info@affinityrealestate.com | office: 218-237-3333 | fax: 218-237-3377



\$329,900
 MLS 6760059 Residential
 25703 County Road 125
 Park Rapids MN 56470