



MLS 6760445 Residential

\$229,000

1,012 sq ft
3 bedrooms
2 baths

924 Grove Street
Brainerd MN 56401

Status: Active

Description:

This Lovely 3 bedroom, 2 bathroom home offers a perfect blend of comfort and convenience. Located just moments away from Gregory Park, you'll enjoy easy access to green spaces and community activities. Inside, hardwood floors flow throughout, enhancing the home's warm, inviting atmosphere. A new tankless water heater was just installed. Don't miss the opportunity to make this charming home yours!

Additional Details:

Year Built	1898
Lot Acres	0.17
Lot Dimensions	10,000 Sq Ft
Garage Stalls	2
School District	181
Taxes	\$1,834
Taxes with Assessments	\$1,834
Tax Year	2024

Additional Features:

Basement: Block **Fuel:** Natural Gas **Garage:** 2 **Heat:** Forced Air **Sewer:** City Sewer - In Street **Water:** City Water - In Street **Air Conditioning:** Window Unit(s)

Driving Directions:

Located a few blocks from Gregory Park. Turn from Washington Street onto Grove Street.



Listed By:
NextHome Horizons

Affinity Real Estate Inc. participates in the Regional Multiple Listing Service of Minnesota, Inc Broker Reciprocity (sm) program, allowing us to display other broker's listings on our website. All properties are subject to prior sale, change or withdrawal.



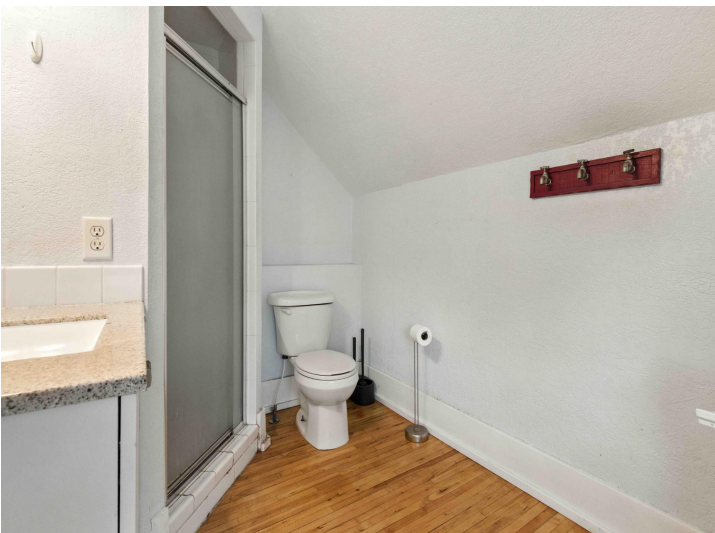
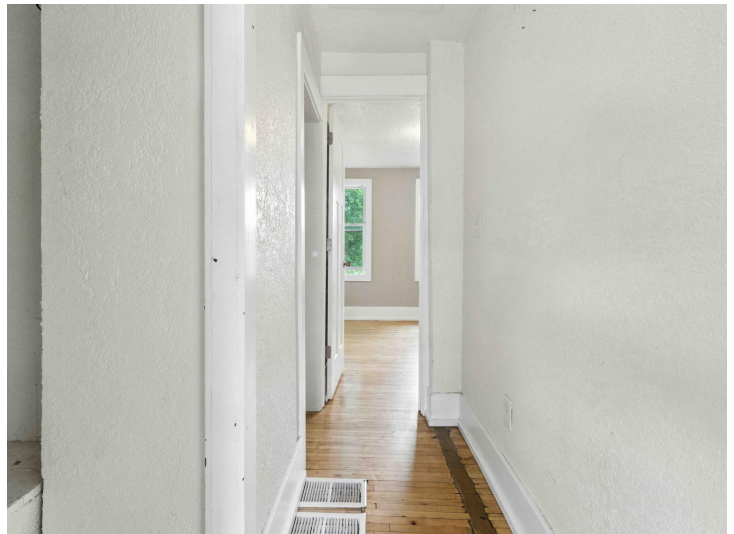
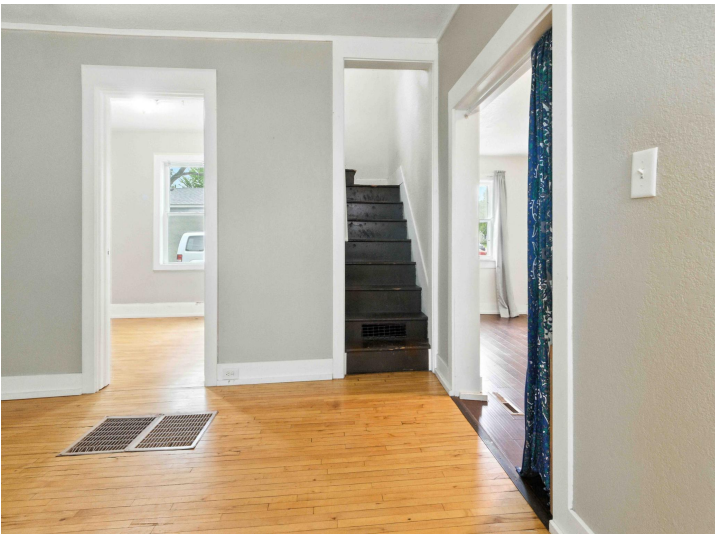
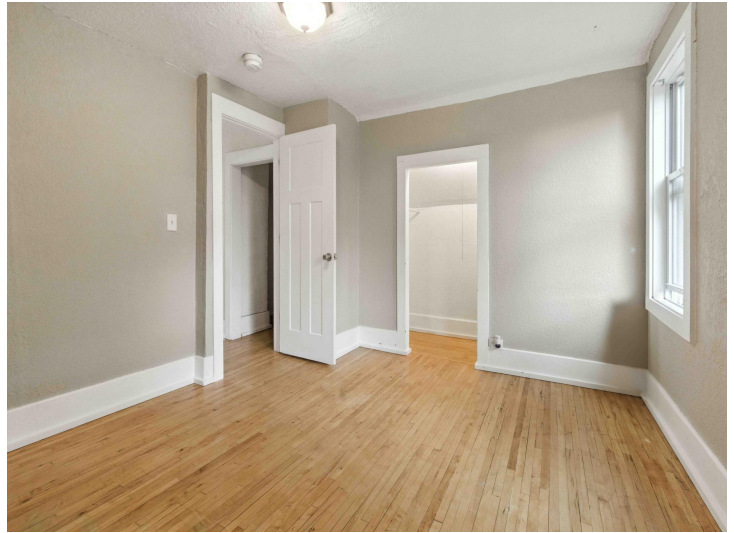
Call Affinity Real Estate

218-237-3333

info@affinityrealestate.com



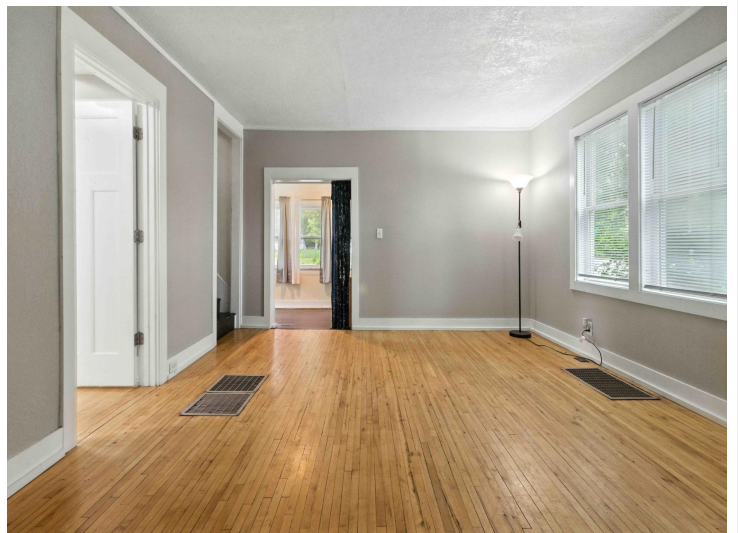
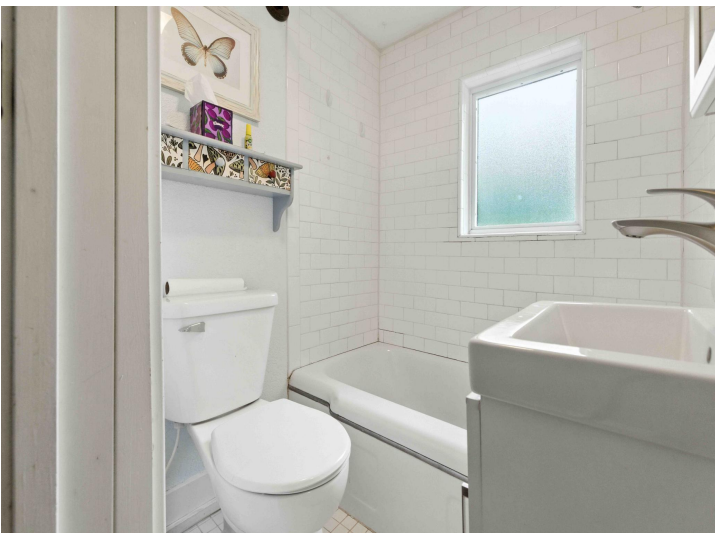
Affinity Real Estate - 600 Park Avenue South - Park Rapids MN 56470



website: www.AffinityRealEstate.com | email: info@affinityrealestate.com | office: 218-237-3333 | fax: 218-237-3377



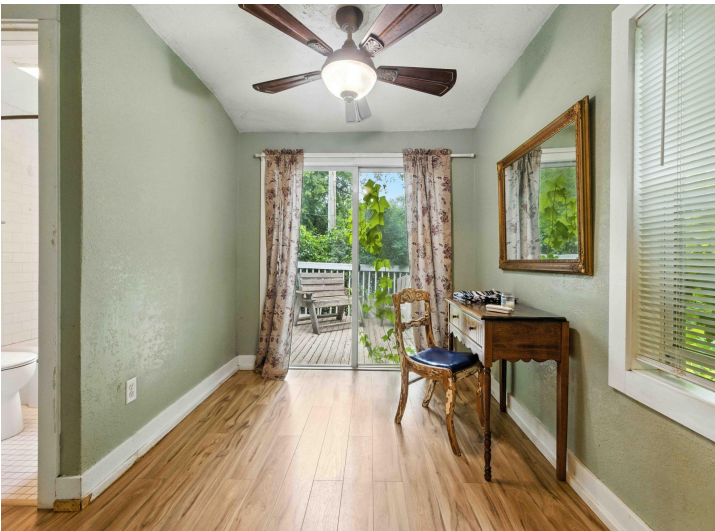
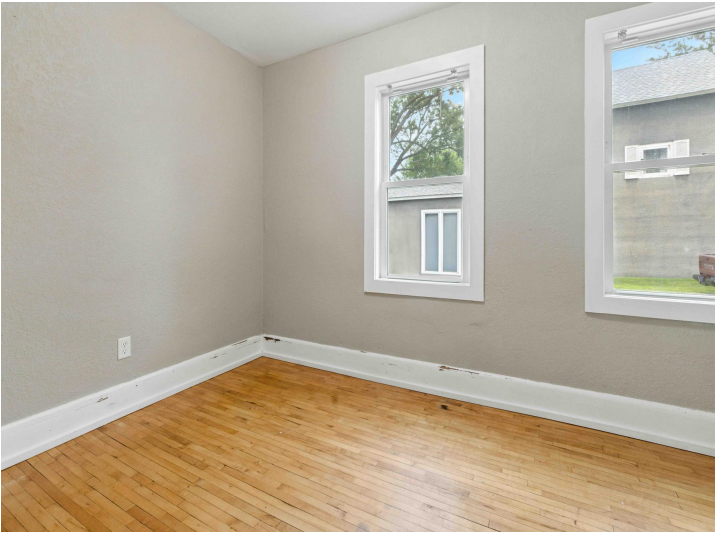
\$229,000
MLS 6760445 Residential
924 Grove Street
Brainerd MN 56401



website: www.AffinityRealEstate.com | email: info@affinityrealestate.com | office: 218-237-3333 | fax: 218-237-3377



\$229,000
 MLS 6760445 Residential
 924 Grove Street
 Brainerd MN 56401



website: www.AffinityRealEstate.com | email: info@affinityrealestate.com | office: 218-237-3333 | fax: 218-237-3377



\$229,000
 MLS 6760445 Residential
 924 Grove Street
 Brainerd MN 56401



website: www.AffinityRealEstate.com | email: info@affinityrealestate.com | office: 218-237-3333 | fax: 218-237-3377



\$229,000
 MLS 6760445 Residential
 924 Grove Street
 Brainerd MN 56401



website: www.AffinityRealEstate.com | email: info@affinityrealestate.com | office: 218-237-3333 | fax: 218-237-3377



\$229,000
MLS 6760445 Residential
924 Grove Street
Brainerd MN 56401