



MLS 6760485 Commercial

**\$189,900**

55011 State Highway 34  
Osage MN 56570

Status: Active

**Description:**

Excellent opportunity to own this landmark location with prime visibility on highly traveled State Hwy 34. Tons of room to grow to your liking for multiple business types with 1.82 acres. Located on a corner lot with multiple access points on two main highways, includes large parking lot and a nicely treed undeveloped area for expansion. The building features 2240 sq ft on one level with two large garage stalls formerly used for auto repair and a spacious area with common bathroom that could host many business opportunities. This property includes an older manufactured home that is tucked away behind the main commercial building that one could use as a rental property or managers home.

**Additional Details:**

Year Built	1971
Lot Acres	1.82
Lot Dimensions	500x300x390x135
Garage Stalls	2
School District	1384
Taxes	\$1,568
Taxes with Assessments	\$1,568
Tax Year	2025

**Additional Features:**

**Fuel:** Array **Garage:** 2 **Heat:** Forced Air **Sewer:** Tank with Drainage Field **Water:** Drilled, Well

**Driving Directions:**

From Hwy 71 & 34 in Park Rapids, west on Hwy 34 for 9 miles to property on left.



Listed By:  
eXp Realty

Affinity Real Estate Inc. participates in the Regional Multiple Listing Service of Minnesota, Inc Broker Reciprocity (sm) program, allowing us to display other broker's listings on our website. All properties are subject to prior sale, change or withdrawal.



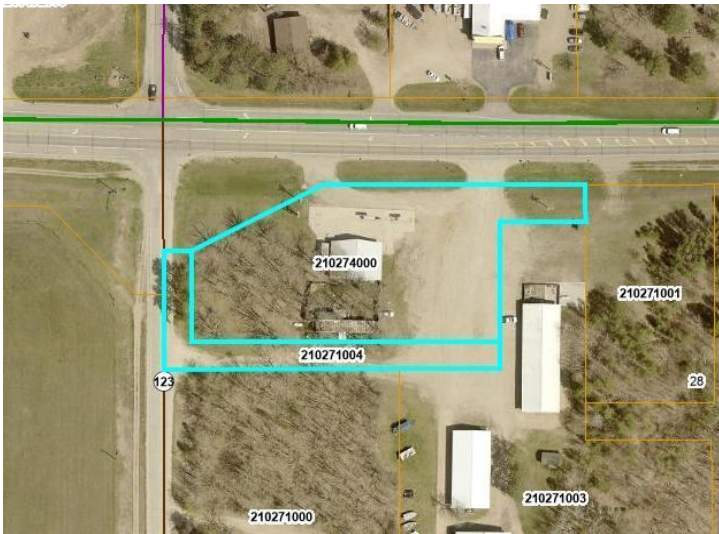
Call Affinity Real Estate

**218-237-3333**

[info@affinityrealestate.com](mailto:info@affinityrealestate.com)



Affinity Real Estate - 600 Park Avenue South - Park Rapids MN 56470



website: [www.AffinityRealEstate.com](http://www.AffinityRealEstate.com) | email: [info@affinityrealestate.com](mailto:info@affinityrealestate.com) | office: 218-237-3333 | fax:218-237-3377



**\$189,900**  
MLS 6760485 Commercial  
55011 State Highway 34  
Osage MN 56570



website: [www.AffinityRealEstate.com](http://www.AffinityRealEstate.com) | email: [info@affinityrealestate.com](mailto:info@affinityrealestate.com) | office: 218-237-3333 | fax:218-237-3377



**\$189,900**  
MLS 6760485 Commercial  
55011 State Highway 34  
Osage MN 56570



website: [www.AffinityRealEstate.com](http://www.AffinityRealEstate.com) | email: [info@affinityrealestate.com](mailto:info@affinityrealestate.com) | office: 218-237-3333 | fax:218-237-3377



**\$189,900**  
MLS 6760485 Commercial  
55011 State Highway 34  
Osage MN 56570



website: [www.AffinityRealEstate.com](http://www.AffinityRealEstate.com) | email: [info@affinityrealestate.com](mailto:info@affinityrealestate.com) | office: 218-237-3333 | fax:218-237-3377



**\$189,900**  
MLS 6760485 Commercial  
55011 State Highway 34  
Osage MN 56570