



MLS 6760545 Residential

\$307,900

1,280 sq ft
2 bedrooms
1 baths

4955 Sherman Drive
Bemidji MN 56601

Status: Pending

Description:

Built in 2020 and set on just under 10 acres of beautifully wooded land, this 2-bedroom, 1-bath shouse (shop house) offers the perfect mix of peaceful country living and functional design. Inside, you'll find over 1,200 square feet of open-concept living space with vaulted wood ceilings, a spacious kitchen with a large center island, and a full bath that includes double sinks and in-unit laundry. The layout is bright and open, offering a comfortable place to relax, entertain, or work from home. Outside, you'll love the 1,100 sq ft heated shop. You can enjoy the privacy of mature trees, the convenience of a modern build, and the flexibility of shop house living—all just a short drive from Bemidji.

Additional Details:

Year Built	2020
Lot Acres	9.92
Lot Dimensions	380x1195x427x1052
Garage Stalls	2
School District	31
Taxes	\$3,996
Taxes with Assessments	\$3,996
Tax Year	2025

Additional Features:

Basement: None **Fuel:** Electric, Natural Gas **Garage:** 2 **Heat:** Boiler, Ductless Mini-Split, Radiant Floor **Sewer:** Tank with Drainage Field
Water: Drilled, Well **Air Conditioning:** Ductless Mini-Split

Driving Directions:

Take First Street to Lake Avenue and turn left, follow to Sherman Drive and turn right and continue to 4955 Sherman, will be on the left.



Listed By:
218 Real Estate

Affinity Real Estate Inc. participates in the Regional Multiple Listing Service of Minnesota, Inc Broker Reciprocity (sm) program, allowing us to display other broker's listings on our website. All properties are subject to prior sale, change or withdrawal.



Call Affinity Real Estate

218-237-3333

info@affinityrealestate.com



Affinity Real Estate - 600 Park Avenue South - Park Rapids MN 56470



website: www.AffinityRealEstate.com | email: info@affinityrealestate.com | office: 218-237-3333 | fax: 218-237-3377

Affinity
REAL ESTATE INC

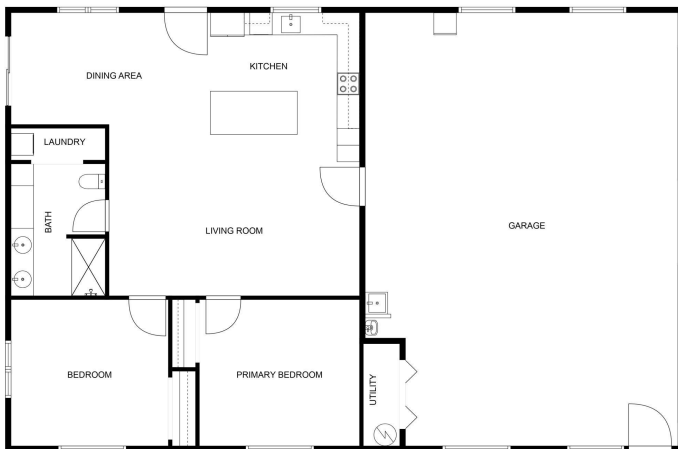
\$307,900
MLS 6760545 Residential
4955 Sherman Drive
Bemidji MN 56601



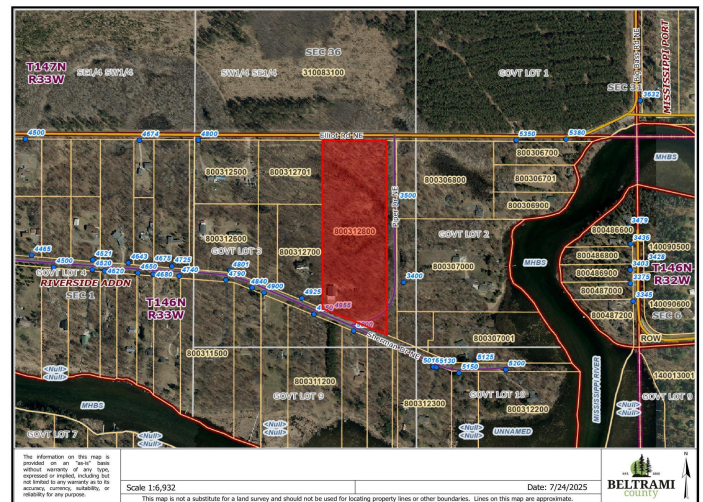
website: www.AffinityRealEstate.com | email: info@affinityrealestate.com | office: 218-237-3333 | fax: 218-237-3377

Affinity
REAL ESTATE INC

\$307,900
MLS 6760545 Residential
4955 Sherman Drive
Bemidji MN 56601



FLOOR PLAN CREATED BY CUBICASA APP. MEASUREMENTS DEEMED HIGHLY RELIABLE BUT NOT GUARANTEED.



website: www.AffinityRealEstate.com | email: info@affinityrealestate.com | office: 218-237-3333 | fax: 218-237-3377

Affinity
REAL ESTATE INC

\$307,900
MLS 6760545 Residential
4955 Sherman Drive
Bemidji MN 56601