



MLS 6760691 Lake Home

**\$874,900**

3,094 sq ft  
5 bedrooms  
4 baths

8038 Lost Lake Road #120  
Nisswa MN 56468

Waterfront: Gull

Status: Active

#### Description:

Immediate Access to Gull Lake with Your Own Boat Slip. Nestled in the exclusive Spider Lake Preserve development, this stunning home offers immediate access to the Gull Lake Chain of Lakes via your very own boat slip. Located on the 6th of 9 properties within this private community, this is a rare opportunity to live in a peaceful, lakefront setting.

Spider Lake Preserve is a small, single-family community in the City of Lake Shore, spanning 35 acres of beautifully grounds. Residents enjoy a prime location, near Lost Lake Lodge, Causeway on Gull, Bar Harbor, Zorbaz, and several golf courses.


On-site amenities include a private dock area, lakeside patio with firepit, pickleball court, walking trails, and beautiful lake homes built by Thomas Allen Homes.

This exceptional walk-out, main-level living home features 5 bedrooms (or 4 bedrooms with a designated office) and 4 bathrooms. You'll appreciate the attention to detail, with two fireplaces, a full bar and family room in the lower level, custom tile showers, cabinetry, and stunning interior beam work. Enjoy outdoor living with both front and rear decks, plus a lower-level patio, all fully landscaped for maximum enjoyment.

This home was previously used as a model for just over a year and is now available for immediate sale. Are you ready to begin your Gull Lake adventure?

#### Additional Details:

Year Built	2024
Lot Acres	0.12
Lot Dimensions	64x83 Build Pad approx 32 acre shared
Garage Stalls	3
School District	181
Taxes	\$6,112
Taxes with Assessments	\$6,178
Tax Year	2025

 Listed By:  
Edina Realty, Inc.

**Basement:** Finished, Walkout **Fuel:** Natural Gas **Garage:** 3 **Heat:** Forced Air **Boiler:** Shared System, **Sewer:** City Sewer/Connected **Water:** Shared System, **Well:** Air Conditioning: Central Air

**Driving Directions:** us to display other broker's listings on our website. All properties are subject to prior sale, change or withdrawal.

From Highway 371 in Nisswa, take Country Rd 77 West to Zorbaz



Call Affinity Real Estate

**218-237-3333**

[info@affinityrealestate.com](mailto:info@affinityrealestate.com)



Affinity Real Estate 600 Park Avenue South, Park Rapids MN 56470  
Full Right on Lost Lake Road to Community on your Right!





website: [www.AffinityRealEstate.com](http://www.AffinityRealEstate.com) | email: [info@affinityrealestate.com](mailto:info@affinityrealestate.com) | office: 218-237-3333 | fax: 218-237-3377

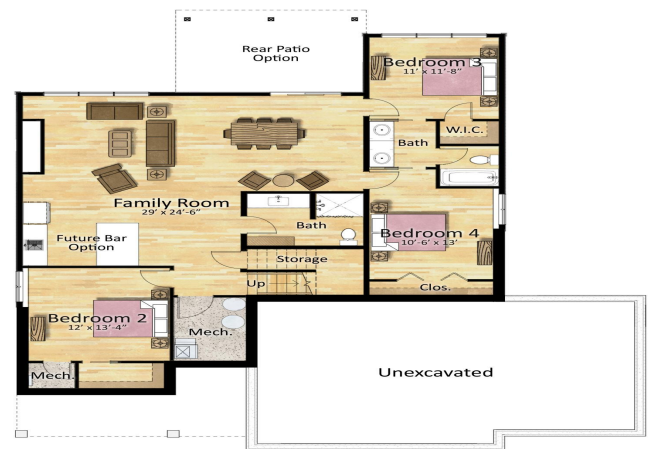


**\$874,900**  
 MLS 6760691 Lake Home  
 8038 Lost Lake Road #120  
 Nisswa MN 56468





First Floor Plan



Lower Floor Plan

ResidentialRendering.com

ResidentialRendering.com

website: [www.AffinityRealEstate.com](http://www.AffinityRealEstate.com) | email: [info@affinityrealestate.com](mailto:info@affinityrealestate.com) | office: 218-237-3333 | fax: 218-237-3377

**Affinity**  
REAL ESTATE INC

**\$874,900**  
MLS 6760691 Lake Home  
8038 Lost Lake Road #120  
Nisswa MN 56468





website: [www.AffinityRealEstate.com](http://www.AffinityRealEstate.com) | email: [info@affinityrealestate.com](mailto:info@affinityrealestate.com) | office: 218-237-3333 | fax: 218-237-3377



**\$874,900**  
 MLS 6760691 Lake Home  
 8038 Lost Lake Road #120  
 Nisswa MN 56468



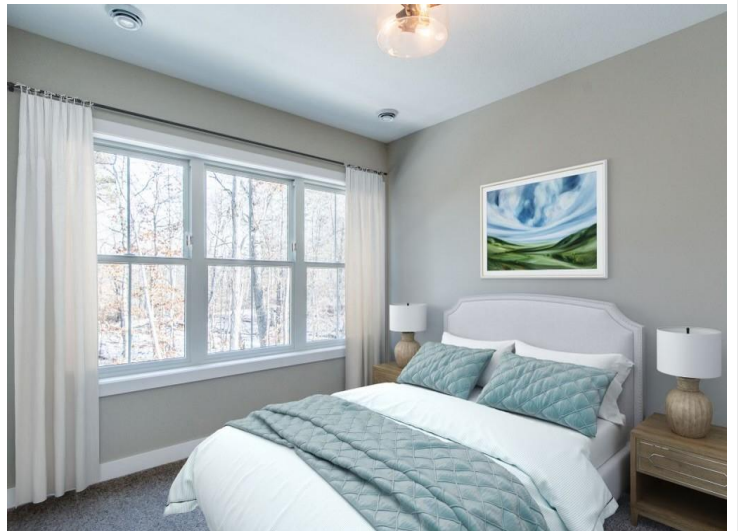


website: [www.AffinityRealEstate.com](http://www.AffinityRealEstate.com) | email: [info@affinityrealestate.com](mailto:info@affinityrealestate.com) | office: 218-237-3333 | fax: 218-237-3377

**Affinity**  
REAL ESTATE INC

**\$874,900**  
MLS 6760691 Lake Home  
8038 Lost Lake Road #120  
Nisswa MN 56468



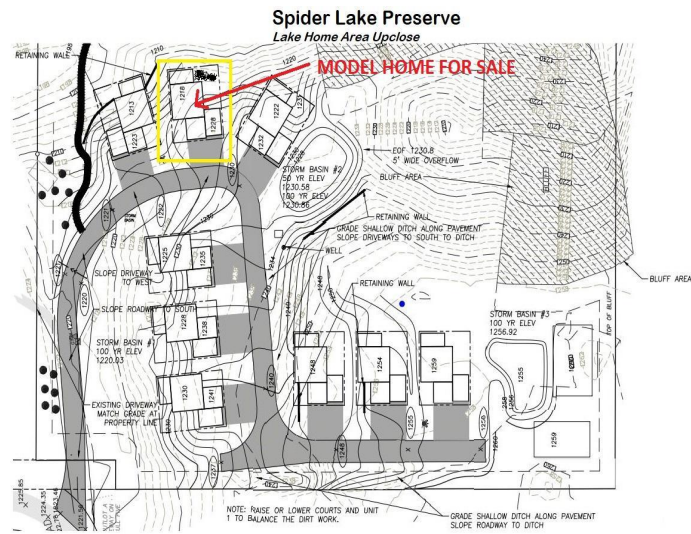


website: [www.AffinityRealEstate.com](http://www.AffinityRealEstate.com) | email: [info@affinityrealestate.com](mailto:info@affinityrealestate.com) | office: 218-237-3333 | fax: 218-237-3377



**\$874,900**  
 MLS 6760691 Lake Home  
 8038 Lost Lake Road #120  
 Nisswa MN 56468





website: [www.AffinityRealEstate.com](http://www.AffinityRealEstate.com) | email: [info@affinityrealestate.com](mailto:info@affinityrealestate.com) | office: 218-237-3333 | fax: 218-237-3377



**\$874,900**  
 MLS 6760691 Lake Home  
 8038 Lost Lake Road #120  
 Nisswa MN 56468