



MLS 6760860 Lake Home

\$480,000

1,420 sq ft
3 bedrooms
2 baths

5335 Pine Beach Road
Brainerd MN 56401

Waterfront: Red Sand

Status: Active

Description:

Experience the perfect blend of lakeside living and modern comfort in this completely renovated Red Sand Lake home set back from the water. Just minutes from Baxter's shopping and dining, this move-in ready property offers convenient main-floor living with 3 bedrooms and 2 bathrooms plus the beautiful new kitchen showcases updated appliances, complemented by new flooring throughout.

The refreshed exterior features a brand-new roof, while the outdoor patio area with a stone fireplace provides the perfect viewpoint to enjoy your waterfront views of the lake. You're going to love the oversized lot set on 2.23 scenic acres with hard sandy bottom lakefront. This property offers abundant storage with both a 2-stall detached garage (featuring 3 doors for easy drive-through access) and a massive 26x46 pole barn with concrete flooring—perfect for boats, lake toys, or a workshop. Your lake life awaits on this stunning property just North of Baxter!

Additional Details:

Year Built	1962
Lot Acres	2.23
Lot Dimensions	101x927x100x925
Garage Stalls	4
School District	181
Taxes	\$2,063
Taxes with Assessments	\$2,088
Tax Year	2025

Additional Features:

Basement: Block, Partial **Fuel:** Natural Gas **Garage:** 4 **Heat:** Forced Air **Sewer:** Private Sewer, Tank with Drainage Field **Water:** Drilled, Well
Air Conditioning: Central Air

Driving Directions:

From the 210/371 intersection, go north on 371 and take a left on Pine Beach Rd (County Rd 77) and follow to house on the left.



Listed By:
Real Broker, LLC

Affinity Real Estate Inc. participates in the Regional Multiple Listing Service of Minnesota, Inc Broker Reciprocity (sm) program, allowing us to display other broker's listings on our website. All properties are subject to prior sale, change or withdrawal.



Call Affinity Real Estate

218-237-3333

info@affinityrealestate.com



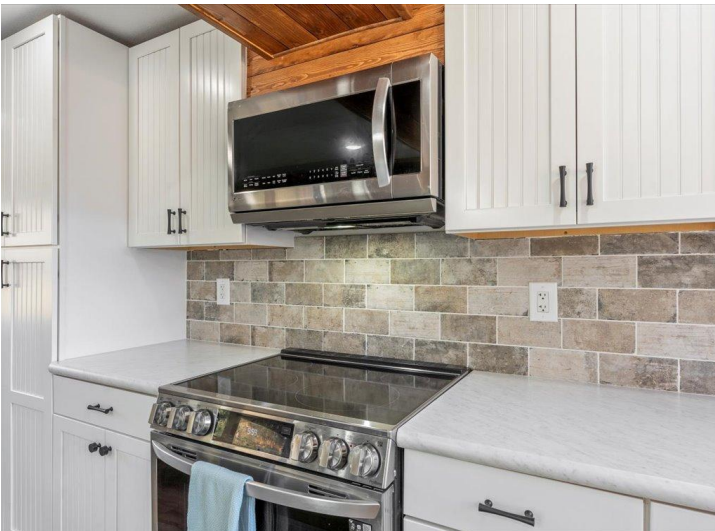
Affinity Real Estate - 600 Park Avenue South - Park Rapids MN 56470



website: www.AffinityRealEstate.com | email: info@affinityrealestate.com | office: 218-237-3333 | fax: 218-237-3377

Affinity
REAL ESTATE INC

\$480,000
MLS 6760860 Lake Home
5335 Pine Beach Road
Brainerd MN 56401



website: www.AffinityRealEstate.com | email: info@affinityrealestate.com | office: 218-237-3333 | fax: 218-237-3377



\$480,000
 MLS 6760860 Lake Home
 5335 Pine Beach Road
 Brainerd MN 56401



website: www.AffinityRealEstate.com | email: info@affinityrealestate.com | office: 218-237-3333 | fax: 218-237-3377

Affinity
REAL ESTATE INC

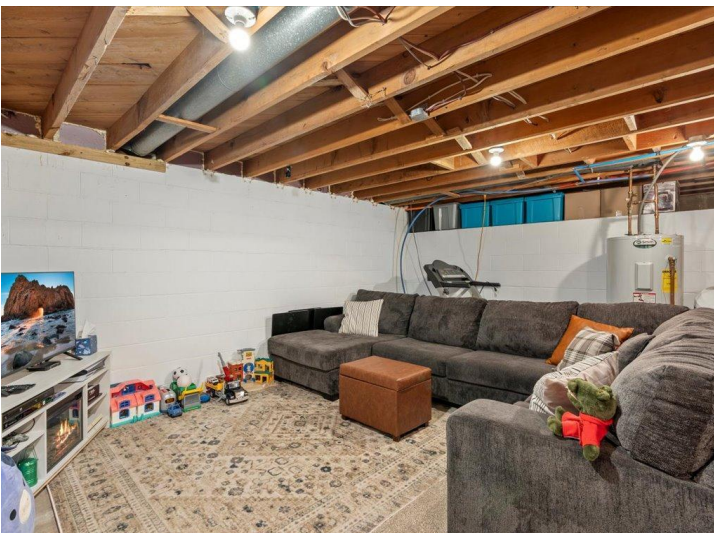
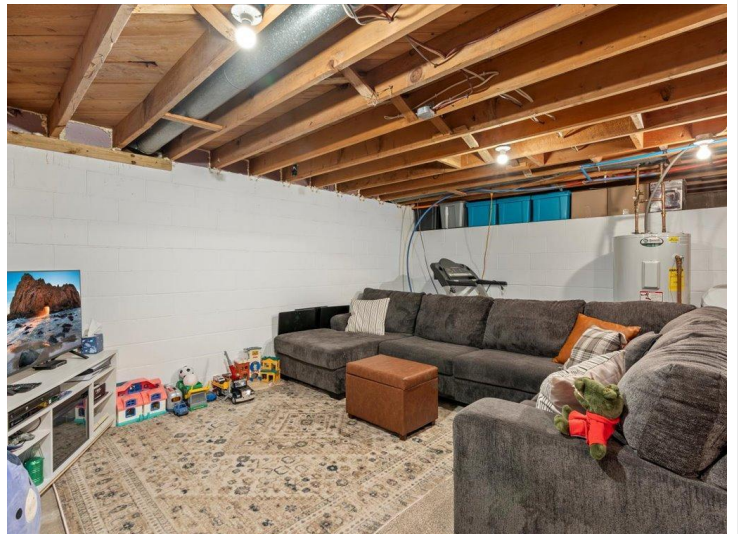
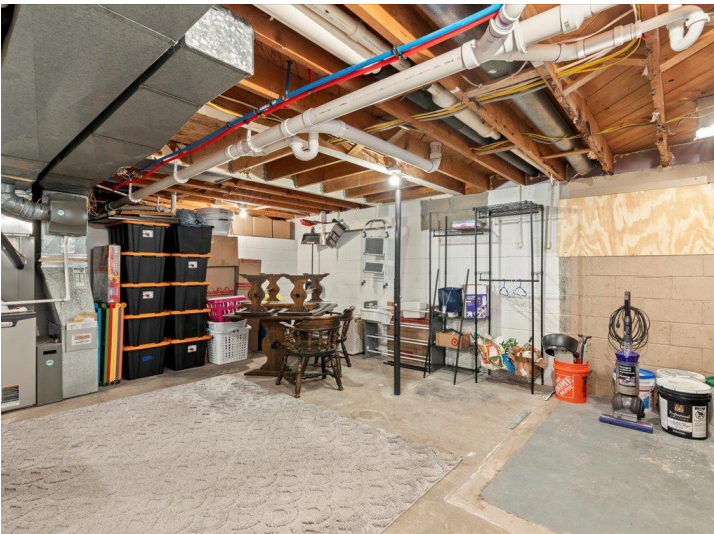
\$480,000
MLS 6760860 Lake Home
5335 Pine Beach Road
Brainerd MN 56401



website: www.AffinityRealEstate.com | email: info@affinityrealestate.com | office: 218-237-3333 | fax: 218-237-3377

Affinity
REAL ESTATE INC

\$480,000
MLS 6760860 Lake Home
5335 Pine Beach Road
Brainerd MN 56401



website: www.AffinityRealEstate.com | email: info@affinityrealestate.com | office: 218-237-3333 | fax: 218-237-3377



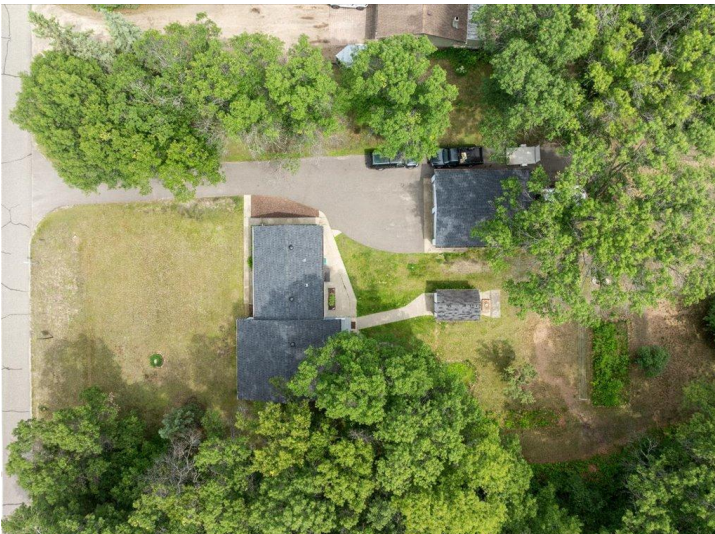
\$480,000
 MLS 6760860 Lake Home
 5335 Pine Beach Road
 Brainerd MN 56401



website: www.AffinityRealEstate.com | email: info@affinityrealestate.com | office: 218-237-3333 | fax: 218-237-3377

Affinity
REAL ESTATE INC

\$480,000
MLS 6760860 Lake Home
5335 Pine Beach Road
Brainerd MN 56401



website: www.AffinityRealEstate.com | email: info@affinityrealestate.com | office: 218-237-3333 | fax: 218-237-3377

Affinity
REAL ESTATE INC

\$480,000
MLS 6760860 Lake Home
5335 Pine Beach Road
Brainerd MN 56401



website: www.AffinityRealEstate.com | email: info@affinityrealestate.com | office: 218-237-3333 | fax: 218-237-3377



\$480,000
 MLS 6760860 Lake Home
 5335 Pine Beach Road
 Brainerd MN 56401



website: www.AffinityRealEstate.com | email: info@affinityrealestate.com | office: 218-237-3333 | fax: 218-237-3377



\$480,000
 MLS 6760860 Lake Home
 5335 Pine Beach Road
 Brainerd MN 56401