

MLS 6760876 Lake Land

**\$975,000**

**Description:**

76+ HEAVILY WOODED ACRES & 1800+ FEET OF LAKESHORE. Opportunity awaits with this unique property. Located just south of Longville with easy access off a public road. Whether you're looking for hunting land, a building site with privacy, or a development opportunity, the possibilities are endless.

**Additional Details:**

Lot Acres	76.24
Lot Dimensions	2670x1324x2855x1167
School District	2174
Taxes	\$608
Taxes with Assessments	\$608
Tax Year	2025

**Additional Features:**

**Driving Directions:**

Longville south on 84 past Wheeler Marine to the arrow sign on the left at easement road 2190 State 84.



Listed By:  
Kurilla Real Estate LTD

Affinity Real Estate Inc. participates in the Regional Multiple Listing Service of Minnesota, Inc Broker Reciprocity (sm) program, allowing us to display other broker's listings on our website. All properties are subject to prior sale, change or withdrawal.



**Call Affinity Real Estate**

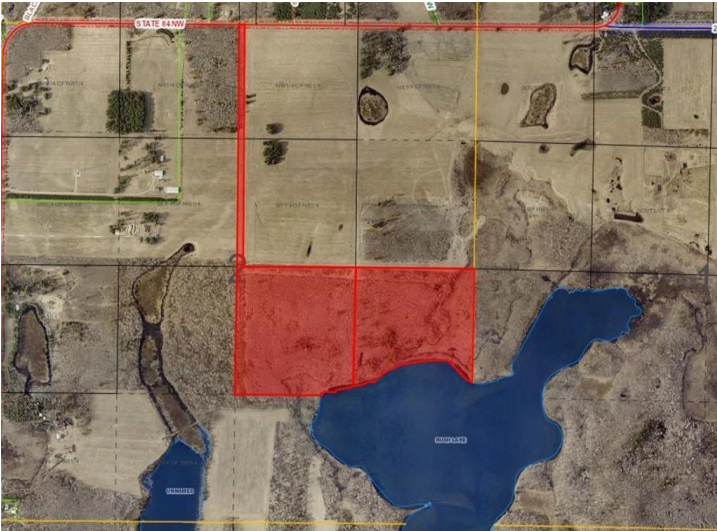
**218-237-3333**

**info@affinityrealestate.com**



**Affinity Real Estate - 600 Park Avenue South - Park Rapids MN 56470**





website: [www.AffinityRealEstate.com](http://www.AffinityRealEstate.com) | email: [info@affinityrealestate.com](mailto:info@affinityrealestate.com) | office: 218-237-3333 | fax:218-237-3377



**\$975,000**  
MLS 6760876 Lake Land  
TBD State 84  
Longville MN 56655





website: [www.AffinityRealEstate.com](http://www.AffinityRealEstate.com) | email: [info@affinityrealestate.com](mailto:info@affinityrealestate.com) | office: 218-237-3333 | fax:218-237-3377



**\$975,000**  
MLS 6760876 Lake Land  
TBD State 84  
Longville MN 56655