

MLS 6760926 Residential

\$115,000

0 sq ft
0 bedrooms
0 baths

340 State 84
Pine River MN 56474

Status: Pending

Description:

You are reading right!!!! 19+ acres in Pine River Mn for \$115,000.00 Create a family compound for years to come. Land has a mobile home but to the best of their knowledge of the Trust the home is a knock down or needs removal by buyer. Well has been drilled but no septic. Only classic outhouse. Amazing opportunity to own a nice chunk of land in northern MN NO SIGN Feel free to walk around on acreage. DO NOT ENTER HOME

Additional Details:

Year Built	1970
Lot Acres	19.34
School District	2174
Taxes	\$388
Taxes with Assessments	\$454
Tax Year	2025

Additional Features:

Basement: None **Fuel:** Other **Heat:** None **Sewer:** None **Water:** Drilled **Air Conditioning:** None

Driving Directions:

371 N Pine to Conrad 44 then take Hwy 84



Listed By:
RE/MAX Results

Affinity Real Estate Inc. participates in the Regional Multiple Listing Service of Minnesota, Inc Broker Reciprocity (sm) program, allowing us to display other broker's listings on our website. All properties are subject to prior sale, change or withdrawal.



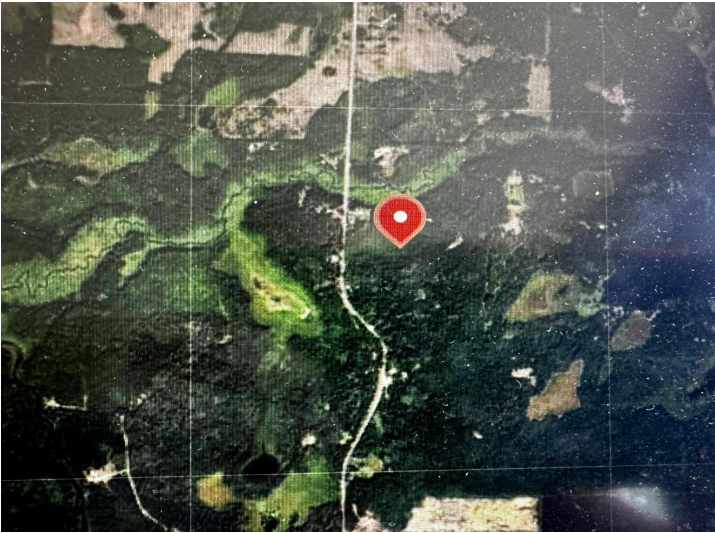
Call Affinity Real Estate

218-237-3333

info@affinityrealestate.com



Affinity Real Estate - 600 Park Avenue South - Park Rapids MN 56470



website: www.AffinityRealEstate.com | email: info@affinityrealestate.com | office: 218-237-3333 | fax: 218-237-3377



\$115,000
 MLS 6760926 Residential
 340 State 84
 Pine River MN 56474

website: www.AffinityRealEstate.com | email: info@affinityrealestate.com | office: 218-237-3333 | fax:218-237-3377



\$115,000
MLS 6760926 Residential
340 State 84
Pine River MN 56474