



MLS 6761304 Land

\$50,000

2.31 Acres
Raw Land

TBD 302 Avenue
Detroit Lakes MN 56501

Status: Active

Description:

This 2.31-acre corner lot in the desirable Rolling Hills development is the perfect canvas for your dream home. Conveniently situated at the intersection of 302nd Ave and Oak Drive, it offers both space and tranquility while being just minutes away from the amenities of Detroit Lakes. Additional acreage available. Don't miss the opportunity to build your ideal retreat in this beautiful setting!

Additional Details:

Lot Acres	2.31
Lot Dimensions	irr
School District	22
Taxes	\$202
Taxes with Assessments	\$202
Tax Year	2024

Additional Features:

Driving Directions:

Hwy 34, just past Schultz lake to 302nd Ave. Property at the north end corner of 302nd Ave and Oak Drive. Just past 18310 302nd Ave on the right hand side.



Listed By:
Re/Max Lakes Region

Affinity Real Estate Inc. participates in the Regional Multiple Listing Service of Minnesota, Inc Broker Reciprocity (sm) program, allowing us to display other broker's listings on our website. All properties are subject to prior sale, change or withdrawal.



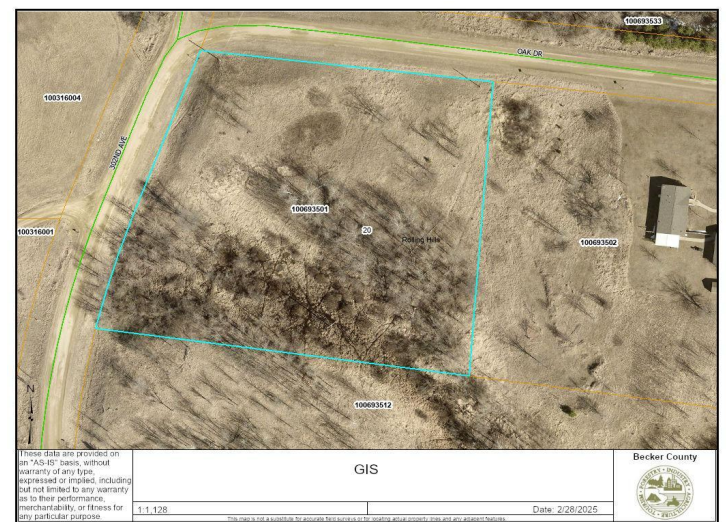
Call Affinity Real Estate

218-237-3333

info@affinityrealestate.com



Affinity Real Estate - 600 Park Avenue South - Park Rapids MN 56470



website: www.AffinityRealEstate.com | email: info@affinityrealestate.com | office: 218-237-3333 | fax: 218-237-3377



\$50,000
 MLS 6761304 Land
 TBD 302 Avenue
 Detroit Lakes MN 56501



website: www.AffinityRealEstate.com | email: info@affinityrealestate.com | office: 218-237-3333 | fax: 218-237-3377



\$50,000
 MLS 6761304 Land
 TBD 302 Avenue
 Detroit Lakes MN 56501