



MLS 6761323 Residential

\$1

1,344 sq ft
3 bedrooms
2 baths

14118 Eide Road
Brainerd MN 56401

Status: Active

Description:

This is a wonderful property, spacious, versatile, and full of amenities! A great opportunity to own this private secluded property within minutes of downtown Brainerd. This property features a 3 bedroom 2 bath manufactured home, attached two car garage, large spacious yard, paved street & driveway to your front door. All the amenities are on one level and the property is in move in ready condition. Large double lot featuring nearly 1.5 acres with the feel of country living and an abundance of wildlife. Propane forced air heat, central air conditioning & a conforming sewer system are of mention. This is a must see.

This is an Auction Property. \$15,000 down nonrefundable certified earnest money due the day of the auction, accompanied with a letter showing proof of funds. This property is being sold AS IS without contingencies, which includes but not limited to the condition of the home or outbuildings, the sewer system, the well or any property lines. Real Estate to be sold on Saturday August 16th at 12:00 PM. The closing will take place within 30-40 days from the Auction day. There will be a 5% buyer's premium added to the final accepted high bid creating the contract price. Example \$175,000 x 5% = \$8,750 equaling the contract price of \$183,750. Real Estate sale subject to the seller's confirmation.

Additional Details:

Year Built	2000
Lot Acres	1.37
Lot Dimensions	200x300
Garage Stalls	2
School District	181
Taxes	\$1,045
Taxes with Assessments	\$1,045
Tax Year	2024

Additional Features:

Basement: None **Fuel:** Propane **Garage:** 2 **Heat:** Forced Air **Sewer:** Mound Septic, Septic System Compliant - Yes **Water:** Submersible - 4 Inch, Drilled **Air Conditioning:** Central Air

Driving Directions:

From East Brainerd at the lights of Hwy 210 & Hwy 25 or Hwy 18 & 210, go south on Hwy 210 to Eide Road



Listed By:
Cummings Janzen Realty, Inc

Affinity Real Estate Inc. participates in the Regional Multiple Listing Service of Minnesota, Inc Broker Reciprocity (sm) program, allowing us to display other broker's listings on our website. All properties are subject to prior sale, change or withdrawal.



Call Affinity Real Estate
218-237-3333
info@affinityrealestate.com



Affinity Real Estate - 600 Park Avenue South - Park Rapids MN 56470



website: www.AffinityRealEstate.com | email: info@affinityrealestate.com | office: 218-237-3333 | fax: 218-237-3377

Affinity
REAL ESTATE INC

\$1
MLS 6761323 Residential
14118 Eide Road
Brainerd MN 56401



website: www.AffinityRealEstate.com | email: info@affinityrealestate.com | office: 218-237-3333 | fax: 218-237-3377

Affinity
REAL ESTATE INC

\$1
MLS 6761323 Residential
14118 Eide Road
Brainerd MN 56401



website: www.AffinityRealEstate.com | email: info@affinityrealestate.com | office: 218-237-3333 | fax: 218-237-3377



\$1
 MLS 6761323 Residential
 14118 Eide Road
 Brainerd MN 56401



website: www.AffinityRealEstate.com | email: info@affinityrealestate.com | office: 218-237-3333 | fax: 218-237-3377

Affinity
REAL ESTATE INC

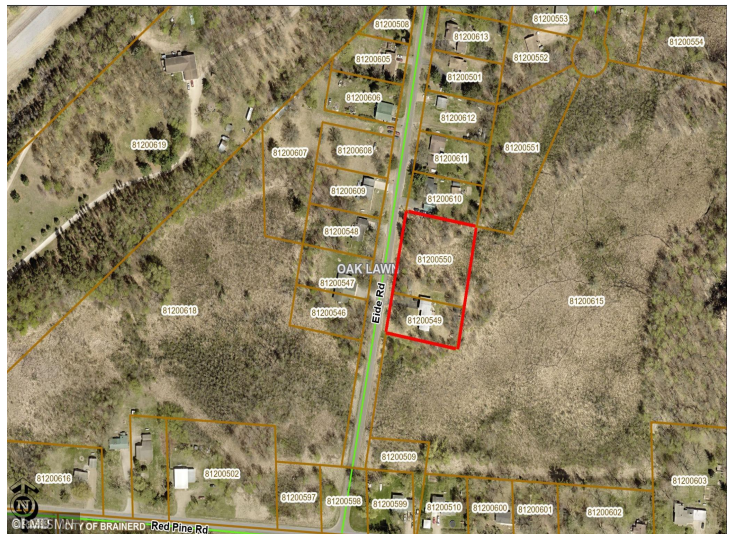
\$1
MLS 6761323 Residential
14118 Eide Road
Brainerd MN 56401



website: www.AffinityRealEstate.com | email: info@affinityrealestate.com | office: 218-237-3333 | fax: 218-237-3377

Affinity
REAL ESTATE INC

\$1
MLS 6761323 Residential
14118 Eide Road
Brainerd MN 56401



website: www.AffinityRealEstate.com | email: info@affinityrealestate.com | office: 218-237-3333 | fax: 218-237-3377



\$1
 MLS 6761323 Residential
 14118 Eide Road
 Brainerd MN 56401