



MLS 6761460 Lake Land

**\$1**

**Description:**

Tract 1 (5.01±AC) The auction will be held in person and online August 27 at 5PM. Property preview is August 16 from noon to 4PM. This listing is for Tract 1. There are 10 tracts total.

5.01± acre lot with 230± ft of lakeshore on Rock Lake. Accessed by township-maintained road and access to power. This lot is heavily wooded, providing privacy, natural beauty, and immediate recreational appeal.

With no covenants or restrictions, solid infrastructure already in place, and buildable terrain throughout, this is a turnkey opportunity to create your forever home or weekend cabin.

Rock Lake is a 1,048-acre lake well known for its excellent panfish fishing, along with opportunities for walleye, bass, and pike. It's also highly regarded for late-season waterfowl hunting. Whitetail deer, turkey, and bear frequent the area, making this an all-season destination.

- \*Wooded lot with privacy and mature trees throughout
- \*Township road frontage and power access at the road
- \*Infrastructure in place – ready for your home or lake cabin build
- \*No covenants or restrictions – use as you see fit
- \*Excellent fishing and outstanding late-season waterfowl hunting
- \*Deer, turkey, and bear are frequent visitors
- \*Just 8 miles northeast of Detroit Lakes and close to Tamarac Wildlife Refuge

**Additional Details:**

Lot Acres	5.01
Lot Dimensions	5.01±
School District	22
Taxes	\$1
Taxes with Assessments	\$1
Tax Year	2025

**Additional Features:**



Listed By:  
Whitetail Properties Real Estate

**Driving Directions:**

Affinity Real Estate Inc. participates in the Regional Multiple Listing Service of Minnesota's Broker Reciprocity (RM) program, allowing us to display other broker's listings on our website. All properties are subject to prior sale, change or withdrawal.



**Call Affinity Real Estate**

**218-237-3333**

**info@affinityrealestate.com**

Rock Lake Rd.



**Affinity Real Estate - 600 Park Avenue South - Park Rapids MN 56470**



website: [www.AffinityRealEstate.com](http://www.AffinityRealEstate.com) | email: [info@affinityrealestate.com](mailto:info@affinityrealestate.com) | office: 218-237-3333 | fax: 218-237-3377



**\$1**  
 MLS 6761460 Lake Land  
 (Tract 1) TBD Rock Lake  
 Road  
 Rochert MN 56578





website: [www.AffinityRealEstate.com](http://www.AffinityRealEstate.com) | email: [info@affinityrealestate.com](mailto:info@affinityrealestate.com) | office: 218-237-3333 | fax: 218-237-3377



**\$1**  
MLS 6761460 Lake Land  
(Tract 1) TBD Rock Lake  
Road  
Rochert MN 56578





website: [www.AffinityRealEstate.com](http://www.AffinityRealEstate.com) | email: [info@affinityrealestate.com](mailto:info@affinityrealestate.com) | office: 218-237-3333 | fax: 218-237-3377



**\$1**  
 MLS 6761460 Lake Land  
 (Tract 1) TBD Rock Lake  
 Road  
 Rochert MN 56578



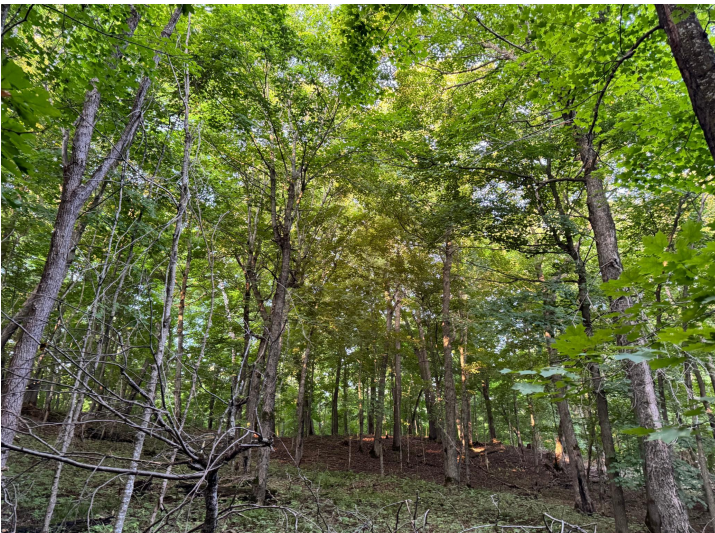


website: [www.AffinityRealEstate.com](http://www.AffinityRealEstate.com) | email: [info@affinityrealestate.com](mailto:info@affinityrealestate.com) | office: 218-237-3333 | fax: 218-237-3377



**\$1**  
 MLS 6761460 Lake Land  
 (Tract 1) TBD Rock Lake  
 Road  
 Rochert MN 56578





website: [www.AffinityRealEstate.com](http://www.AffinityRealEstate.com) | email: [info@affinityrealestate.com](mailto:info@affinityrealestate.com) | office: 218-237-3333 | fax: 218-237-3377



**\$1**  
 MLS 6761460 Lake Land  
 (Tract 1) TBD Rock Lake  
 Road  
 Rochert MN 56578





website: [www.AffinityRealEstate.com](http://www.AffinityRealEstate.com) | email: [info@affinityrealestate.com](mailto:info@affinityrealestate.com) | office: 218-237-3333 | fax: 218-237-3377



**\$1**  
MLS 6761460 Lake Land  
(Tract 1) TBD Rock Lake  
Road  
Rochert MN 56578





website: [www.AffinityRealEstate.com](http://www.AffinityRealEstate.com) | email: [info@affinityrealestate.com](mailto:info@affinityrealestate.com) | office: 218-237-3333 | fax: 218-237-3377



**\$1**  
 MLS 6761460 Lake Land  
 (Tract 1) TBD Rock Lake  
 Road  
 Rochert MN 56578





website: [www.AffinityRealEstate.com](http://www.AffinityRealEstate.com) | email: [info@affinityrealestate.com](mailto:info@affinityrealestate.com) | office: 218-237-3333 | fax: 218-237-3377



**\$1**  
 MLS 6761460 Lake Land  
 (Tract 1) TBD Rock Lake  
 Road  
 Rochert MN 56578