



MLS 6761479 Lake Land

\$1

Description:

Tract 2 (5.25±) The auction will be held August 27 at 5PM. (online and in-person) Property preview is August 16 from noon to 4PM. This listing is for Tract 2. There are 10 tracts in total.

5.25± acre lot with 223± of lakeshore on Rock Lake. Accessed by township-maintained road and access to power. This lot is heavily wooded, providing privacy, natural beauty, and immediate recreational appeal.

With no covenants or restrictions, solid infrastructure already in place, and buildable terrain throughout, this is a turnkey opportunity to create your forever home or weekend cabin.

Rock Lake is a 1,048-acre lake well known for its excellent panfish fishing, along with opportunities for walleye, bass, and pike. It's also highly regarded for late-season waterfowl hunting. Whitetail deer, turkey, and bear frequent the area, making this an all-season destination.

- *Excellent location
- *Wooded lot
- *Solid fishing and better waterfowl hunting
- *Deer, turkey, and bear
- *Close to Tamarac Wildlife Refuge
- *Eight miles NE of Detroit Lakes
- *No covenants or restrictions
- *Buildable
- *Large lake
- *Private yet easily accessible

Additional Details:

Lot Acres 5.25
Lot Dimensions 5.25±
School District 22

Taxes \$1

1  Listed By: Whitetail Properties Real Estate

Tax year 2025
Affinity Real Estate Inc. participates in the Regional Multiple Listing Service of Minnesota, Inc Broker Reciprocity (sm) program, allowing us to display other broker's listings on our website. All properties are subject to prior sale, change or withdrawal.

Driving Directions:



Call Affinity Real Estate
218-237-3333
info@affinityrealestate.com



Affinity Real Estate - 600 Park Avenue South - Park Rapids MN 56470



website: www.AffinityRealEstate.com | email: info@affinityrealestate.com | office: 218-237-3333 | fax: 218-237-3377



\$1
 MLS 6761479 Lake Land
 (Tract 2) TBD Rock Lake
 Road
 Rochert MN 56578



website: www.AffinityRealEstate.com | email: info@affinityrealestate.com | office: 218-237-3333 | fax: 218-237-3377



\$1
 MLS 6761479 Lake Land
 (Tract 2) TBD Rock Lake
 Road
 Rochert MN 56578



website: www.AffinityRealEstate.com | email: info@affinityrealestate.com | office: 218-237-3333 | fax: 218-237-3377



\$1
 MLS 6761479 Lake Land
 (Tract 2) TBD Rock Lake
 Road
 Rochert MN 56578



website: www.AffinityRealEstate.com | email: info@affinityrealestate.com | office: 218-237-3333 | fax: 218-237-3377



\$1
 MLS 6761479 Lake Land
 (Tract 2) TBD Rock Lake
 Road
 Rochert MN 56578



website: www.AffinityRealEstate.com | email: info@affinityrealestate.com | office: 218-237-3333 | fax: 218-237-3377



\$1
MLS 6761479 Lake Land
(Tract 2) TBD Rock Lake
Road
Rochert MN 56578



website: www.AffinityRealEstate.com | email: info@affinityrealestate.com | office: 218-237-3333 | fax: 218-237-3377



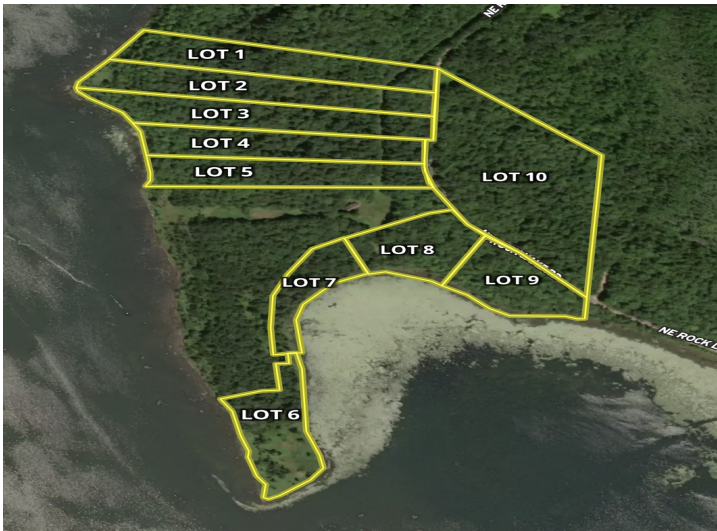
\$1
MLS 6761479 Lake Land
(Tract 2) TBD Rock Lake
Road
Rochert MN 56578



website: www.AffinityRealEstate.com | email: info@affinityrealestate.com | office: 218-237-3333 | fax: 218-237-3377



\$1
MLS 6761479 Lake Land
(Tract 2) TBD Rock Lake
Road
Rochert MN 56578



website: www.AffinityRealEstate.com | email: info@affinityrealestate.com | office: 218-237-3333 | fax: 218-237-3377



\$1
 MLS 6761479 Lake Land
 (Tract 2) TBD Rock Lake
 Road
 Rochert MN 56578