



MLS 6761485 Lake Land

\$1

Description:

Tract 3 (5.03±AC) The auction will be held in person and online on August 27 at 5PM. The property preview is August 16 from noon-4pm. This listing is for Tract 3. There are 10 tracts in total. 5.03± acre lot with 320± lakeshore on Rock Lake. Accessed by township-maintained road and access to power. This lot is heavily wooded, providing privacy, natural beauty, and immediate recreational appeal.

With no covenants or restrictions, solid infrastructure already in place, and buildable terrain throughout, this is a turnkey opportunity to create your forever home or weekend cabin.

Rock Lake is a 1,048-acre lake well known for its excellent panfish fishing, along with opportunities for walleye, bass, and pike. It's also highly regarded for late-season waterfowl hunting. Whitetail deer, turkey, and bear frequent the area, making this an all-season destination.

- *Excellent location
- *Wooded lot
- *Solid fishing and better waterfowl hunting
- *Deer, turkey, and bear
- *Close to Tamarac Wildlife Refuge
- *Eight miles NE of Detroit Lakes
- *No covenants or restrictions
- *Buildable
- *Large lake
- *Private yet easily accessible

Additional Details:

Lot Acres	5.03
Lot Dimensions	5.03±
School District	22
Taxes	\$1

Taxes with Assessments	\$1
Listed By:	2025
	Whitetail Properties Real Estate

Additional Features:
Affinity Real Estate Inc. participates in the Regional Multiple Listing Service of Minnesota, Inc Broker Reciprocity (sm) program, allowing us to display other broker's listings on our website. All properties are subject to prior sale, change or withdrawal.

Driving Directions:

From Detroit Lakes, east on State Hwy 34, north on County 25, east on Co Rd 32, north on Co Rd 27 to NE Rock Lake Rd.



Call Affinity Real Estate

218-237-3333

info@affinityrealestate.com



Affinity Real Estate - 600 Park Avenue South - Park Rapids MN 56470



website: www.AffinityRealEstate.com | email: info@affinityrealestate.com | office: 218-237-3333 | fax: 218-237-3377



\$1
 MLS 6761485 Lake Land
 (Tract 3) TBD Rock Lake
 Road
 Rochert MN 56578



website: www.AffinityRealEstate.com | email: info@affinityrealestate.com | office: 218-237-3333 | fax: 218-237-3377



\$1
 MLS 6761485 Lake Land
 (Tract 3) TBD Rock Lake
 Road
 Rochert MN 56578



website: www.AffinityRealEstate.com | email: info@affinityrealestate.com | office: 218-237-3333 | fax: 218-237-3377



\$1
 MLS 6761485 Lake Land
 (Tract 3) TBD Rock Lake
 Road
 Rochert MN 56578



website: www.AffinityRealEstate.com | email: info@affinityrealestate.com | office: 218-237-3333 | fax: 218-237-3377



\$1
 MLS 6761485 Lake Land
 (Tract 3) TBD Rock Lake
 Road
 Rochert MN 56578



website: www.AffinityRealEstate.com | email: info@affinityrealestate.com | office: 218-237-3333 | fax: 218-237-3377



\$1
 MLS 6761485 Lake Land
 (Tract 3) TBD Rock Lake
 Road
 Rochert MN 56578



website: www.AffinityRealEstate.com | email: info@affinityrealestate.com | office: 218-237-3333 | fax: 218-237-3377



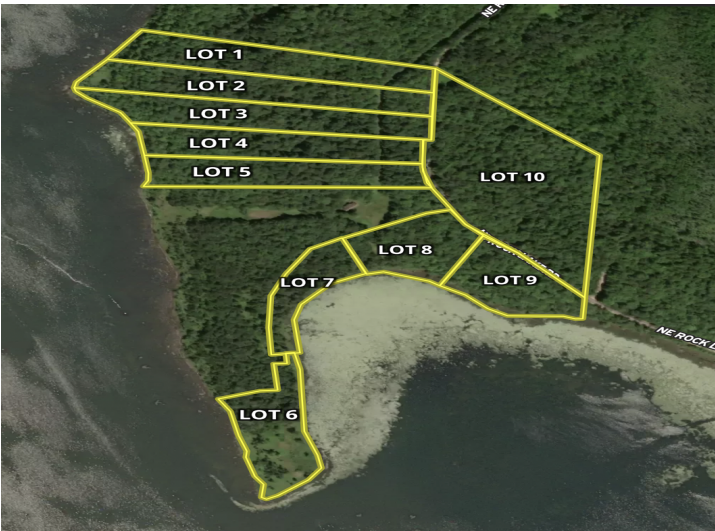
\$1
 MLS 6761485 Lake Land
 (Tract 3) TBD Rock Lake
 Road
 Rochert MN 56578



website: www.AffinityRealEstate.com | email: info@affinityrealestate.com | office: 218-237-3333 | fax: 218-237-3377



\$1
 MLS 6761485 Lake Land
 (Tract 3) TBD Rock Lake
 Road
 Rochert MN 56578



website: www.AffinityRealEstate.com | email: info@affinityrealestate.com | office: 218-237-3333 | fax: 218-237-3377



\$1
 MLS 6761485 Lake Land
 (Tract 3) TBD Rock Lake
 Road
 Rochert MN 56578