



MLS 6761497 Lake Land

\$1

#### Description:

Tract 5 (4.22±AC) The auction will be held both in person and online on August 27 at 5PM. The property preview is August 16 from noon to 4PM.

4.22± acre lot with 207± ft of frontage on Rock Lake. Accessed by township-maintained road and access to power. This lot is heavily wooded, providing privacy, natural beauty, and immediate recreational appeal.

With no covenants or restrictions, solid infrastructure already in place, and buildable terrain throughout, this is a turnkey opportunity to create your forever home or weekend cabin.


Rock Lake is a 1,048-acre lake well known for its excellent panfish fishing, along with opportunities for walleye, bass, and pike. It's also highly regarded for late-season waterfowl hunting. Whitetail deer, turkey, and bear frequent the area, making this an all-season destination.

- \*Infrastructure in place – ready for your home or lake cabin build
- \*No covenants or restrictions – use as you see fit
- \*Excellent fishing and outstanding late-season waterfowl hunting
- \*Deer, turkey, and bear are frequent visitors
- \*Just 8 miles northeast of Detroit Lakes and close to Tamarac Wildlife Refuge
- \*Township road frontage and power access at the road
- \*Wooded lot with privacy and mature trees throughout

#### Additional Details:

Lot Acres	4.22
Lot Dimensions	4.22±
School District	22
Taxes	\$230
Taxes with Assessments	\$230
Tax Year	2025

#### Additional Features:



Listed By:  
Whitetail Properties Real Estate

From Detroit Lakes, near the State in the Regional Municipality of 25, east of the road 22 North on Co Rd 22 to NE Rock Lake Rd.  
Service of Minnesota, Inc Broker Reciprocity (sm) program, allowing us to display other broker's listings on our website. All properties are subject to prior sale, change or withdrawal.



Call Affinity Real Estate

218-237-3333

info@affinityrealestate.com



Affinity Real Estate - 600 Park Avenue South - Park Rapids MN 56470



website: [www.AffinityRealEstate.com](http://www.AffinityRealEstate.com) | email: [info@affinityrealestate.com](mailto:info@affinityrealestate.com) | office: 218-237-3333 | fax: 218-237-3377



**\$1**  
 MLS 6761497 Lake Land  
 (Tract 5) 24612 Rock Lake  
 Road  
 Rochert MN 56578





website: [www.AffinityRealEstate.com](http://www.AffinityRealEstate.com) | email: [info@affinityrealestate.com](mailto:info@affinityrealestate.com) | office: 218-237-3333 | fax:218-237-3377



**\$1**  
MLS 6761497 Lake Land  
(Tract 5) 24612 Rock Lake  
Road  
Rochert MN 56578





website: [www.AffinityRealEstate.com](http://www.AffinityRealEstate.com) | email: [info@affinityrealestate.com](mailto:info@affinityrealestate.com) | office: 218-237-3333 | fax: 218-237-3377



**\$1**  
 MLS 6761497 Lake Land  
 (Tract 5) 24612 Rock Lake  
 Road  
 Rochert MN 56578





website: [www.AffinityRealEstate.com](http://www.AffinityRealEstate.com) | email: [info@affinityrealestate.com](mailto:info@affinityrealestate.com) | office: 218-237-3333 | fax: 218-237-3377



**\$1**  
 MLS 6761497 Lake Land  
 (Tract 5) 24612 Rock Lake  
 Road  
 Rochert MN 56578



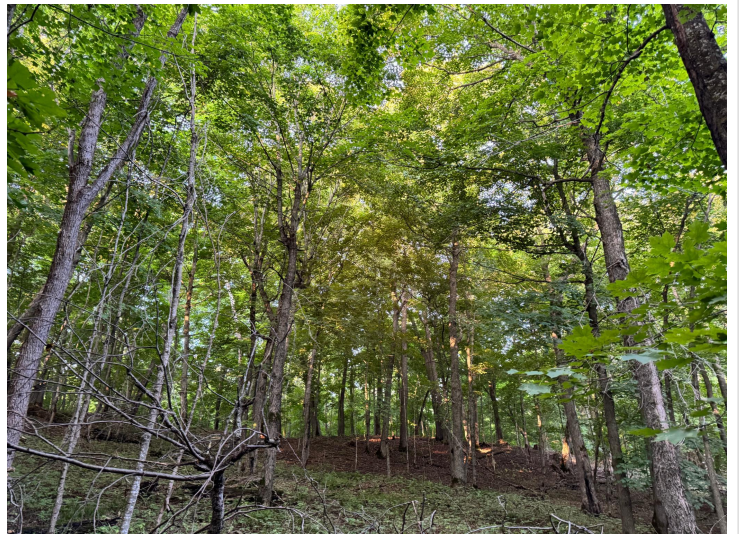


website: [www.AffinityRealEstate.com](http://www.AffinityRealEstate.com) | email: [info@affinityrealestate.com](mailto:info@affinityrealestate.com) | office: 218-237-3333 | fax: 218-237-3377



**\$1**  
 MLS 6761497 Lake Land  
 (Tract 5) 24612 Rock Lake  
 Road  
 Rochert MN 56578





website: [www.AffinityRealEstate.com](http://www.AffinityRealEstate.com) | email: [info@affinityrealestate.com](mailto:info@affinityrealestate.com) | office: 218-237-3333 | fax: 218-237-3377



**\$1**  
MLS 6761497 Lake Land  
(Tract 5) 24612 Rock Lake  
Road  
Rochert MN 56578



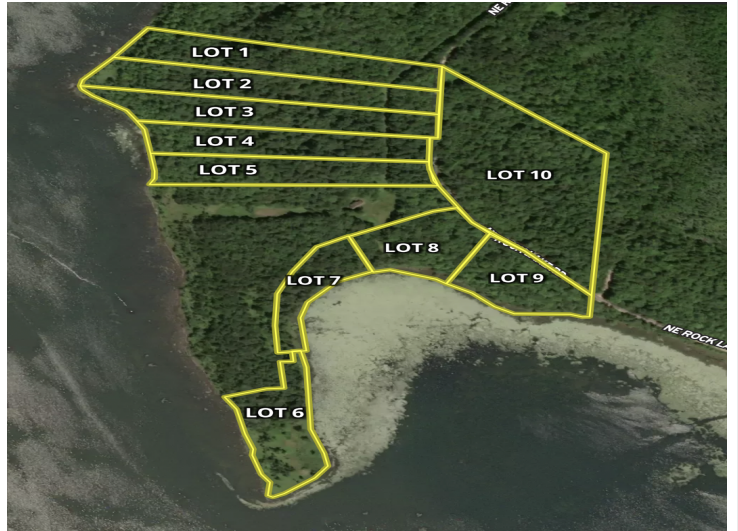


website: [www.AffinityRealEstate.com](http://www.AffinityRealEstate.com) | email: [info@affinityrealestate.com](mailto:info@affinityrealestate.com) | office: 218-237-3333 | fax: 218-237-3377



**\$1**  
 MLS 6761497 Lake Land  
 (Tract 5) 24612 Rock Lake  
 Road  
 Rochert MN 56578





website: [www.AffinityRealEstate.com](http://www.AffinityRealEstate.com) | email: [info@affinityrealestate.com](mailto:info@affinityrealestate.com) | office: 218-237-3333 | fax: 218-237-3377



**\$1**  
 MLS 6761497 Lake Land  
 (Tract 5) 24612 Rock Lake  
 Road  
 Rochert MN 56578