



MLS 6761511 Lake Land

**\$1**

**Description:**

Tract 7 (2.52±AC) The auction will be held online and in person on August 27 at 5PM. Property preview will be held August 16 from noon to 4PM. This listing is for Tract 7, there are 10 tracts in total. 2.52± acre lot with 700± ft of lakeshore on Rock Lake. Accessed by township-maintained road and access to power. This lot is heavily wooded, providing privacy, natural beauty, and immediate recreational appeal.

With no covenants or restrictions, solid infrastructure already in place, and buildable terrain throughout, this is a turnkey opportunity to create your forever home or weekend cabin.

Rock Lake is a 1,048-acre lake well known for its excellent panfish fishing, along with opportunities for walleye, bass, and pike. It's also highly regarded for late-season waterfowl hunting. Whitetail deer, turkey, and bear frequent the area, making this an all-season destination.

- \*Excellent location
- \*Choose from 9 available wooded lots
- \*Solid fishing and better waterfowl hunting
- \*Deer, turkey, and bear
- \*Close to Tamarac Wildlife Refuge
- \*Eight miles NE of Detroit Lakes
- \*No covenants or restrictions
- \*Buildable
- \*Large lake
- \*Something for everyone
- \*Private yet easily accessible

**Additional Details:**

Lot Acres 2.52  
Lot Dimensions 2.52±  
School District 22

Taxes \$1

1  Listed By: \$1  
Whitetail Properties Real Estate

Tax year 2025  
Affinity Real Estate Inc. participates in the Regional Multiple Listing Service of Minnesota, Inc Broker Reciprocity (sm) program, allowing us to display other broker's listings on our website. All properties are subject to prior sale, change or withdrawal.

**Driving Directions:**



**Call Affinity Real Estate**  
**218-237-3333**  
**info@affinityrealestate.com**



**Affinity Real Estate - 600 Park Avenue South - Park Rapids MN 56470**





website: [www.AffinityRealEstate.com](http://www.AffinityRealEstate.com) | email: [info@affinityrealestate.com](mailto:info@affinityrealestate.com) | office: 218-237-3333 | fax: 218-237-3377



**\$1**  
 MLS 6761511 Lake Land  
 (Tract 7) TBD Rock Lake  
 Road  
 Rochert MN 56578





website: [www.AffinityRealEstate.com](http://www.AffinityRealEstate.com) | email: [info@affinityrealestate.com](mailto:info@affinityrealestate.com) | office: 218-237-3333 | fax: 218-237-3377



**\$1**  
 MLS 6761511 Lake Land  
 (Tract 7) TBD Rock Lake  
 Road  
 Rochert MN 56578



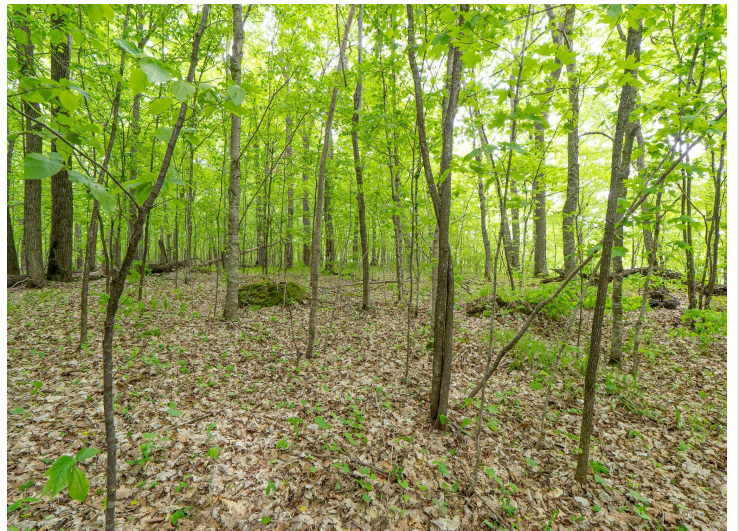


website: [www.AffinityRealEstate.com](http://www.AffinityRealEstate.com) | email: [info@affinityrealestate.com](mailto:info@affinityrealestate.com) | office: 218-237-3333 | fax: 218-237-3377



**\$1**  
 MLS 6761511 Lake Land  
 (Tract 7) TBD Rock Lake  
 Road  
 Rochert MN 56578





website: [www.AffinityRealEstate.com](http://www.AffinityRealEstate.com) | email: [info@affinityrealestate.com](mailto:info@affinityrealestate.com) | office: 218-237-3333 | fax: 218-237-3377



**\$1**  
 MLS 6761511 Lake Land  
 (Tract 7) TBD Rock Lake  
 Road  
 Rochert MN 56578





website: [www.AffinityRealEstate.com](http://www.AffinityRealEstate.com) | email: [info@affinityrealestate.com](mailto:info@affinityrealestate.com) | office: 218-237-3333 | fax: 218-237-3377



**\$1**  
MLS 6761511 Lake Land  
(Tract 7) TBD Rock Lake  
Road  
Rochert MN 56578