



MLS 6761568 Lake Home

\$1,700,000

3,001 sq ft
5 bedrooms
3 baths

8561 Nottingham Road
Nisswa MN 56468

Waterfront: Margaret Lake (Lake
Shore City)

Status: Active

Description:

Embrace lake life with this to-be-built, custom designed home nestled on the shores of beautiful Lake Margaret, a highly sought after part of the Gull Lake chain. Boasting 55 feet of pristine lakeshore, this 5-bedroom, 3-bathroom residence offers the perfect blend of luxury, comfort, and up north charm.

Built by a renowned Lake Minnetonka area builder known for superior craftsmanship and high- end finishes, this 3,000 sq. ft masterpiece will be tailored for effortless entertaining and year-round living.

Additional Details:

Year Built	2025
Lot Acres	0.6
Lot Dimensions	50x443x55x460
Garage Stalls	2
School District	181
Taxes	\$2,456
Taxes with Assessments	\$2,522
Tax Year	2025

Additional Features:

Basement: Finished, Full, Concrete, Storage Space, Walkout **Fuel:** Natural Gas **Garage:** 2 **Heat:** Forced Air **Sewer:** Private Sewer **Water:** Private **Air Conditioning:** Central Air

Driving Directions:

From Nisswa go south on 371 to CR-77 turn right. Turn right on Woodland and another right on Nottingham. Property on the left.



Listed By:
Counselor Realty Brainerd Lakes

Affinity Real Estate Inc. participates in the Regional Multiple Listing Service of Minnesota, Inc Broker Reciprocity (sm) program, allowing us to display other broker's listings on our website. All properties are subject to prior sale, change or withdrawal.



Call Affinity Real Estate

218-237-3333

info@affinityrealestate.com



Affinity Real Estate - 600 Park Avenue South - Park Rapids MN 56470

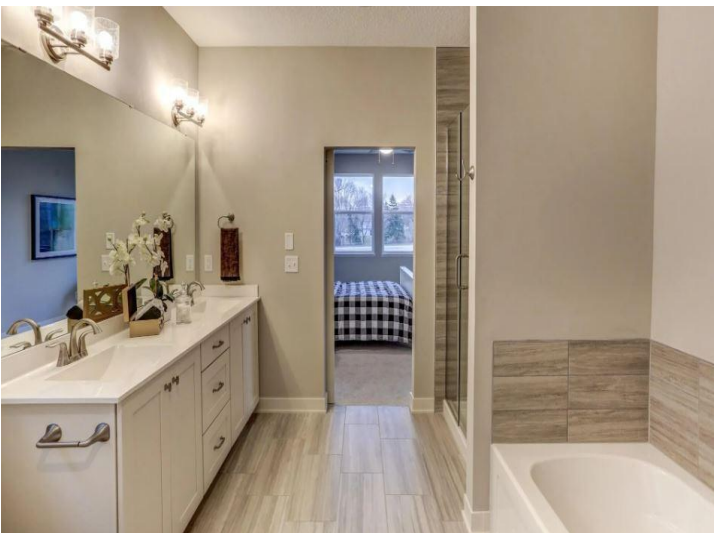


website: www.AffinityRealEstate.com | email: info@affinityrealestate.com | office: 218-237-3333 | fax: 218-237-3377

Affinity
REAL ESTATE INC

\$1,700,000

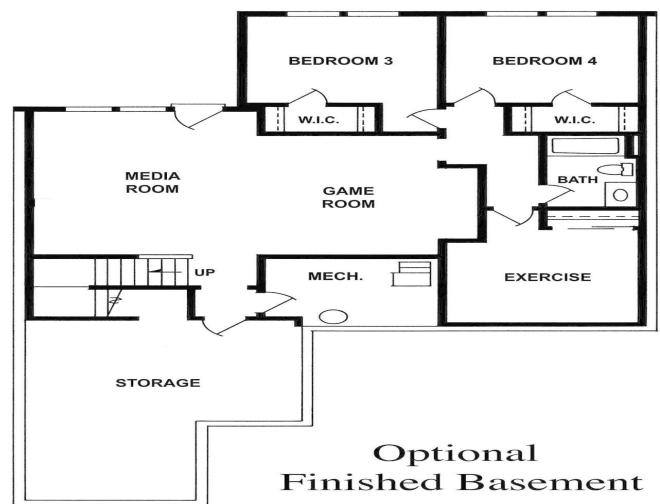
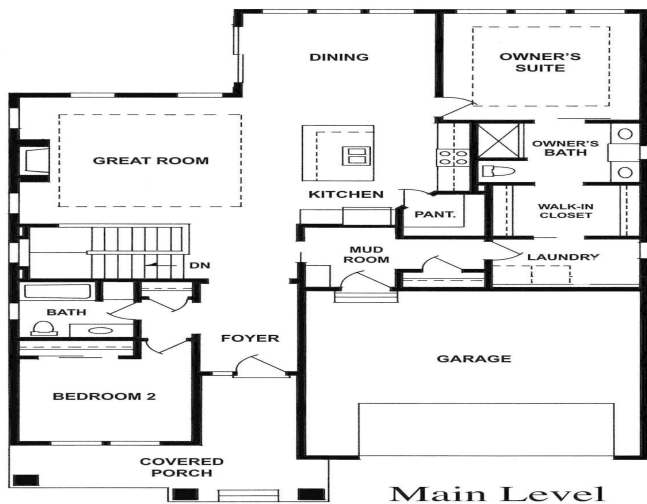
MLS 6761568 Lake Home
8561 Nottingham Road
Nisswa MN 56468



website: www.AffinityRealEstate.com | email: info@affinityrealestate.com | office: 218-237-3333 | fax: 218-237-3377



\$1,700,000
 MLS 6761568 Lake Home
 8561 Nottingham Road
 Nisswa MN 56468



website: www.AffinityRealEstate.com | email: info@affinityrealestate.com | office: 218-237-3333 | fax: 218-237-3377



\$1,700,000

MLS 6761568 Lake Home
8561 Nottingham Road
Nisswa MN 56468