



MLS 6761592 Lake Home

**\$2,995,000**

5,226 sq ft  
3 bedrooms  
4 baths

13380 Rush Harbor Drive  
Crosslake MN 56442

Waterfront: Rush-Hen

Status: Active

#### Description:

Truly a Once-In-A-Lifetime opportunity to own your own private point on the highly sought after Whitefish Chain of Lakes...enjoy over an acre of beautifully manicured grounds with over 900' of shoreline and Spectacular Sunsets across Rush Lake. This architecturally designed Masterpiece is a blend of timeless craftsmanship, exceptional high-end finishes and meticulous thoughtful detail throughout. The light-filled main level was designed with entertaining large groups in mind and features a stunning entrance with a gorgeous Cherrywood staircase, a massive great room with soaring cathedral beamed ceilings, 2 stone wood burning fireplaces, walls of lakeside glass, a dream kitchen equipped with a huge breakfast bar-granite countertops-spacious walk-in pantry-a private wine cellar-a built-in wet bar with easy access to the private lakeside oasis...experience outdoor living at its finest with beautiful perennial gardens, custom water features, a pergola, your very own putting green, an expansive fieldstone patio, a well-appointed outdoor kitchen and gas firepit. Other impressive highlights of this great property include a formal dining, luxury hardwood flooring throughout, a casual sitting area/sunroom with fireplace, a huge main floor primary suite with a spa-like bath-dual closets, a personal office, main level laundry, two additional upper-level generous sized ensuites...one has a private lakeside deck, a loft like sitting area and a long paved driveway that welcomes guest at the entrance with an artist-crafted Elk Horn electric gate...nothing but class here!

#### Additional Details:

Year Built	2010
Lot Acres	1.26
Lot Dimensions	448 x 185 x 426 x 54
Garage Stalls	2
School District	186
Taxes	\$22,516
Taxes with Assessments	\$22,516
Tax Year	2025

#### Additional Features:

**Fuel:** Natural Gas, Solar **Heat:** Forced Air, Geothermal, Radiant Floor

#### Driving Directions:

From Highway 66, take the RIGHT SQUARE AT THE JCT. OF 66 & 115 SOUTH ON 66 FOR 6.1 MILE TO, LEFT ON RUSH HARBOR DRIVE FOR 0.2 MILE TO THE HOME ON THE POINT. \*\*NO SIGN ON THE ROAD\*\* FOLLOW IN FOR 0.2 MILE TO THE HOME ON THE POINT. \*\*NO SIGN ON THE ROAD\*\*  
Affinity Real Estate Inc. participates in the Regional Multiple Listing Service of Minnesota, Inc Broker Reciprocity (sm) program, allowing us to display other broker's listings on our website. All properties are subject to prior sale, change or withdrawal.



**Call Affinity Real Estate**

**218-237-3333**

**info@affinityrealestate.com**



**Affinity Real Estate - 600 Park Avenue South - Park Rapids MN 56470**



website: [www.AffinityRealEstate.com](http://www.AffinityRealEstate.com) | email: [info@affinityrealestate.com](mailto:info@affinityrealestate.com) | office: 218-237-3333 | fax: 218-237-3377

**Affinity**  
REAL ESTATE INC

**\$2,995,000**

MLS 6761592 Lake Home  
13380 Rush Harbor Drive  
Crosslake MN 56442



website: [www.AffinityRealEstate.com](http://www.AffinityRealEstate.com) | email: [info@affinityrealestate.com](mailto:info@affinityrealestate.com) | office: 218-237-3333 | fax: 218-237-3377

**Affinity**  
REAL ESTATE INC

**\$2,995,000**

MLS 6761592 Lake Home  
13380 Rush Harbor Drive  
Crosslake MN 56442



website: [www.AffinityRealEstate.com](http://www.AffinityRealEstate.com) | email: [info@affinityrealestate.com](mailto:info@affinityrealestate.com) | office: 218-237-3333 | fax: 218-237-3377

**Affinity**  
REAL ESTATE INC

**\$2,995,000**

MLS 6761592 Lake Home  
13380 Rush Harbor Drive  
Crosslake MN 56442

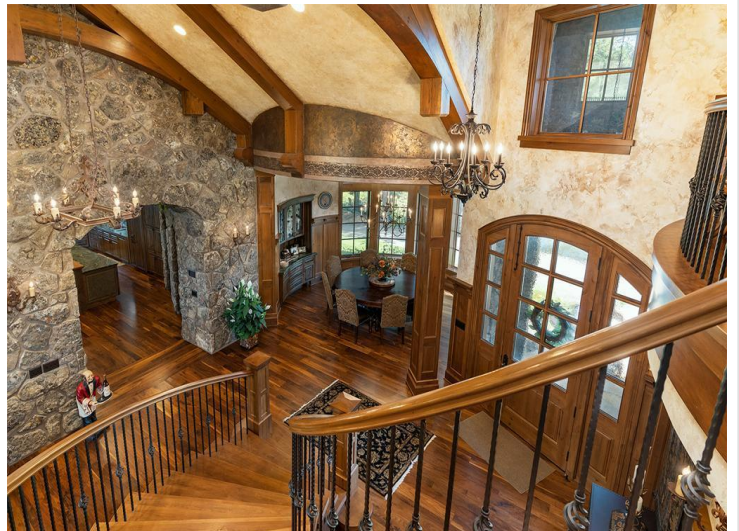


website: [www.AffinityRealEstate.com](http://www.AffinityRealEstate.com) | email: [info@affinityrealestate.com](mailto:info@affinityrealestate.com) | office: 218-237-3333 | fax: 218-237-3377

**Affinity**  
REAL ESTATE INC

**\$2,995,000**

MLS 6761592 Lake Home  
13380 Rush Harbor Drive  
Crosslake MN 56442

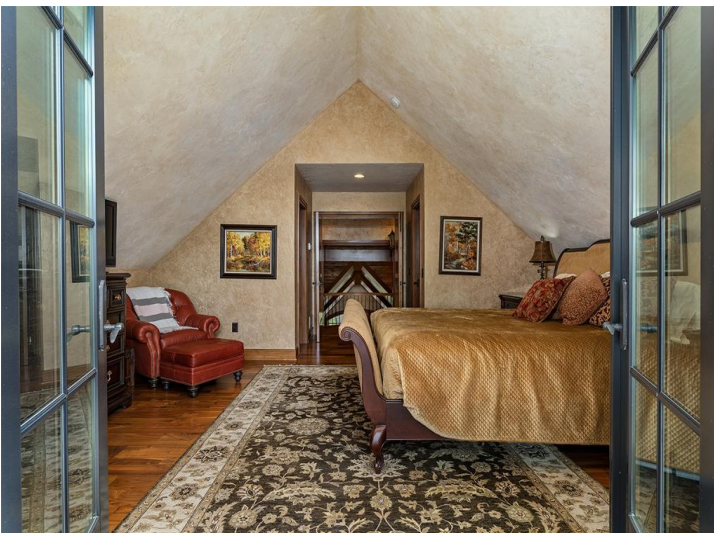
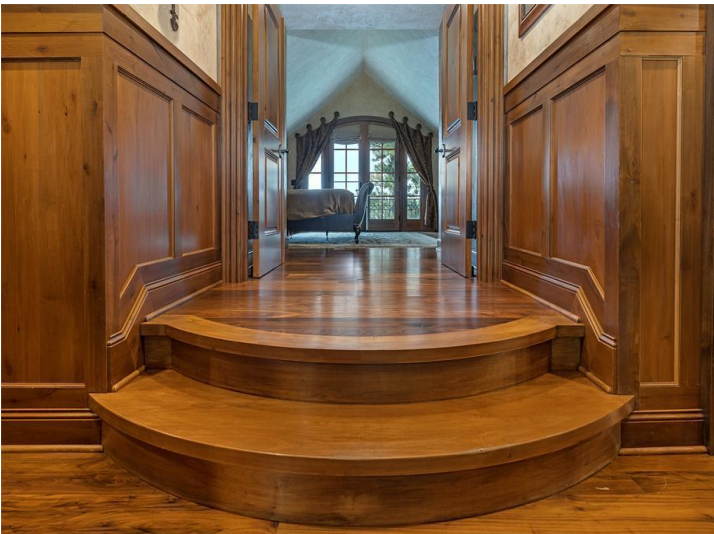


website: [www.AffinityRealEstate.com](http://www.AffinityRealEstate.com) | email: [info@affinityrealestate.com](mailto:info@affinityrealestate.com) | office: 218-237-3333 | fax: 218-237-3377

**Affinity**  
REAL ESTATE INC

**\$2,995,000**

MLS 6761592 Lake Home  
13380 Rush Harbor Drive  
Crosslake MN 56442



website: [www.AffinityRealEstate.com](http://www.AffinityRealEstate.com) | email: [info@affinityrealestate.com](mailto:info@affinityrealestate.com) | office: 218-237-3333 | fax: 218-237-3377

**Affinity**  
REAL ESTATE INC

**\$2,995,000**

MLS 6761592 Lake Home  
13380 Rush Harbor Drive  
Crosslake MN 56442

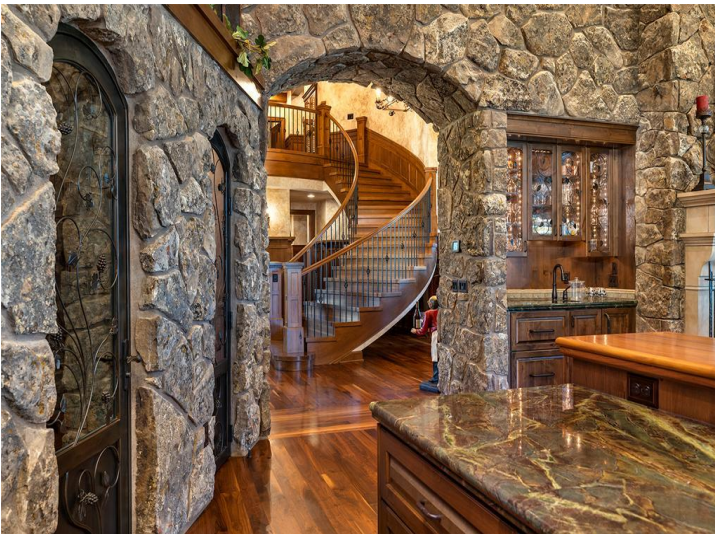


website: [www.AffinityRealEstate.com](http://www.AffinityRealEstate.com) | email: [info@affinityrealestate.com](mailto:info@affinityrealestate.com) | office: 218-237-3333 | fax: 218-237-3377

**Affinity**  
REAL ESTATE INC

**\$2,995,000**

MLS 6761592 Lake Home  
13380 Rush Harbor Drive  
Crosslake MN 56442



website: [www.AffinityRealEstate.com](http://www.AffinityRealEstate.com) | email: [info@affinityrealestate.com](mailto:info@affinityrealestate.com) | office: 218-237-3333 | fax: 218-237-3377

**Affinity**  
REAL ESTATE INC

**\$2,995,000**

MLS 6761592 Lake Home  
13380 Rush Harbor Drive  
Crosslake MN 56442



website: [www.AffinityRealEstate.com](http://www.AffinityRealEstate.com) | email: [info@affinityrealestate.com](mailto:info@affinityrealestate.com) | office: 218-237-3333 | fax: 218-237-3377



**\$2,995,000**

MLS 6761592 Lake Home  
13380 Rush Harbor Drive  
Crosslake MN 56442