



MLS 6761620 Lake Home

**\$1,049,000**

2,915 sq ft  
4 bedrooms  
3 baths

5916 Ojibwa Road  
Brainerd MN 56401

Waterfront: Round Lake  
(18037300)

Status: Pending

**Description:**

ROUND LAKE-GULL CHAIN. Located in the heart of the Nisswa Lakes Area, on the east shore of The Gull Chain's Round Lake, sits this charming 4-bedroom, 3-bath, year-round retreat. The property features park-like grounds, breathtaking sunset views, and a sugar-sand lake bottom with boat access to the entire Gull Chain of Lakes. Quality details of the home include a renovated kitchen/dining room with pantry and a fieldstone gas fireplace, a lakeside living room with panoramic lake views, a lakeside primary bedroom suite, a finished lower level with a spacious living room, a bedroom, and 3/4 bath, a lakeside covered porch, a lakeside paver stone patio, and a two stall detached garage. All you need are your swimsuits and fishing poles, this one comes furnished and includes a brand-new dock.

**Additional Details:**

Year Built	1975
Lot Acres	0.61
Lot Dimensions	100x276x100x266
Garage Stalls	2
School District	181
Taxes	\$5,203
Taxes with Assessments	\$5,228
Tax Year	2025

**Additional Features:**

**Basement:** Block, Finished, Full, Storage Space **Fuel:** Electric, Natural Gas **Garage:** 2 **Heat:** Baseboard, Ductless Mini-Split, Fireplace(s)  
**Sewer:** Private Sewer, Septic System Compliant - Yes, Tank with Drainage Field **Water:** Drilled, Private, Well **Air Conditioning:** Ductless Mini-Split

**Driving Directions:**

From Brainerd/Baxter N on Hwy 371 to Ojibwa Rd. E. (Right) on Ojibway to sign and property at #5916 on the left.



Listed By:  
Kurilla Real Estate LTD

Affinity Real Estate Inc. participates in the Regional Multiple Listing Service of Minnesota, Inc Broker Reciprocity (sm) program, allowing us to display other broker's listings on our website. All properties are subject to prior sale, change or withdrawal.



**Call Affinity Real Estate**

**218-237-3333**

**info@affinityrealestate.com**



**Affinity Real Estate - 600 Park Avenue South - Park Rapids MN 56470**





website: [www.AffinityRealEstate.com](http://www.AffinityRealEstate.com) | email: [info@affinityrealestate.com](mailto:info@affinityrealestate.com) | office: 218-237-3333 | fax: 218-237-3377

**Affinity**  
REAL ESTATE INC

**\$1,049,000**

MLS 6761620 Lake Home  
5916 Ojibwa Road  
Brainerd MN 56401





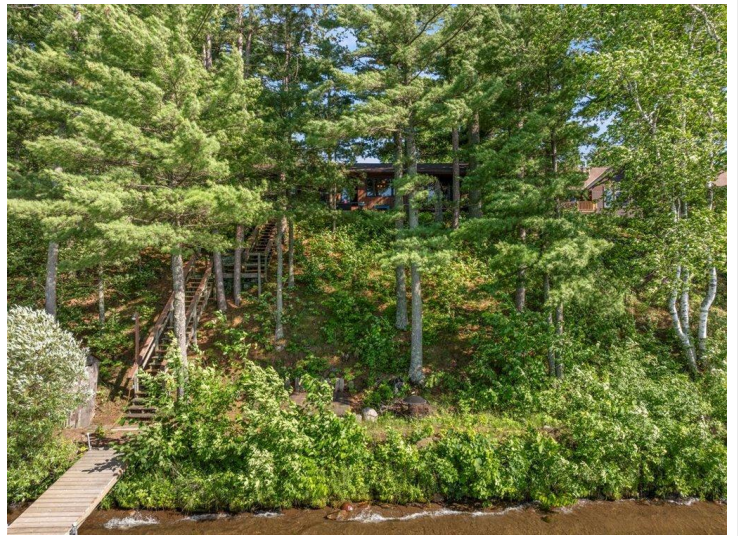
website: [www.AffinityRealEstate.com](http://www.AffinityRealEstate.com) | email: [info@affinityrealestate.com](mailto:info@affinityrealestate.com) | office: 218-237-3333 | fax: 218-237-3377

**Affinity**  
REAL ESTATE INC

**\$1,049,000**

MLS 6761620 Lake Home  
5916 Ojibwa Road  
Brainerd MN 56401





website: [www.AffinityRealEstate.com](http://www.AffinityRealEstate.com) | email: [info@affinityrealestate.com](mailto:info@affinityrealestate.com) | office: 218-237-3333 | fax: 218-237-3377



**\$1,049,000**

MLS 6761620 Lake Home  
5916 Ojibwa Road  
Brainerd MN 56401





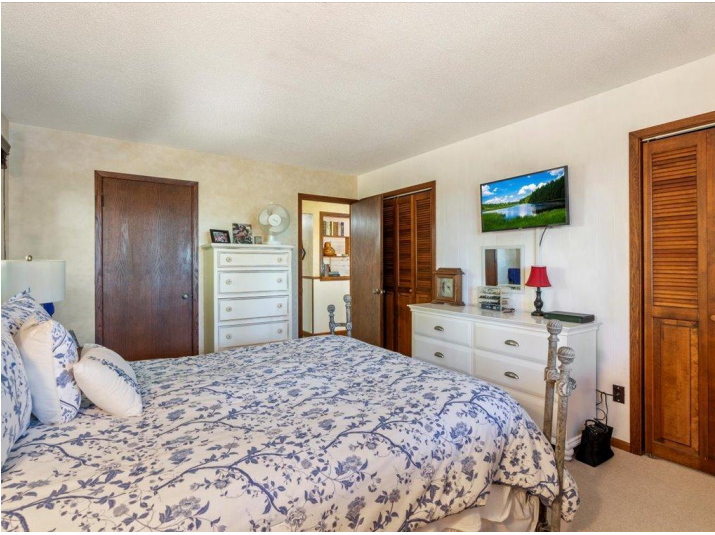
website: [www.AffinityRealEstate.com](http://www.AffinityRealEstate.com) | email: [info@affinityrealestate.com](mailto:info@affinityrealestate.com) | office: 218-237-3333 | fax: 218-237-3377

**Affinity**  
REAL ESTATE INC

**\$1,049,000**

MLS 6761620 Lake Home  
5916 Ojibwa Road  
Brainerd MN 56401





website: [www.AffinityRealEstate.com](http://www.AffinityRealEstate.com) | email: [info@affinityrealestate.com](mailto:info@affinityrealestate.com) | office: 218-237-3333 | fax: 218-237-3377

**Affinity**  
REAL ESTATE INC

**\$1,049,000**  
MLS 6761620 Lake Home  
5916 Ojibwa Road  
Brainerd MN 56401





website: [www.AffinityRealEstate.com](http://www.AffinityRealEstate.com) | email: [info@affinityrealestate.com](mailto:info@affinityrealestate.com) | office: 218-237-3333 | fax: 218-237-3377

**Affinity**  
REAL ESTATE INC

**\$1,049,000**

MLS 6761620 Lake Home  
5916 Ojibwa Road  
Brainerd MN 56401





website: [www.AffinityRealEstate.com](http://www.AffinityRealEstate.com) | email: [info@affinityrealestate.com](mailto:info@affinityrealestate.com) | office: 218-237-3333 | fax: 218-237-3377

**Affinity**  
REAL ESTATE INC

**\$1,049,000**  
MLS 6761620 Lake Home  
5916 Ojibwa Road  
Brainerd MN 56401





website: [www.AffinityRealEstate.com](http://www.AffinityRealEstate.com) | email: [info@affinityrealestate.com](mailto:info@affinityrealestate.com) | office: 218-237-3333 | fax: 218-237-3377



**\$1,049,000**  
MLS 6761620 Lake Home  
5916 Ojibwa Road  
Brainerd MN 56401