



MLS 6761905 Land

\$74,900

0.47 Acres
Plat Designed

15858 Old Stonebridge Trail
Brainerd MN 56401

Status: Active

Description:

Welcome to Stonebridge! Situated between the Mississippi River and Gilbert Lake is a great neighborhood to build your new home. Featuring a paved walking path around a private community lakelet, nicely wooded lots, paved street, city water sewer and a short drive to Brainerd or Baxter, this makes for an amazing opportunity! Come take a look today! LOT 2 BLOCK 2

Additional Details:

Lot Acres	0.47
Lot Dimensions	165x188x46x199
School District	181
Taxes	\$632
Taxes with Assessments	\$632
Tax Year	2025

Additional Features:

Driving Directions:

From Brainerd - East on Riverside Dr - Left on Ashmun Rd - Right on Old Stonebridge Trail



Listed By:
NextHome Horizons

Affinity Real Estate Inc. participates in the Regional Multiple Listing Service of Minnesota, Inc Broker Reciprocity (sm) program, allowing us to display other broker's listings on our website. All properties are subject to prior sale, change or withdrawal.



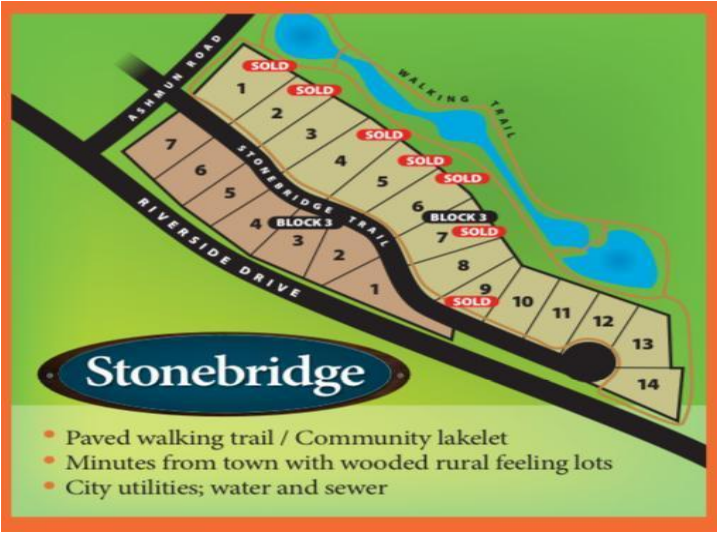
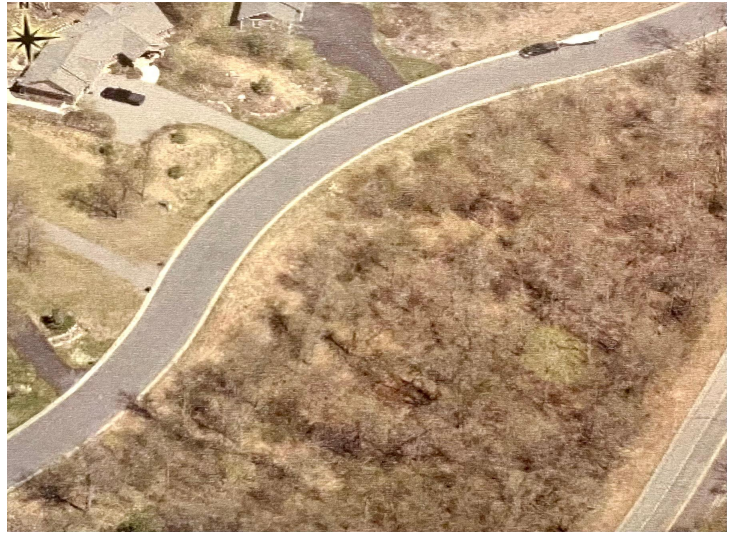
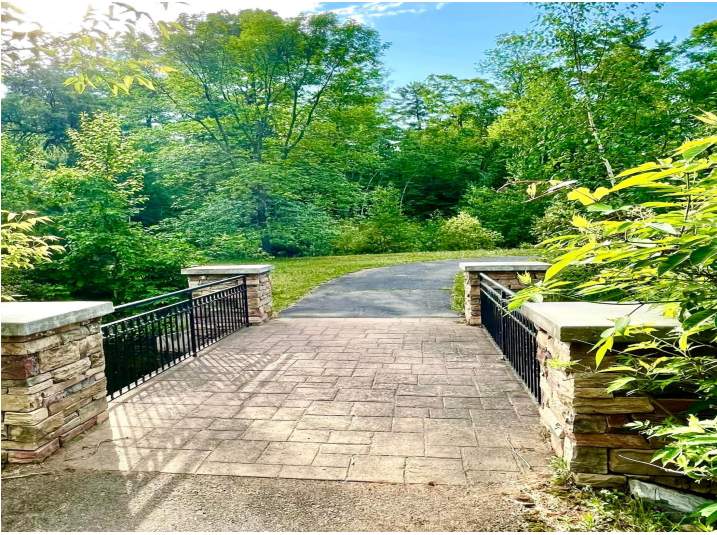
Call Affinity Real Estate

218-237-3333

info@affinityrealestate.com



Affinity Real Estate - 600 Park Avenue South - Park Rapids MN 56470



website: www.AffinityRealEstate.com | email: info@affinityrealestate.com | office: 218-237-3333 | fax: 218-237-3377



\$74,900
 MLS 6761905 Land
 15858 Old Stonebridge Trail
 Brainerd MN 56401



website: www.AffinityRealEstate.com | email: info@affinityrealestate.com | office: 218-237-3333 | fax:218-237-3377



\$74,900
MLS 6761905 Land
15858 Old Stonebridge Trail
Brainerd MN 56401

website: www.AffinityRealEstate.com | email: info@affinityrealestate.com | office: 218-237-3333 | fax:218-237-3377



\$74,900
MLS 6761905 Land
15858 Old Stonebridge Trail
Brainerd MN 56401

website: www.AffinityRealEstate.com | email: info@affinityrealestate.com | office: 218-237-3333 | fax:218-237-3377



\$74,900
MLS 6761905 Land
15858 Old Stonebridge Trail
Brainerd MN 56401