



MLS 6762253 Lake Home

**\$515,000**

3,228 sq ft  
4 bedrooms  
3 baths

14631 Cable Lake Road  
Mentor MN 56736

Waterfront: Cable Lake (60029300)

Status: Active

**Description:**

Lakeside Living! Enjoy the privacy and serenity of this well built home on Cable Lake. The property is wooded, has 160 feet of shoreline, and is a perfect place to enjoy Minnesota's seasons. The home is 3588 square feet and has 3-4 bedrooms and 3 baths. The open floor plan on the main level is set up for one level living. The lower level is great for kids or for visiting lake company. It has a new water heater and water softener. It is move-in ready. The location at the end of a Dead End road makes this home a private oasis that combines functionality with exclusivity.

**Additional Details:**

Year Built	1994
Lot Acres	1.99
Lot Dimensions	160 x 300
Garage Stalls	3
School District	599
Taxes	\$3,578
Taxes with Assessments	\$3,838
Tax Year	2024

**Additional Features:**

**Basement:** Finished, Full **Fuel:** Electric, Wood **Garage:** 3 **Heat:** Forced Air **Sewer:** Tank with Drainage Field **Water:** Well **Air Conditioning:** Central Air

**Driving Directions:**

Go South of Mentor, MN on Cnty Hwy 12 towards Fertile, MN. Take a right on Cable Lake Road SE. Look for the signs.



Listed By:  
Minnesota First Realty

Affinity Real Estate Inc. participates in the Regional Multiple Listing Service of Minnesota, Inc Broker Reciprocity (sm) program, allowing us to display other broker's listings on our website. All properties are subject to prior sale, change or withdrawal.



**Call Affinity Real Estate**

**218-237-3333**

**info@affinityrealestate.com**



**Affinity Real Estate - 600 Park Avenue South - Park Rapids MN 56470**





website: [www.AffinityRealEstate.com](http://www.AffinityRealEstate.com) | email: [info@affinityrealestate.com](mailto:info@affinityrealestate.com) | office: 218-237-3333 | fax: 218-237-3377



**\$515,000**  
 MLS 6762253 Lake Home  
 14631 Cable Lake Road  
 Mentor MN 56736





website: [www.AffinityRealEstate.com](http://www.AffinityRealEstate.com) | email: [info@affinityrealestate.com](mailto:info@affinityrealestate.com) | office: 218-237-3333 | fax: 218-237-3377



**\$515,000**

MLS 6762253 Lake Home  
14631 Cable Lake Road  
Mentor MN 56736



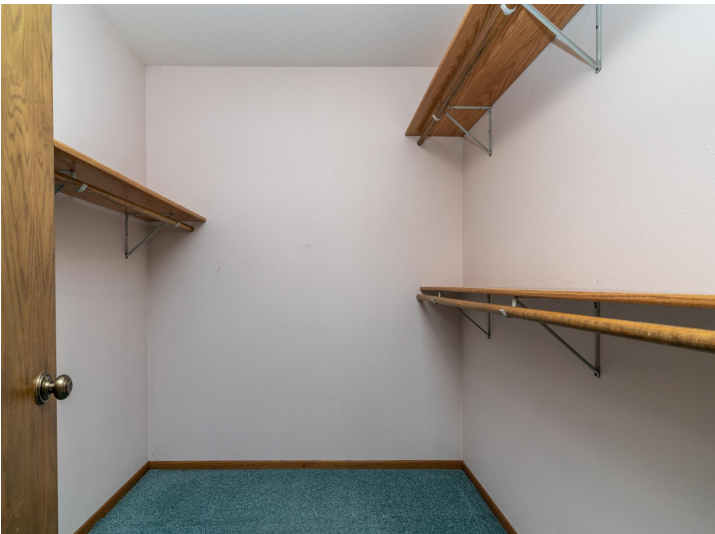


website: [www.AffinityRealEstate.com](http://www.AffinityRealEstate.com) | email: [info@affinityrealestate.com](mailto:info@affinityrealestate.com) | office: 218-237-3333 | fax: 218-237-3377



**\$515,000**  
 MLS 6762253 Lake Home  
 14631 Cable Lake Road  
 Mentor MN 56736





website: [www.AffinityRealEstate.com](http://www.AffinityRealEstate.com) | email: [info@affinityrealestate.com](mailto:info@affinityrealestate.com) | office: 218-237-3333 | fax: 218-237-3377

**Affinity**  
REAL ESTATE INC

**\$515,000**  
MLS 6762253 Lake Home  
14631 Cable Lake Road  
Mentor MN 56736





website: [www.AffinityRealEstate.com](http://www.AffinityRealEstate.com) | email: [info@affinityrealestate.com](mailto:info@affinityrealestate.com) | office: 218-237-3333 | fax: 218-237-3377



**\$515,000**  
 MLS 6762253 Lake Home  
 14631 Cable Lake Road  
 Mentor MN 56736





website: [www.AffinityRealEstate.com](http://www.AffinityRealEstate.com) | email: [info@affinityrealestate.com](mailto:info@affinityrealestate.com) | office: 218-237-3333 | fax: 218-237-3377



**\$515,000**  
 MLS 6762253 Lake Home  
 14631 Cable Lake Road  
 Mentor MN 56736





website: [www.AffinityRealEstate.com](http://www.AffinityRealEstate.com) | email: [info@affinityrealestate.com](mailto:info@affinityrealestate.com) | office: 218-237-3333 | fax: 218-237-3377



**\$515,000**  
 MLS 6762253 Lake Home  
 14631 Cable Lake Road  
 Mentor MN 56736



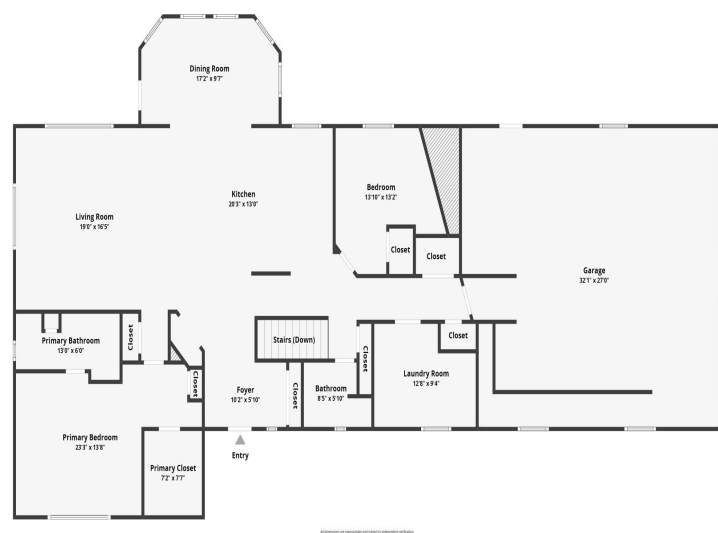


website: [www.AffinityRealEstate.com](http://www.AffinityRealEstate.com) | email: [info@affinityrealestate.com](mailto:info@affinityrealestate.com) | office: 218-237-3333 | fax: 218-237-3377

**Affinity**  
REAL ESTATE INC

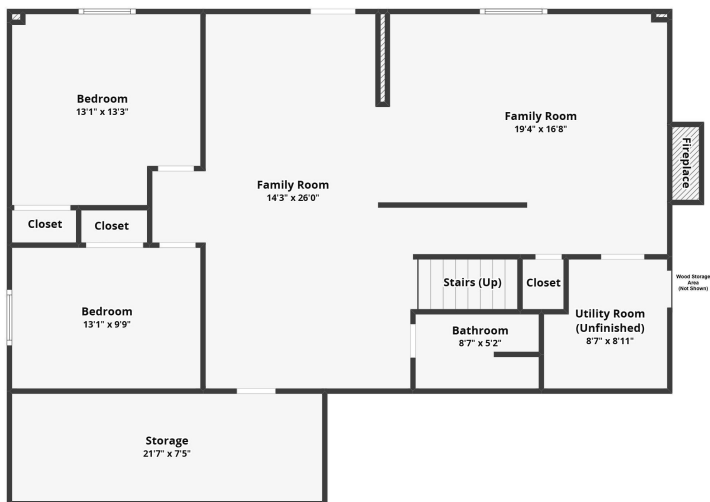
**\$515,000**  
MLS 6762253 Lake Home  
14631 Cable Lake Road  
Mentor MN 56736





Page 10 of 11





All dimensions are approximate and subject to independent verification

website: [www.AffinityRealEstate.com](http://www.AffinityRealEstate.com) | email: [info@affinityrealestate.com](mailto:info@affinityrealestate.com) | office: 218-237-3333 | fax: 218-237-3377



**\$515,000**

MLS 6762253 Lake Home  
14631 Cable Lake Road  
Mentor MN 56736