



MLS 6762429 Residential

\$450,000

3,450 sq ft
4 bedrooms
3 baths

21632 Edwards Drive
Ironton MN 56455

Status: Active

Description:

Welcome to this stunning 4-bedroom, 3-bathroom home offering over 3,400 sq ft of thoughtfully designed, single-level living nestled on 9 peaceful acres. Built with the high-performance Huber ZIP System, this home combines modern efficiency with comfort in every detail.

Step inside to a bright, open-concept layout featuring in-floor radiant heat, a backup furnace, and central air ensuring year-round comfort no matter the season. The kitchen is equipped with sleek black stainless steel appliances, plenty of prep space, and a layout ideal for entertaining.

Enjoy the privacy and space of your own acreage while being just minutes from all that Crosby-Ironton has to offer, including world amazing biking trails, lakes, shops, and dining.

Whether you're looking for room to roam or a modern retreat close to outdoor adventure, this property delivers the best of both worlds.

Additional Details:

Year Built	2023
Lot Acres	9
Lot Dimensions	irregular
School District	182
Taxes	\$174
Taxes with Assessments	\$174
Tax Year	2024

Additional Features:

Basement: None **Fuel:** Propane **Heat:** Forced Air, Radiant Floor **Sewer:** Septic System Compliant - Yes, Tank with Drainage Field **Water:** Drilled, Private **Air Conditioning:** Central Air

Driving Directions:

Turn onto Edwards drive and property is on the left hand side.



Listed By:
Northland Sotheby's International Realty

Affinity Real Estate Inc. participates in the Regional Multiple Listing Service of Minnesota, Inc Broker Reciprocity (sm) program, allowing us to display other broker's listings on our website. All properties are subject to prior sale, change or withdrawal.



Call Affinity Real Estate

218-237-3333

info@affinityrealestate.com



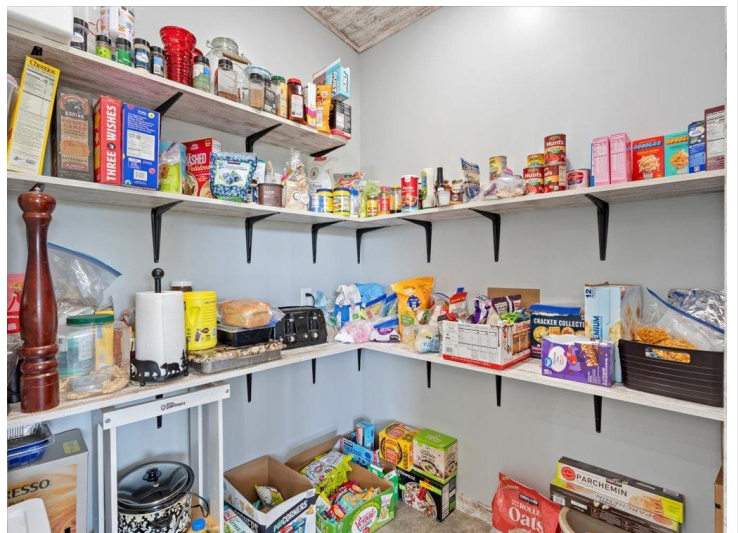
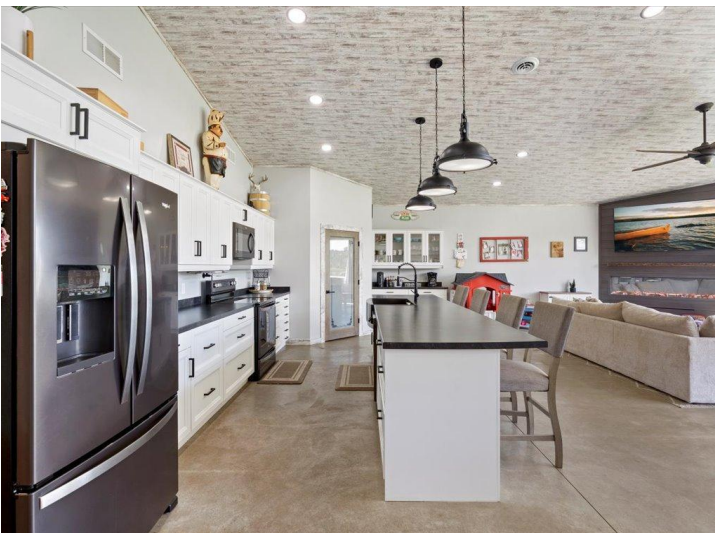
Affinity Real Estate - 600 Park Avenue South - Park Rapids MN 56470



website: www.AffinityRealEstate.com | email: info@affinityrealestate.com | office: 218-237-3333 | fax: 218-237-3377



\$450,000
 MLS 6762429 Residential
 21632 Edwards Drive
 Ironton MN 56455



website: www.AffinityRealEstate.com | email: info@affinityrealestate.com | office: 218-237-3333 | fax: 218-237-3377

Affinity
REAL ESTATE INC

\$450,000
MLS 6762429 Residential
21632 Edwards Drive
Ironton MN 56455



website: www.AffinityRealEstate.com | email: info@affinityrealestate.com | office: 218-237-3333 | fax: 218-237-3377



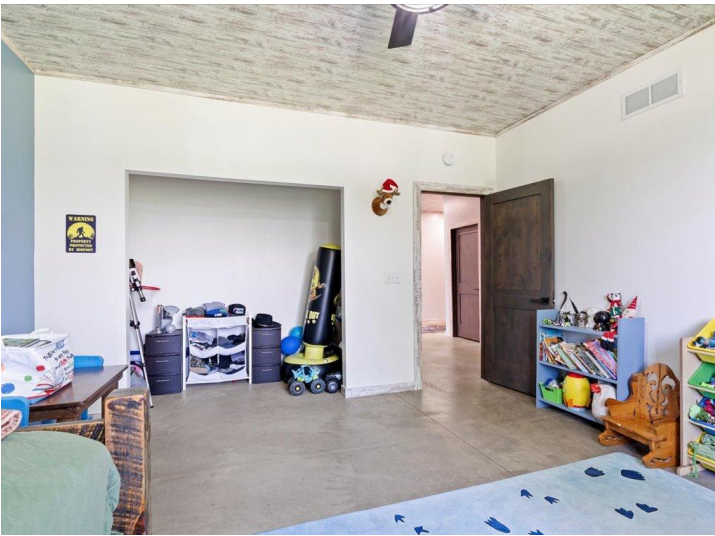
\$450,000
 MLS 6762429 Residential
 21632 Edwards Drive
 Ironton MN 56455



website: www.AffinityRealEstate.com | email: info@affinityrealestate.com | office: 218-237-3333 | fax: 218-237-3377

Affinity
REAL ESTATE INC

\$450,000
MLS 6762429 Residential
21632 Edwards Drive
Ironton MN 56455



website: www.AffinityRealEstate.com | email: info@affinityrealestate.com | office: 218-237-3333 | fax: 218-237-3377

Affinity
REAL ESTATE INC

\$450,000
MLS 6762429 Residential
21632 Edwards Drive
Ironton MN 56455



website: www.AffinityRealEstate.com | email: info@affinityrealestate.com | office: 218-237-3333 | fax: 218-237-3377



\$450,000
MLS 6762429 Residential
21632 Edwards Drive
Ironton MN 56455



website: www.AffinityRealEstate.com | email: info@affinityrealestate.com | office: 218-237-3333 | fax: 218-237-3377



\$450,000

MLS 6762429 Residential
21632 Edwards Drive
Ironton MN 56455



website: www.AffinityRealEstate.com | email: info@affinityrealestate.com | office: 218-237-3333 | fax:218-237-3377



\$450,000
MLS 6762429 Residential
21632 Edwards Drive
Ironton MN 56455