



MLS 6762490 Lake Home

\$349,000

1,513 sq ft
3 bedrooms
2 baths

13847 Pearl Lake Lane
Detroit Lakes MN 56501

Waterfront: Pearl

Status: Active

Description:

This Pearl on Pearl Lake is a rare gem.....and it's shining just for you! Enjoy this year round farmhouse home featuring a 3 bedrooms plus an office, and 2+ bathrooms on 100ft of lakeshore. This cute home features a main level bedroom, and full bathroom, hardwood floors, stainless steel appliances and a deck that feels like your front-row seat to paradise! Upstairs, you'll find two additional bedrooms and a half bath. The lower level boasts a walkout basement with a finished family room, shower/sink/washing machine.....add a clothes dryer, hook up the sink, and make it your own! Features to enhance your lake life living include- Propane forced air furnace, central air conditioning, vinyl siding, multiple updated vinyl windows, generous parking area for multiple vehicles, and 2 handy storage sheds. This rare gem won't sparkle on the market forever.....make it yours now!

Additional Details:

Year Built	1930
Lot Acres	0.5
Lot Dimensions	100x154x100x72
School District	22
Taxes	\$1,680
Taxes with Assessments	\$1,802
Tax Year	2025

Additional Features:

Fuel: Propane **Heat:** Forced Air

Driving Directions:

From DL, Head north on Washington Ave toward Holmes St W, Turn NW onto US-10 W. Turn S onto Co Hwy 15/210 Ave. Turn E onto N Pearl Lake Rd. Turn SW onto Pearl Lake Ln. Destination will be on the left.



Listed By:
Keller Williams Realty Profess

Affinity Real Estate Inc. participates in the Regional Multiple Listing Service of Minnesota, Inc Broker Reciprocity (sm) program, allowing us to display other broker's listings on our website. All properties are subject to prior sale, change or withdrawal.



Call Affinity Real Estate

218-237-3333

info@affinityrealestate.com



Affinity Real Estate - 600 Park Avenue South - Park Rapids MN 56470



website: www.AffinityRealEstate.com | email: info@affinityrealestate.com | office: 218-237-3333 | fax: 218-237-3377

Affinity
REAL ESTATE INC

\$349,000
MLS 6762490 Lake Home
13847 Pearl Lake Lane
Detroit Lakes MN 56501



website: www.AffinityRealEstate.com | email: info@affinityrealestate.com | office: 218-237-3333 | fax: 218-237-3377



\$349,000
 MLS 6762490 Lake Home
 13847 Pearl Lake Lane
 Detroit Lakes MN 56501



website: www.AffinityRealEstate.com | email: info@affinityrealestate.com | office: 218-237-3333 | fax: 218-237-3377

Affinity
REAL ESTATE INC

\$349,000
MLS 6762490 Lake Home
13847 Pearl Lake Lane
Detroit Lakes MN 56501



website: www.AffinityRealEstate.com | email: info@affinityrealestate.com | office: 218-237-3333 | fax: 218-237-3377

Affinity
REAL ESTATE INC

\$349,000
MLS 6762490 Lake Home
13847 Pearl Lake Lane
Detroit Lakes MN 56501



website: www.AffinityRealEstate.com | email: info@affinityrealestate.com | office: 218-237-3333 | fax: 218-237-3377



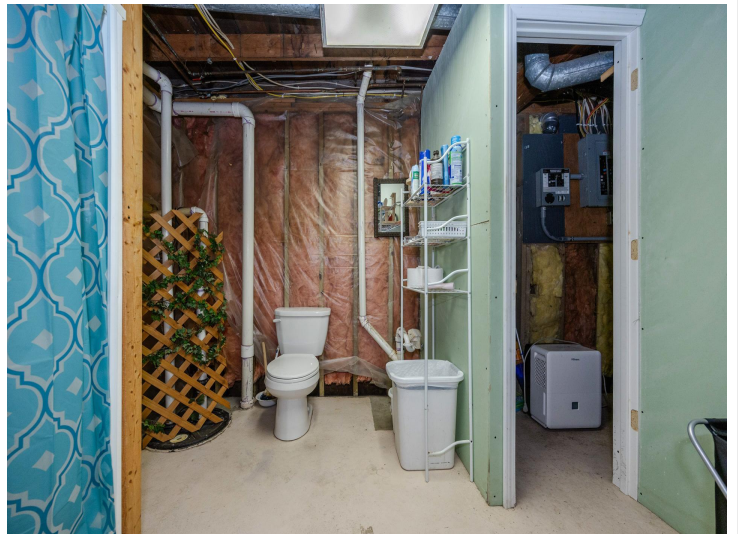
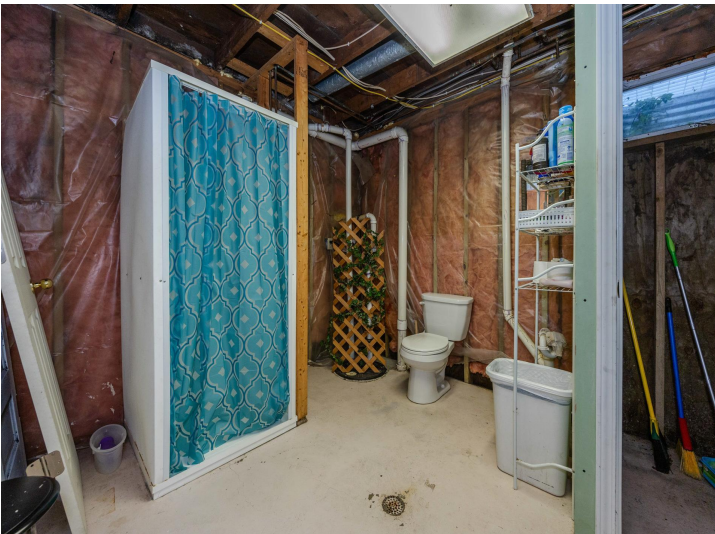
\$349,000
 MLS 6762490 Lake Home
 13847 Pearl Lake Lane
 Detroit Lakes MN 56501



website: www.AffinityRealEstate.com | email: info@affinityrealestate.com | office: 218-237-3333 | fax: 218-237-3377



\$349,000
MLS 6762490 Lake Home
13847 Pearl Lake Lane
Detroit Lakes MN 56501



website: www.AffinityRealEstate.com | email: info@affinityrealestate.com | office: 218-237-3333 | fax: 218-237-3377

Affinity
REAL ESTATE INC

\$349,000
MLS 6762490 Lake Home
13847 Pearl Lake Lane
Detroit Lakes MN 56501



website: www.AffinityRealEstate.com | email: info@affinityrealestate.com | office: 218-237-3333 | fax: 218-237-3377

Affinity
REAL ESTATE INC

\$349,000
MLS 6762490 Lake Home
13847 Pearl Lake Lane
Detroit Lakes MN 56501



website: www.AffinityRealEstate.com | email: info@affinityrealestate.com | office: 218-237-3333 | fax: 218-237-3377

Affinity
REAL ESTATE INC

\$349,000
MLS 6762490 Lake Home
13847 Pearl Lake Lane
Detroit Lakes MN 56501



website: www.AffinityRealEstate.com | email: info@affinityrealestate.com | office: 218-237-3333 | fax: 218-237-3377



\$349,000
 MLS 6762490 Lake Home
 13847 Pearl Lake Lane
 Detroit Lakes MN 56501



website: www.AffinityRealEstate.com | email: info@affinityrealestate.com | office: 218-237-3333 | fax: 218-237-3377



\$349,000
MLS 6762490 Lake Home
13847 Pearl Lake Lane
Detroit Lakes MN 56501