



MLS 6762572 Lake Land

\$150,000

Description:

Escape to your own private sanctuary with this rare 3.25-acre tree-lined lot, nestled on the shores of a serene, spring-fed natural environmental lake, offering an unspoiled environment perfect for swimming, kayaking, fishing, or simply soaking in the peaceful beauty of nature. The lot is cleared and ready for immediate enjoyment or the perfect location to build your dream home or cabin retreat. It already includes a well-maintained 29.5-foot camper with an 8x20 attached screened porch, and an 8x12 storage shed for your lake toys and tools. Utilities are in place with electric service and a private well, with two RV hookup sites—making it an excellent setup for weekend getaways or future development. Whether you're looking to build or just relax in a natural, private setting, this property offers exceptional versatility, comfort, and value. Don't miss your chance to own a little slice of lakefront paradise!

Additional Details:

Lot Acres	3.25
Lot Dimensions	539x215x380x563
School District	182
Taxes	\$192
Taxes with Assessments	\$192
Tax Year	2024

Additional Features:

Driving Directions:

From Deerwood, go right on MN 6 for 2 miles to left on CR 133 .4 miles and stay left on CR 133 1.7 miles to left on CR 10 to property on right.



Listed By:
Century 21 Brainerd Realty

Affinity Real Estate Inc. participates in the Regional Multiple Listing Service of Minnesota, Inc Broker Reciprocity (sm) program, allowing us to display other broker's listings on our website. All properties are subject to prior sale, change or withdrawal.



Call Affinity Real Estate

218-237-3333

info@affinityrealestate.com



Affinity Real Estate - 600 Park Avenue South - Park Rapids MN 56470



These data are provided on an "AS-IS" basis, without warranty of any type, expressed or implied, including but not limited to any warranty as to their performance, merchantability, or fitness for any particular purpose.

Date: 7/26/2025 Time: 1:46 PM



website: www.AffinityRealEstate.com | email: info@affinityrealestate.com | office: 218-237-3333 | fax: 218-237-3377

Affinity
REAL ESTATE INC

\$150,000
MLS 6762572 Lake Land
19744 County Road 10
Deerwood MN 56444



website: www.AffinityRealEstate.com | email: info@affinityrealestate.com | office: 218-237-3333 | fax: 218-237-3377



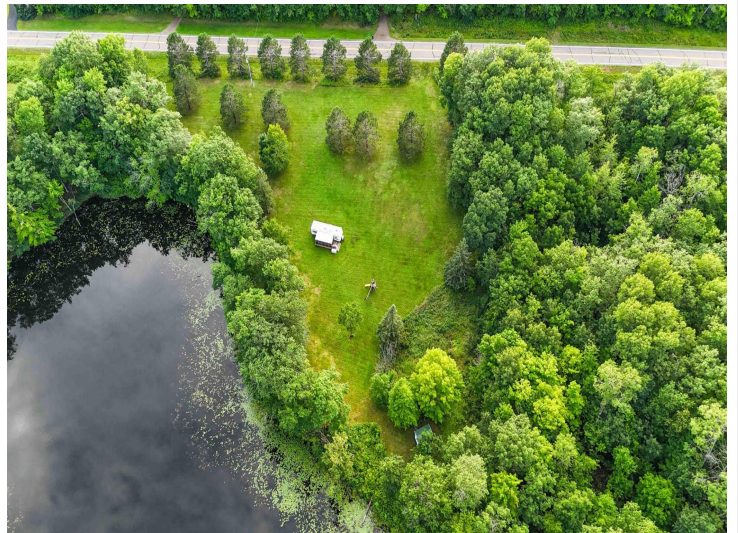
\$150,000
 MLS 6762572 Lake Land
 19744 County Road 10
 Deerwood MN 56444



website: www.AffinityRealEstate.com | email: info@affinityrealestate.com | office: 218-237-3333 | fax: 218-237-3377

Affinity
REAL ESTATE INC

\$150,000
MLS 6762572 Lake Land
19744 County Road 10
Deerwood MN 56444



website: www.AffinityRealEstate.com | email: info@affinityrealestate.com | office: 218-237-3333 | fax: 218-237-3377



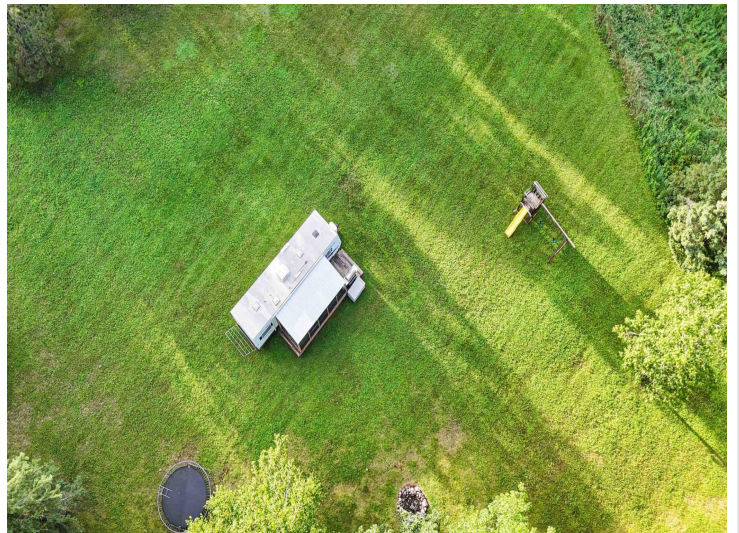
\$150,000
MLS 6762572 Lake Land
19744 County Road 10
Deerwood MN 56444



website: www.AffinityRealEstate.com | email: info@affinityrealestate.com | office: 218-237-3333 | fax: 218-237-3377



\$150,000
 MLS 6762572 Lake Land
 19744 County Road 10
 Deerwood MN 56444



website: www.AffinityRealEstate.com | email: info@affinityrealestate.com | office: 218-237-3333 | fax: 218-237-3377



\$150,000
 MLS 6762572 Lake Land
 19744 County Road 10
 Deerwood MN 56444



website: www.AffinityRealEstate.com | email: info@affinityrealestate.com | office: 218-237-3333 | fax: 218-237-3377



\$150,000

MLS 6762572 Lake Land
19744 County Road 10
Deerwood MN 56444