



MLS 6762646 Lake Land

\$149,900



Description:

Mississippi Woods – 4.7 acres of dense pine and mixed timber with Mississippi River frontage, offering privacy, natural beauty, and a scenic creek running through the property. This prime parcel is perfect for building your dream home or creating a private vacation getaway. Enjoy direct access to snowmobile trails and a short ride to the Cuyuna bike trails. Don't miss this rare opportunity to own your own slice of the outdoors.

Additional Details:

Lot Acres	4.7
Lot Dimensions	261x609x100x280x700
School District	182
Taxes	\$376
Taxes with Assessments	\$376
Tax Year	2025

Additional Features:

Driving Directions:

From Crosby go North on Hwy 6 to Left on County Road 30. Property is located on the corner of County Road 30 and River Road.



Listed By:
Coldwell Banker Crown Realtors

Affinity Real Estate Inc. participates in the Regional Multiple Listing Service of Minnesota, Inc Broker Reciprocity (sm) program, allowing us to display other broker's listings on our website. All properties are subject to prior sale, change or withdrawal.



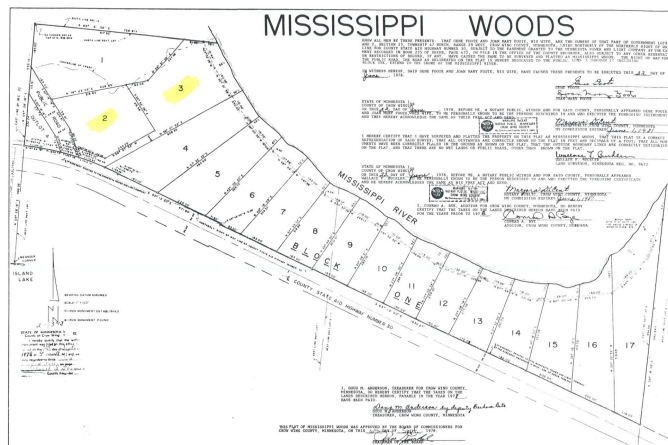
Call Affinity Real Estate

218-237-3333

info@affinityrealestate.com



Affinity Real Estate - 600 Park Avenue South - Park Rapids MN 56470



website: www.AffinityRealEstate.com | email: info@affinityrealestate.com | office: 218-237-3333 | fax: 218-237-3377



\$149,900
MLS 6762646 Lake Land
TBD Lots 2 & 3 County Road
30
Crosby MN 56441