



MLS 6762723 Commercial

\$119,900

118 Jefferson Street
Wadena MN 56482

Status: Active

Description:

Step into a piece of local history with this incredible opportunity to own and operate Lyle's Shoe Store, a long-standing retail staple in downtown Wadena since 1955 (70 years in business!). This turn-key business sale includes the building, all inventory, established brand name, recognizable logo, point-of-sale/operating system, security camera setup, office equipment, shelving, and more—everything you need to keep the legacy thriving.

Strategically located in the heart of Wadena's downtown district, Lyle's Shoe Store offers great street visibility and consistent foot traffic from loyal customers and new visitors alike. With decades of trusted service, this business enjoys a strong reputation and deep community roots.

Whether you're an aspiring entrepreneur or a seasoned business owner looking to expand, this is a rare chance to step into a fully equipped retail operation with immediate income potential.

Don't miss your chance to own a local icon. Schedule your showing today!

Additional Details:

| | |
|------------------------|---------|
| Year Built | 1880 |
| Lot Acres | 0.08 |
| Lot Dimensions | 25x140 |
| School District | 2155 |
| Taxes | \$1,078 |
| Taxes with Assessments | \$1,078 |
| Tax Year | 2025 |

Additional Features:

Basement: Partial, Concrete, Unfinished **Fuel:** Natural Gas **Heat:** Forced Air **Sewer:** City Sewer/Connected **Water:** City Water/Connected **Air Conditioning:** Central Air

Driving Directions:

From the intersection of US Hwy 10 and US Hwy 71 in Wadena, take US Hwy 71 S for approx 1.5 blocks; property is on east side.



Listed By:
Albers Realty

Affinity Real Estate Inc. participates in the Regional Multiple Listing Service of Minnesota, Inc Broker Reciprocity (sm) program, allowing us to display other broker's listings on our website. All properties are subject to prior sale, change or withdrawal.



Call Affinity Real Estate

218-237-3333

info@affinityrealestate.com



Affinity Real Estate - 600 Park Avenue South - Park Rapids MN 56470



website: www.AffinityRealEstate.com | email: info@affinityrealestate.com | office: 218-237-3333 | fax: 218-237-3377

Affinity
REAL ESTATE INC

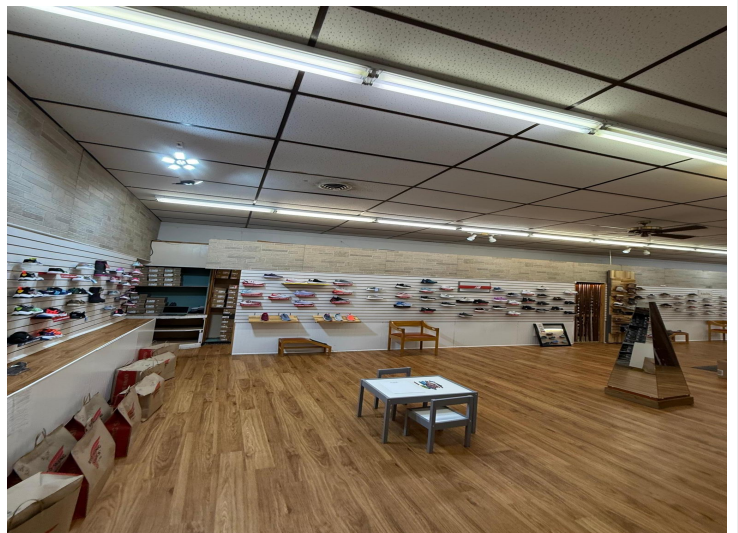
\$119,900
MLS 6762723 Commercial
118 Jefferson Street
Wadena MN 56482



website: www.AffinityRealEstate.com | email: info@affinityrealestate.com | office: 218-237-3333 | fax: 218-237-3377



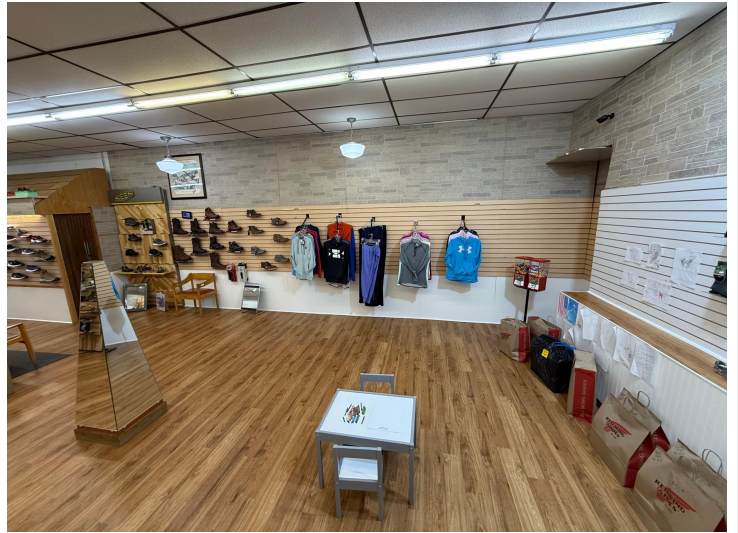
\$119,900
 MLS 6762723 Commercial
 118 Jefferson Street
 Wadena MN 56482



website: www.AffinityRealEstate.com | email: info@affinityrealestate.com | office: 218-237-3333 | fax: 218-237-3377



\$119,900
 MLS 6762723 Commercial
 118 Jefferson Street
 Wadena MN 56482



website: www.AffinityRealEstate.com | email: info@affinityrealestate.com | office: 218-237-3333 | fax: 218-237-3377



\$119,900
 MLS 6762723 Commercial
 118 Jefferson Street
 Wadena MN 56482



website: www.AffinityRealEstate.com | email: info@affinityrealestate.com | office: 218-237-3333 | fax: 218-237-3377



\$119,900
 MLS 6762723 Commercial
 118 Jefferson Street
 Wadena MN 56482



website: www.AffinityRealEstate.com | email: info@affinityrealestate.com | office: 218-237-3333 | fax: 218-237-3377



\$119,900
 MLS 6762723 Commercial
 118 Jefferson Street
 Wadena MN 56482



website: www.AffinityRealEstate.com | email: info@affinityrealestate.com | office: 218-237-3333 | fax: 218-237-3377

Affinity
REAL ESTATE INC

\$119,900
MLS 6762723 Commercial
118 Jefferson Street
Wadena MN 56482



website: www.AffinityRealEstate.com | email: info@affinityrealestate.com | office: 218-237-3333 | fax: 218-237-3377



\$119,900
MLS 6762723 Commercial
118 Jefferson Street
Wadena MN 56482