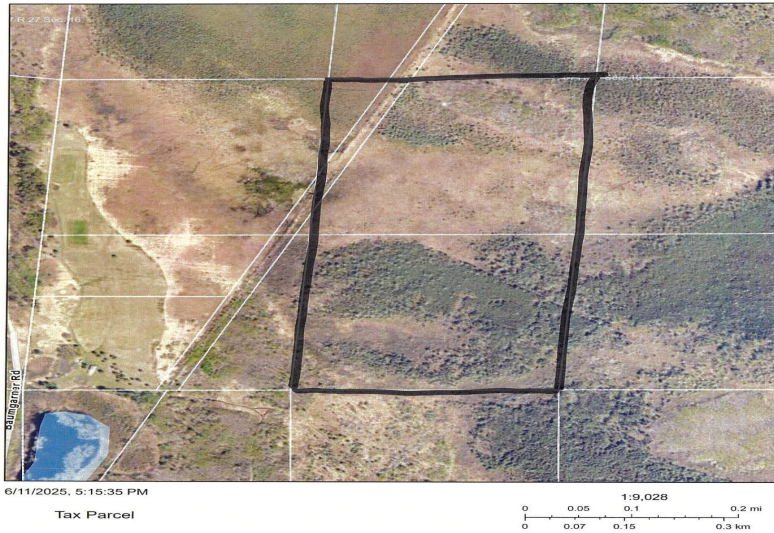


Itasca County GIS Web Map



This information is a compilation of data from different sources with varying degrees of accuracy and requires a qualified field survey to verify.



MLS 6762728 Land

\$31,500

78.25 Acres
Raw Land

TBD Baumgartner Rd
Deer River MN 56636

Status: Pending

Description:

80 acres of mixed hunting land. Some nicer high land to the South, primarily low land to the North

Additional Details:

Lot Acres	78.25
Lot Dimensions	1318 x 2635 approx
School District	317
Taxes	\$152
Taxes with Assessments	\$332
Tax Year	2024

Additional Features:

Driving Directions:

CR 19 to Baumgartner



Listed By:
MN DIRECT PROPERTIES

Affinity Real Estate Inc. participates in the Regional Multiple Listing Service of Minnesota, Inc Broker Reciprocity (sm) program, allowing us to display other broker's listings on our website. All properties are subject to prior sale, change or withdrawal.



Call Affinity Real Estate

218-237-3333

info@affinityrealestate.com

MLS



Affinity Real Estate - 600 Park Avenue South - Park Rapids MN 56470

Itasca County GIS Web Map



6/11/2025, 5:15:35 PM

Tax Parcel

1:9,028
0 0.05 0.1 0.2 mi
0 0.07 0.15 0.3 km

This information is a compilation of data from different sources with varying degrees of accuracy and requires a qualified field survey to verify.

website: www.AffinityRealEstate.com | email: info@affinityrealestate.com | office: 218-237-3333 | fax: 218-237-3377



\$31,500
MLS 6762728 Land
TBD Baumgartner Rd
Deer River MN 56636