



MLS 6762938 Residential

\$310,900

1,135 sq ft
2 bedrooms
2 baths

13400 State Highway 18
Brainerd MN 56401

Status: Active

Description:

Enjoy peaceful country living just minutes from town in this beautifully updated 2-bedroom, 2-bath home situated on 2.5 private acres. New windows and siding (2023), enhancing both curb appeal and energy efficiency. Step inside to find fresh paint and new flooring that give the home a bright, contemporary feel. The fully remodeled kitchen boasts stainless steel appliances and a magazine-worthy design, blending modern function with farmhouse charm. Both bathrooms have been stylishly updated with high-end finishes. The oversized, insulated two-car attached garage offers ample space for vehicles, storage, or workshop needs. Outside, a private backyard provides the perfect setting to relax and enjoy your own slice of nature.

Additional Details:

Year Built	1950
Lot Acres	2.5
Lot Dimensions	230 x 475
Garage Stalls	2
School District	181
Taxes	\$1,188
Taxes with Assessments	\$1,188
Tax Year	2024

Additional Features:

Basement: Block, Full, Unfinished **Fuel:** Propane **Garage:** 2 **Heat:** Forced Air **Sewer:** Private Sewer, Septic System Compliant - Yes
Water: Submersible - 4 Inch, Drilled, Private **Air Conditioning:** Central Air

Driving Directions:

From Brainerd, State Hwy 18 and State Hwy 25 intersection, east on State Hwy 18 for 2 miles to property on left. Fire#13400.



Listed By:
Woods to Water Real Estate

Affinity Real Estate Inc. participates in the Regional Multiple Listing Service of Minnesota, Inc Broker Reciprocity (sm) program, allowing us to display other broker's listings on our website. All properties are subject to prior sale, change or withdrawal.



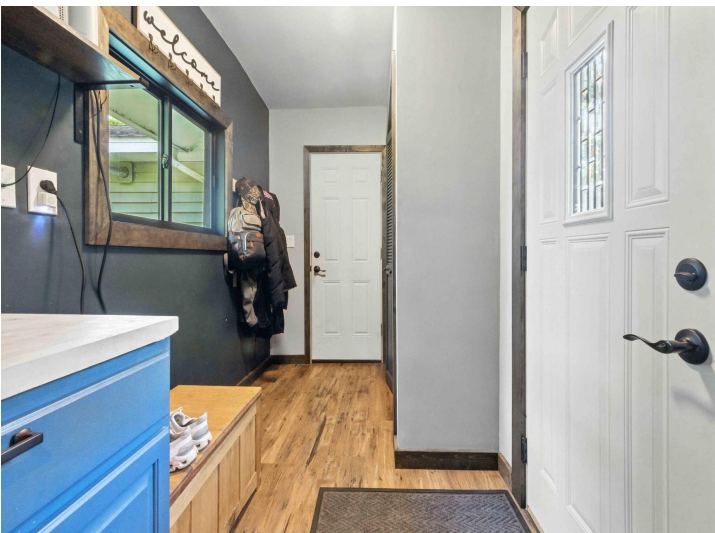
Call Affinity Real Estate

218-237-3333

info@affinityrealestate.com



Affinity Real Estate - 600 Park Avenue South - Park Rapids MN 56470



website: www.AffinityRealEstate.com | email: info@affinityrealestate.com | office: 218-237-3333 | fax: 218-237-3377



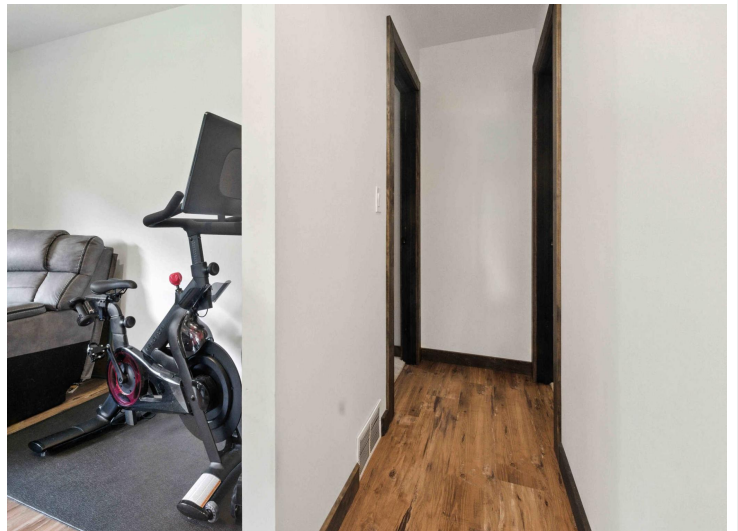
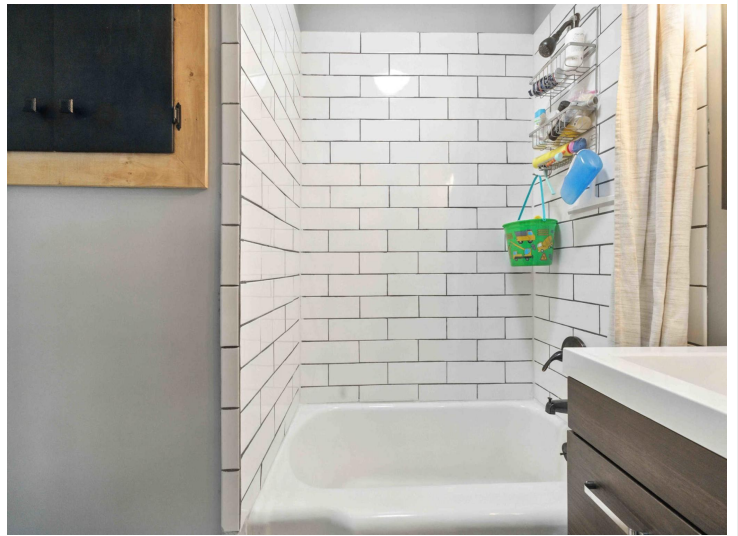
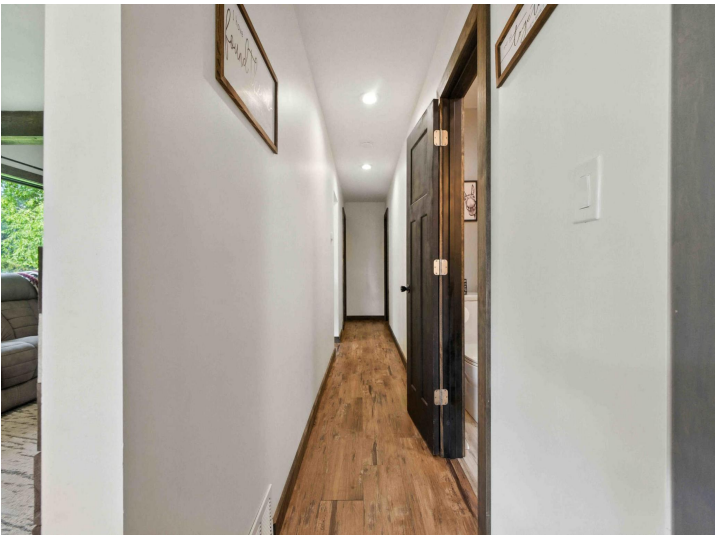
\$310,900
 MLS 6762938 Residential
 13400 State Highway 18
 Brainerd MN 56401



website: www.AffinityRealEstate.com | email: info@affinityrealestate.com | office: 218-237-3333 | fax: 218-237-3377



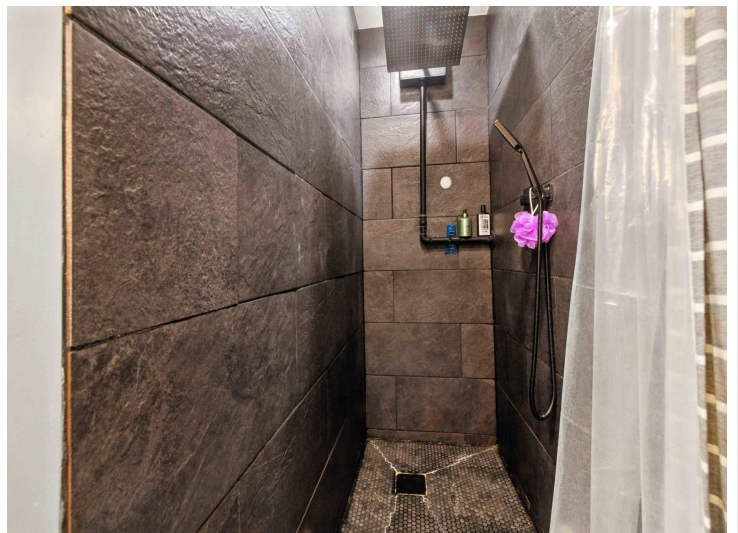
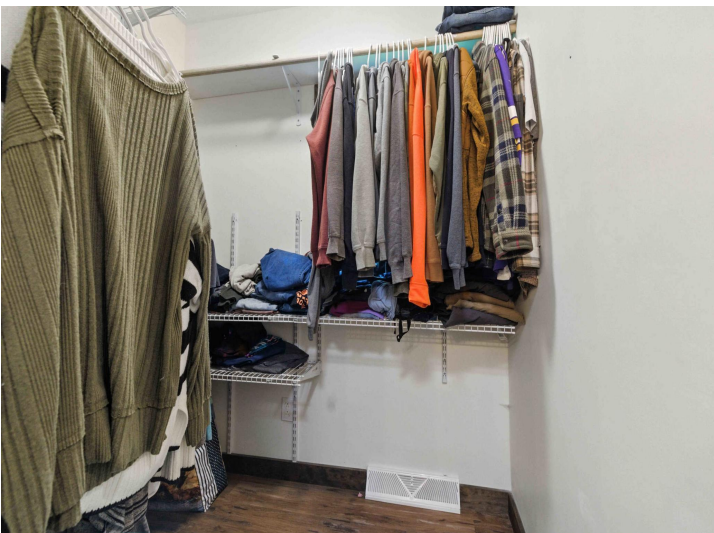
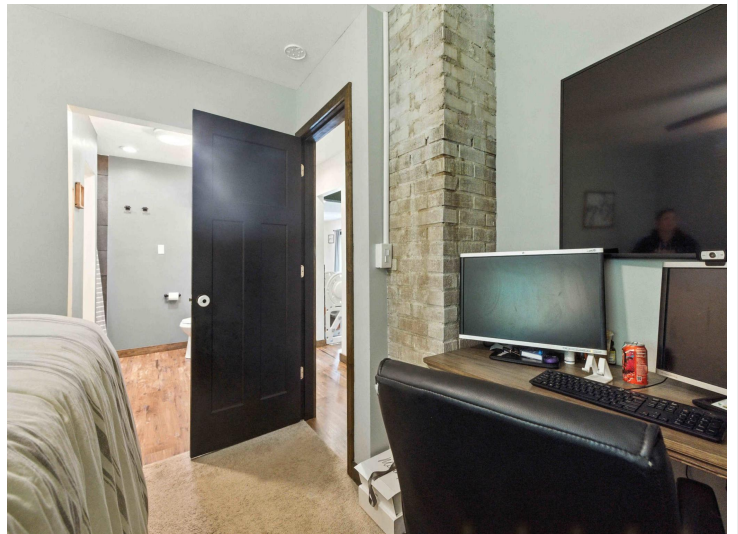
\$310,900
 MLS 6762938 Residential
 13400 State Highway 18
 Brainerd MN 56401



website: www.AffinityRealEstate.com | email: info@affinityrealestate.com | office: 218-237-3333 | fax: 218-237-3377



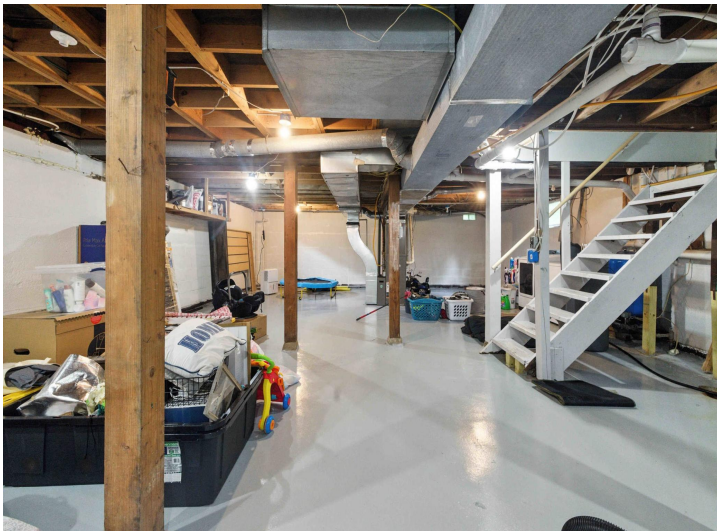
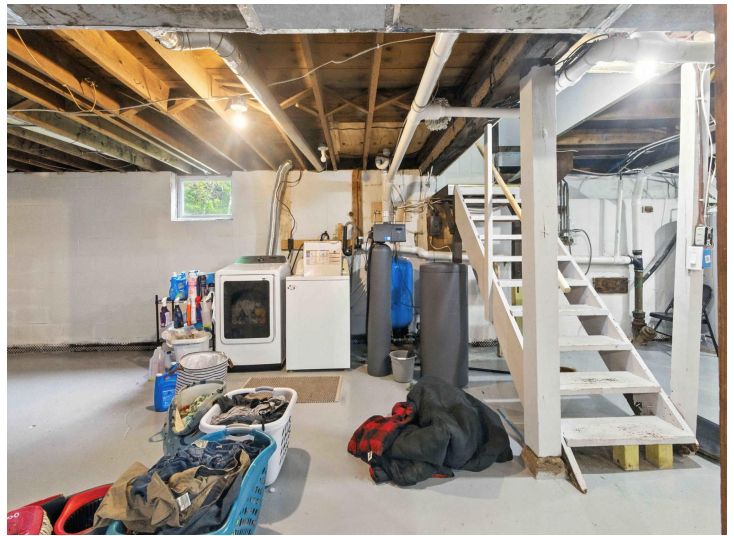
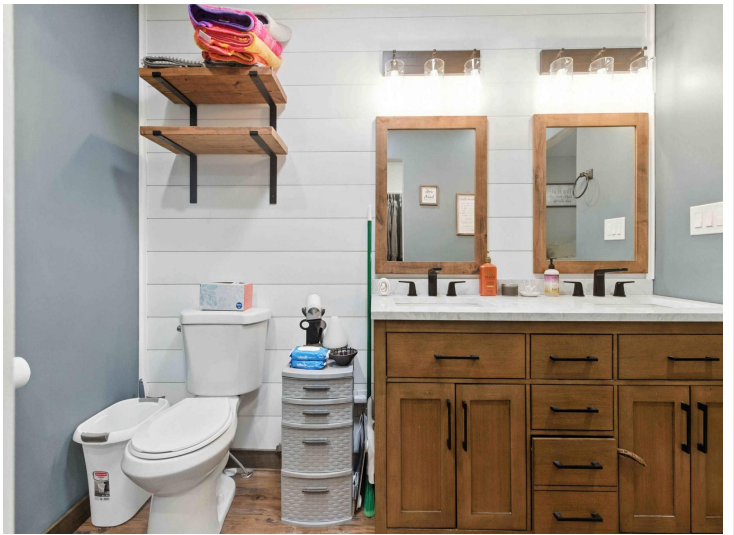
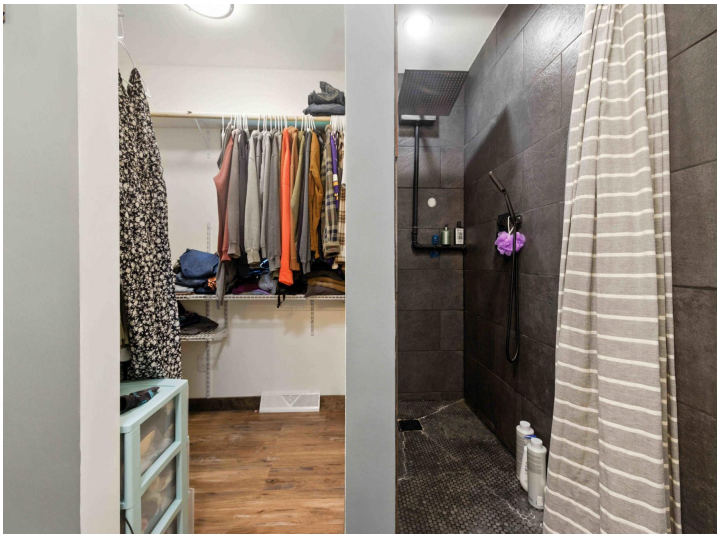
\$310,900
MLS 6762938 Residential
13400 State Highway 18
Brainerd MN 56401



website: www.AffinityRealEstate.com | email: info@affinityrealestate.com | office: 218-237-3333 | fax: 218-237-3377



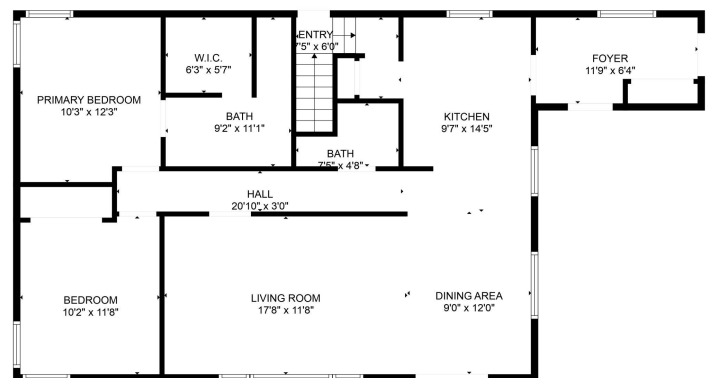
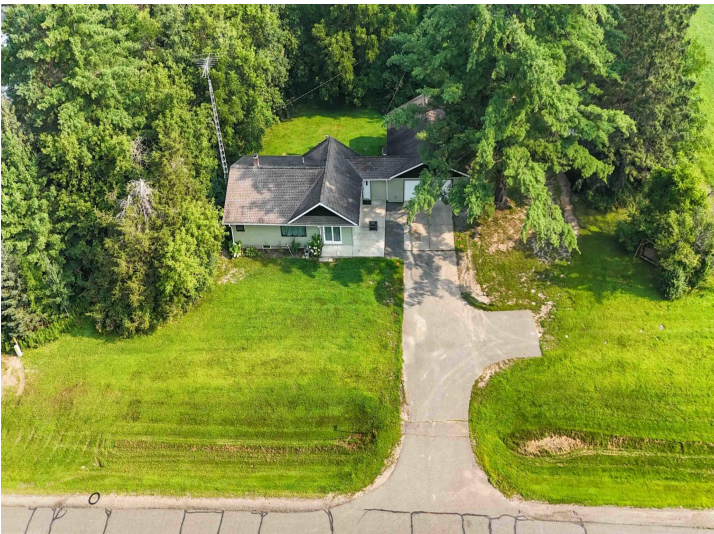
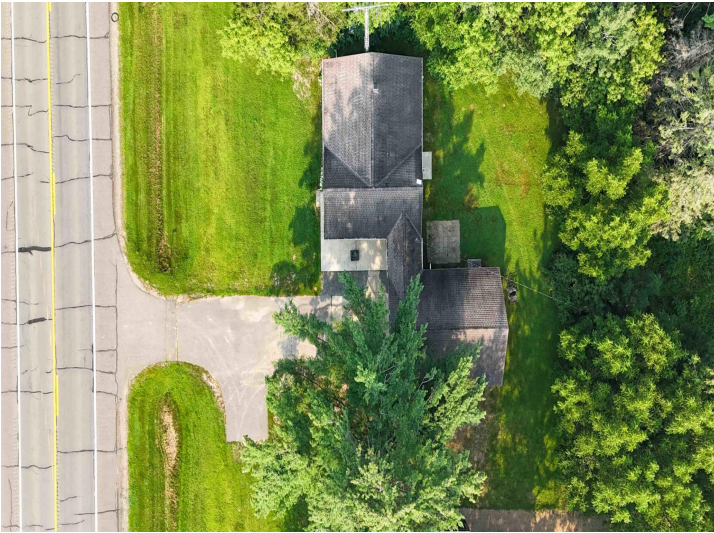
\$310,900
 MLS 6762938 Residential
 13400 State Highway 18
 Brainerd MN 56401



website: www.AffinityRealEstate.com | email: info@affinityrealestate.com | office: 218-237-3333 | fax: 218-237-3377

Affinity
REAL ESTATE INC

\$310,900
MLS 6762938 Residential
13400 State Highway 18
Brainerd MN 56401

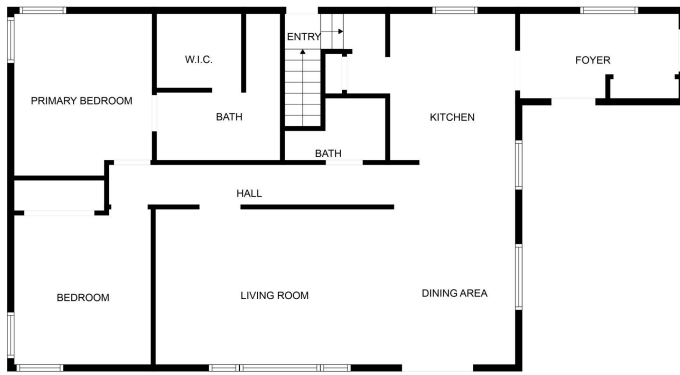


Total GLA: 1135 sq. ft. | Total: 2094 sq. ft.
 Floor 1 - Below grade. (Excluded areas 959 sq. ft.)
 Floor 2: 1135 sq. ft.
 FLOOR PLAN CREATED BY CIRCLEKIDS AND PHOTOGRAPHS GENERATED BY AI. NOT FOR CONSTRUCTION.

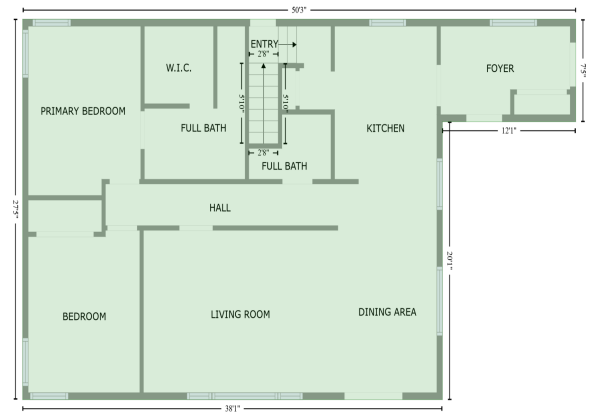
website: www.AffinityRealEstate.com | email: info@affinityrealestate.com | office: 218-237-3333 | fax: 218-237-3377



\$310,900
 MLS 6762938 Residential
 13400 State Highway 18
 Brainerd MN 56401



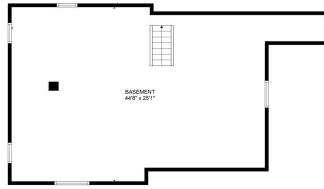
FLOOR 2
[AREA: 1135]



FLOOR PLAN CREATED BY CUBICASA APP. MEASUREMENTS DEEMED HIGHLY RELIABLE BUT NOT GUARANTEED.



FLOOR 2



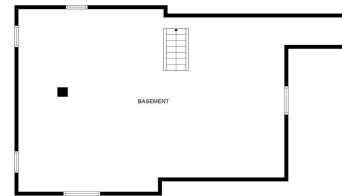
FLOOR 1

Total GLA: 1135 sq. ft. | Total: 2094 sq. ft.
Floor 1 - Below grade (Excluded areas 959 sq. ft.)
Floor 2: 1135 sq. ft.

FLOOR PLAN CREATED BY CUBICASA APP. MEASUREMENTS DEEMED HIGHLY RELIABLE BUT NOT GUARANTEED.



FLOOR 2



FLOOR 1

FLOOR PLAN CREATED BY CUBICASA APP. MEASUREMENTS DEEMED HIGHLY RELIABLE BUT NOT GUARANTEED.

website: www.AffinityRealEstate.com | email: info@affinityrealestate.com | office: 218-237-3333 | fax: 218-237-3377



\$310,900
MLS 6762938 Residential
13400 State Highway 18
Brainerd MN 56401