



MLS 6763100 Lake Home

\$1,100,000

3,140 sq ft
4 bedrooms
4 baths

37739 Pickerel Trail
Crosslake MN 56442

Waterfront: Goodrich

Status: Active

Description:

Escape to your dream retreat with this stunning custom-built log home, nestled on nearly 3 acres of serene, wooded privacy. Warm up by the cozy stone fireplace in the inviting main living area, where expansive windows frame breathtaking views of the surrounding nature. The main floor boasts a spacious bedroom, and a full bathroom featuring a luxurious clawfoot tub. Upstairs, the private loft primary suite offers a tranquil escape. Follow the wooded path to 110' of hard sand shoreline, perfect for waterfront recreation and relaxation. Ample storage awaits in the attached 26'x28' garage and the detached 30'x40' garage. Plus an area is already cleared, ready for your expansion ideas! Embrace rustic elegance and modern comfort in this one-of-a-kind sanctuary!

Additional Details:

Year Built	2007
Lot Acres	2.93
Lot Dimensions	140x342x113x408x1reg
Garage Stalls	4
School District	182
Taxes	\$4,163
Taxes with Assessments	\$4,188
Tax Year	2025

Additional Features:

Fuel: Natural Gas **Heat:** Boiler, Forced Air, Fireplace(s), Radiant Floor

Driving Directions:

From Crosslake intersection of #3 and #66 go N. on #3, right on #37, left on #36, left on Bonnie Lakes Rd., stay right on Bonnie Lakes Rd at the "Y", to right on Pickerel Trail to 37739.



Listed By:
RE/MAX Results - Nisswa

Affinity Real Estate Inc. participates in the Regional Multiple Listing Service of Minnesota, Inc Broker Reciprocity (sm) program, allowing us to display other broker's listings on our website. All properties are subject to prior sale, change or withdrawal.



Call Affinity Real Estate

218-237-3333

info@affinityrealestate.com



Affinity Real Estate - 600 Park Avenue South - Park Rapids MN 56470



website: www.AffinityRealEstate.com | email: info@affinityrealestate.com | office: 218-237-3333 | fax: 218-237-3377

Affinity
REAL ESTATE INC

\$1,100,000

MLS 6763100 Lake Home
37739 Pickerel Trail
Crosslake MN 56442



website: www.AffinityRealEstate.com | email: info@affinityrealestate.com | office: 218-237-3333 | fax: 218-237-3377

Affinity
REAL ESTATE INC

\$1,100,000

MLS 6763100 Lake Home
37739 Pickerel Trail
Crosslake MN 56442



website: www.AffinityRealEstate.com | email: info@affinityrealestate.com | office: 218-237-3333 | fax: 218-237-3377

Affinity
REAL ESTATE INC

\$1,100,000
MLS 6763100 Lake Home
37739 Pickerel Trail
Crosslake MN 56442



website: www.AffinityRealEstate.com | email: info@affinityrealestate.com | office: 218-237-3333 | fax: 218-237-3377

Affinity
REAL ESTATE INC

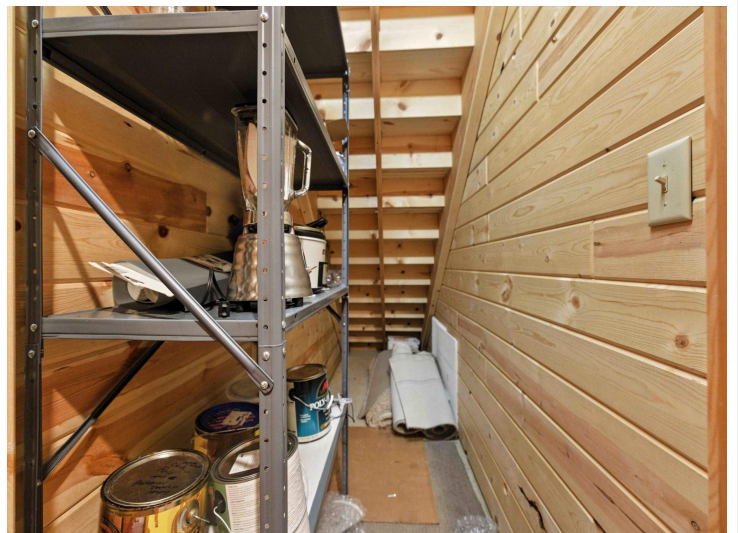
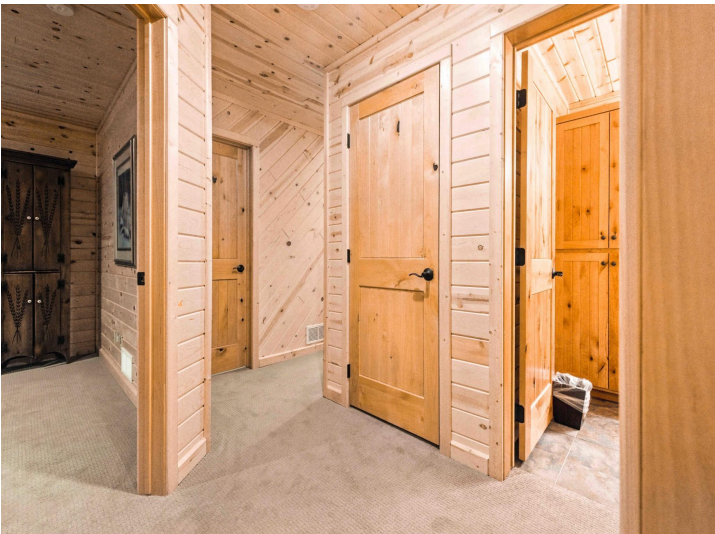
\$1,100,000
MLS 6763100 Lake Home
37739 Pickerel Trail
Crosslake MN 56442



website: www.AffinityRealEstate.com | email: info@affinityrealestate.com | office: 218-237-3333 | fax: 218-237-3377



\$1,100,000
 MLS 6763100 Lake Home
 37739 Pickerel Trail
 Crosslake MN 56442



website: www.AffinityRealEstate.com | email: info@affinityrealestate.com | office: 218-237-3333 | fax: 218-237-3377



\$1,100,000
MLS 6763100 Lake Home
37739 Pickerel Trail
Crosslake MN 56442



website: www.AffinityRealEstate.com | email: info@affinityrealestate.com | office: 218-237-3333 | fax: 218-237-3377

Affinity
REAL ESTATE INC

\$1,100,000

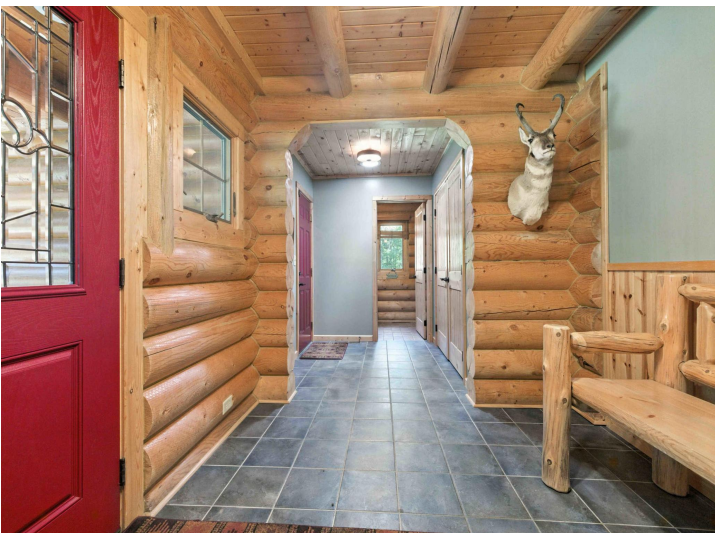
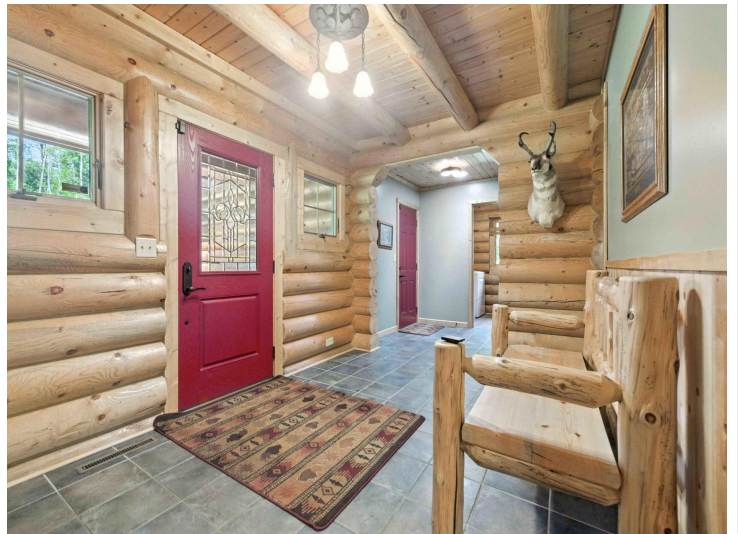
MLS 6763100 Lake Home
37739 Pickerel Trail
Crosslake MN 56442



website: www.AffinityRealEstate.com | email: info@affinityrealestate.com | office: 218-237-3333 | fax: 218-237-3377

Affinity
REAL ESTATE INC

\$1,100,000
MLS 6763100 Lake Home
37739 Pickerel Trail
Crosslake MN 56442



website: www.AffinityRealEstate.com | email: info@affinityrealestate.com | office: 218-237-3333 | fax: 218-237-3377



\$1,100,000
 MLS 6763100 Lake Home
 37739 Pickerel Trail
 Crosslake MN 56442



website: www.AffinityRealEstate.com | email: info@affinityrealestate.com | office: 218-237-3333 | fax: 218-237-3377



\$1,100,000
 MLS 6763100 Lake Home
 37739 Pickerel Trail
 Crosslake MN 56442



website: www.AffinityRealEstate.com | email: info@affinityrealestate.com | office: 218-237-3333 | fax: 218-237-3377



\$1,100,000

MLS 6763100 Lake Home
37739 Pickerel Trail
Crosslake MN 56442



website: www.AffinityRealEstate.com | email: info@affinityrealestate.com | office: 218-237-3333 | fax: 218-237-3377



\$1,100,000

MLS 6763100 Lake Home
37739 Pickerel Trail
Crosslake MN 56442