



MLS 6763563 Lake Land

\$379,000

Description:

Remote lake wilderness retreat — 68 Acres with island, trails & total seclusion. Welcome to a nature lover's paradise—an extraordinary, once-in-a-lifetime opportunity to own a legacy property on remote, undeveloped Lewis Lake. Just minutes from the lakes area towns of Outing and Emily, yet a world apart in solitude and wild beauty, this 68-acre tract offers unmatched privacy, pristine forest, and your very own island blanketed in towering old-growth red pines. With much of the lakefront held in township land, you'll be the largest private landowner on this quiet, 60-acre lake and wetland — with no cabins and complete tranquility. Frequent visits from trumpeter and tundra swans, deer, and other wildlife make this a true sanctuary for both animals and humans alike. Build your dream home or cabin on your choice of sites nestled among mature pines and mixed hardwoods. Wander the moss-covered trails, cross hand-built bridges, and discover scenic viewpoints and picnic spots designed for peaceful family gatherings. Whether you're into hiking, hunting, birdwatching, biking, ATVing, snowmobiling, cross-country skiing, or snowshoeing, this land has it all. The back 40 acres border township land on 2.5 sides for added privacy and elbow room. Even better, the property connects directly to public trails into Land O' Lakes State Forest and the Moose River trail system—your personal gateway to endless outdoor adventure. Property adjoins a township road with power at the road. Lakefront lots across the road on Lake Roosevelt also available for sale. This is more than just a property—it's a private wilderness retreat where memories are made and nature is your nearest neighbor.

Additional Details:

Lot Acres	67.7
Lot Dimensions	See Aerial Map
School District	118
Taxes	\$838
Taxes with Assessments	\$838
Tax Year	2025

Additional Features:

Driving Directions:

From Emily take State Highway 6 North to Outing and take a right on County Road 156 and follow to Sunset Hill Road NE and follow to the lakefront for signs.



Edina Realty, Inc.

Affinity Real Estate Inc. participates in the Regional Multiple Listing Service of Minnesota, Inc Broker Reciprocity (sm) program, allowing us to display other broker's listings on our website. All properties are subject to prior sale, change or withdrawal.



Call Affinity Real Estate

218-237-3333

info@affinityrealestate.com



Affinity Real Estate - 600 Park Avenue South - Park Rapids MN 56470



website: www.AffinityRealEstate.com | email: info@affinityrealestate.com | office: 218-237-3333 | fax: 218-237-3377



\$379,000

MLS 6763563 Lake Land
TBD Sunset Hill Road NE
Outing MN 56662



website: www.AffinityRealEstate.com | email: info@affinityrealestate.com | office: 218-237-3333 | fax: 218-237-3377



\$379,000

MLS 6763563 Lake Land
TBD Sunset Hill Road NE
Outing MN 56662



website: www.AffinityRealEstate.com | email: info@affinityrealestate.com | office: 218-237-3333 | fax: 218-237-3377



\$379,000

MLS 6763563 Lake Land
TBD Sunset Hill Road NE
Outing MN 56662



website: www.AffinityRealEstate.com | email: info@affinityrealestate.com | office: 218-237-3333 | fax: 218-237-3377



\$379,000

MLS 6763563 Lake Land
TBD Sunset Hill Road NE
Outing MN 56662



website: www.AffinityRealEstate.com | email: info@affinityrealestate.com | office: 218-237-3333 | fax: 218-237-3377



\$379,000

MLS 6763563 Lake Land
TBD Sunset Hill Road NE
Outing MN 56662

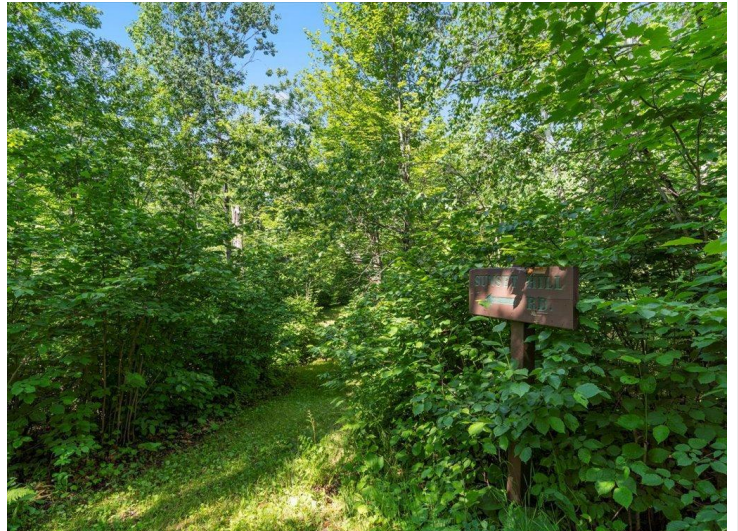


website: www.AffinityRealEstate.com | email: info@affinityrealestate.com | office: 218-237-3333 | fax: 218-237-3377



\$379,000

MLS 6763563 Lake Land
TBD Sunset Hill Road NE
Outing MN 56662

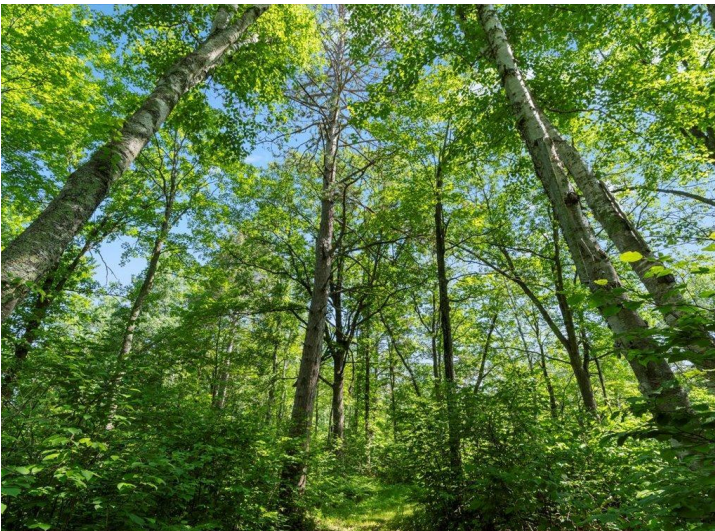
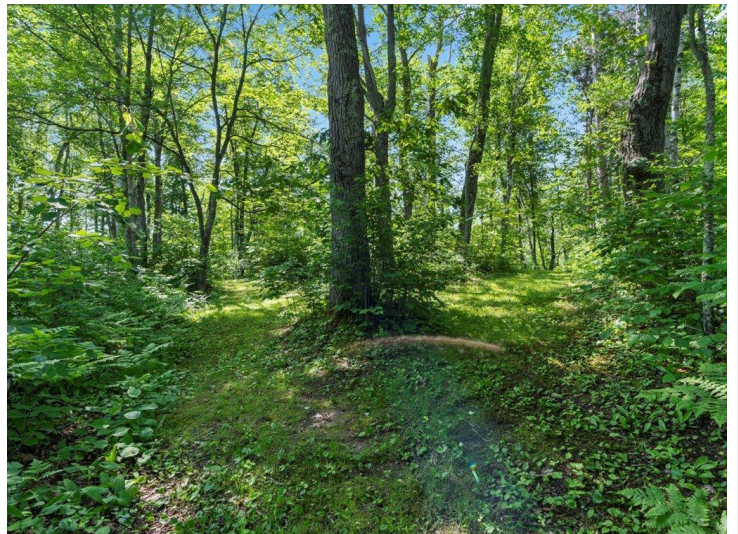
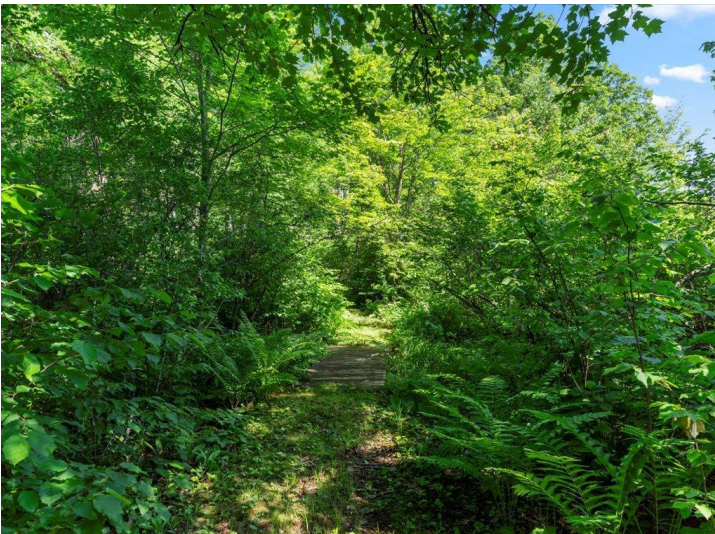


website: www.AffinityRealEstate.com | email: info@affinityrealestate.com | office: 218-237-3333 | fax: 218-237-3377



\$379,000

MLS 6763563 Lake Land
TBD Sunset Hill Road NE
Outing MN 56662



website: www.AffinityRealEstate.com | email: info@affinityrealestate.com | office: 218-237-3333 | fax: 218-237-3377



\$379,000

MLS 6763563 Lake Land
TBD Sunset Hill Road NE
Outing MN 56662

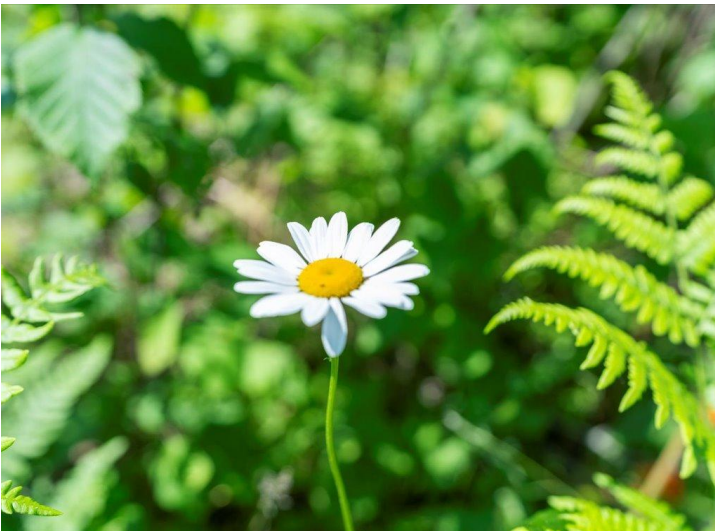


website: www.AffinityRealEstate.com | email: info@affinityrealestate.com | office: 218-237-3333 | fax: 218-237-3377



\$379,000

MLS 6763563 Lake Land
TBD Sunset Hill Road NE
Outing MN 56662

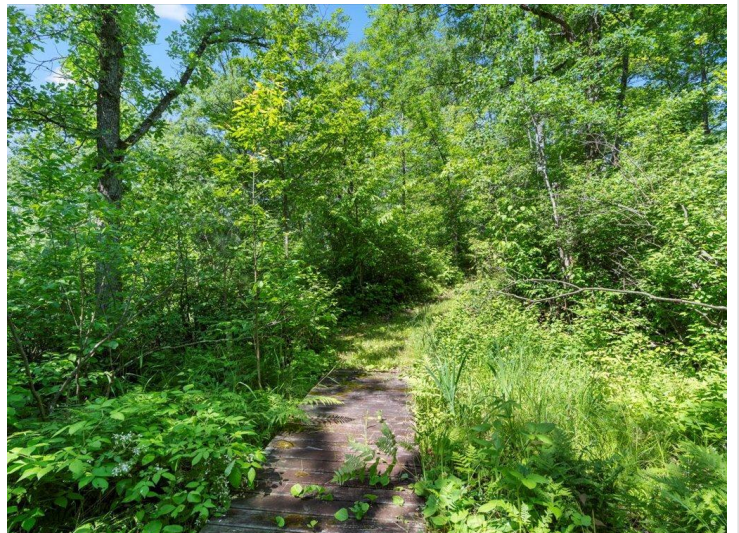


website: www.AffinityRealEstate.com | email: info@affinityrealestate.com | office: 218-237-3333 | fax: 218-237-3377



\$379,000

MLS 6763563 Lake Land
TBD Sunset Hill Road NE
Outing MN 56662

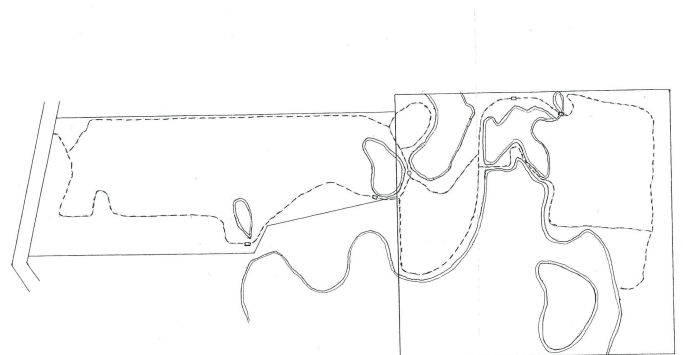
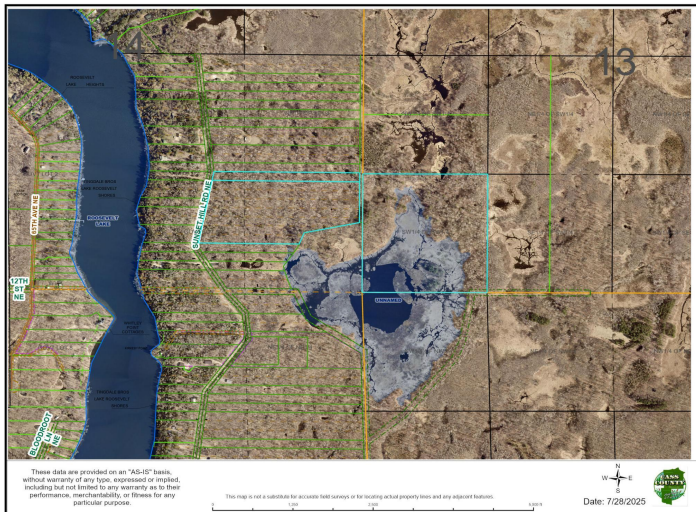


website: www.AffinityRealEstate.com | email: info@affinityrealestate.com | office: 218-237-3333 | fax: 218-237-3377



\$379,000

MLS 6763563 Lake Land
TBD Sunset Hill Road NE
Outing MN 56662



website: www.AffinityRealEstate.com | email: info@affinityrealestate.com | office: 218-237-3333 | fax: 218-237-3377



\$379,000
 MLS 6763563 Lake Land
 TBD Sunset Hill Road NE
 Outing MN 56662